

Software Version : EasyBuilder Pro V6.03.02.463

Corrections

EasyBuilder Pro

1. [cMT] Fixed comparison logic issue of ">=" in macro.
2. [iE/XE/eMT/mTV] Fixed an issue where the setting of system register LB-12089 is not retained after rebooting HMI.
3. [Serial Pass-Through] Updated the virtual COM driver. On Win10 computers, the driver can work properly after installation without the need for changing BIOS setting

Drivers

1.	[MODBUS RTU, RTU over TCP] [MODBUS RTU Zero-based Addressing] [MODBUS Hex Addressing] [ELSIST MODBUS RTU] [CD MODBUS RTU]	Fixed an issue where HMI may stop operating when setting 0x register ON. This issue only affects versions ranging from 6.03.02.349 to 6.03.02.460.
2.	[Mitsubishi A2A/A2U/A2AS/A2USH]	Added A2USH device type.
3.	[MICRO TREND UTREND UTC SERIES]	Added new driver.
4.	[LS XBM/XBC/XGK CPU DIRECT] [LS XGK Cnet] [LS XBM/XBC FEnet (Ethernet)]	Expanded address range.

Software Version : EasyBuilder Pro V6.03.02.393

Corrections

EasyBuilder Pro

1. [EBPro] Fixed an issue where compilation may fail when the project contains an erroneous GIF file.
2. [EBPro] Disabled monopoly setting of the default windows in project templates.
3. [EBPro] Fixed an issue where certain project file settings may not be saved correctly.
4. Fixed an issue where system registers that control the Device no Response window are ineffective.
5. [cMT] Fixed an issue where connection cannot be established successfully due to delayed reply to ALTER command by database server when using MariaDB 5.5.
6. [cMT] Fixed an issue where “already installed” message is returned by error when re-installing a printer driver after an unsuccessful attempt.
7. Fixed an issue where macro functions StringInsert and FLOAT2ASCII do not generate proper results.
8. Fixed an issue where certain calculations in macro may not be carried out correctly.
9. [EasyConverter] Fixed potential DLL security vulnerabilities.
10. Fixed an issue where connection to certain Ethernet type PLC by on-line simulation does not work since second try.

Drivers

1. [Modbus] Fixed an issue where setting 0x /1x address range leads to incorrect, shifted data read.
2. [OMRON EtherNet/IP (NJ/NX Series)] Fixed connection issue that occurs after disconnection.
3. [MODBUS] Added 3x_Qword, 4x_Qword addresses for 64-bit application.
4. [BACnet/IP] Fixed an issue where data cannot be accessed after a period of time under communication using COV mode.
5. [Schneider SoMachine M Series (Ethernet)] Added support for communication with M241 firmware v5 or later (PLC software used: Machine Expert).
6. [CODESYS V2 (Symbolic Addressing)] Added support for bit access of Word data

type.

7. [Delta AS300 MODBUS RTU/ASCII][Delta AS300 MODBUS TCP/IP] Added L and L_Bit addresses.
8. [Schneider MODBUS TCP/IP] Added %TM_V, %TM_P, %TM_Q, and %X addresses.
9. Siemens S7-1200/1500 Series: Added support for importing .ap15_1, .ap16 files. (TIA Portal V15.1, V16)
10. [Beckhoff TwinCAT PLC – Free Tag Names (Ethernet)] Fixed an issue where compilation error may occur due to incorrect parsing of address tags.
11. [Beckhoff TwinCAT PLC – Free Tag Names (Ethernet)] Fixed an issue where incorrect value may be obtained from address tags using Modbus TCP/IP Gateway.
12. [Beckhoff TwinCAT PLC – Free Tag Names (Ethernet)] Fixed an issue where String arrays cannot be read correctly.
13. [XINJE XD Series (Ethernet)] Added new driver.
14. [CODESYS V3 (Ethernet)] Fixed an issue where data types: LINT, ULINT, LREAL cannot be accessed properly.
15. [EMERSON ROC800 Series – Free Tag Names] Fixed get tag and read issues with bit address tags.
16. [KEYENCE KV-L20V/700/1000/3000/5000/7500/8000/Nano Series] [KEYENCE KV-L20V/700/1000/3000/5000/7500/8000/Nano Series (Ethernet)] Expanded R 、 R_word 、 FM 、 FM_Bit address ranges.

Software Version : EasyBuilder Pro V6.03.02.294

Corrections

EasyBuilder Pro

1. **[Macro]** Fixed an issue where RAND function does not output properly.
2. Fixed an issue where preloading fonts can make the program unable to start properly.
3. Fixed an issue where Modbus Server cannot read PLC data correctly.
4. Fixed an issue where device IP related system registers are incorrect when using Modbus Server (Ethernet interface).
5. (iE/XE/eMT) **[Event Display]** Fixed an issue where the incorrect elapsed time is displayed.
6. Fixed an issue where minor position adjustment of multiple selected objects using the arrow keys is impossible.
7. **[Data Transfer (Per-page)]** Fixed an issue where “0 is short of space” message shows when opening the settings window of this object.
8. **[Macro]** Fixed a number of compilation issues.

cMT Viewer

1. Fixed an issue where cMT viewer cannot connect to the device whose project file was compiled and downloaded using an earlier version of EasyBuilder Pro.

Software Version: EasyBuilder Pro V6.03.02.257

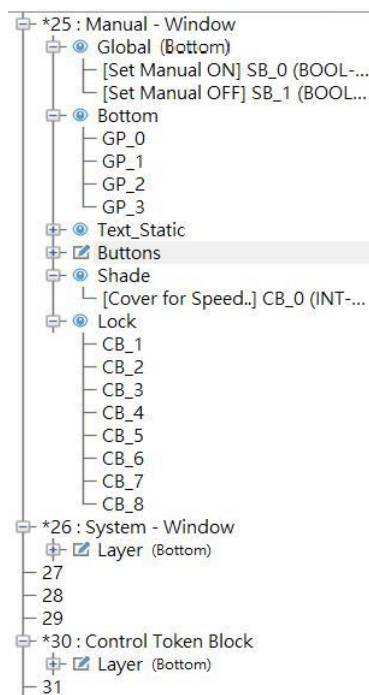
Supported Models

1. Added support for cMT-CTRL01.

New Features

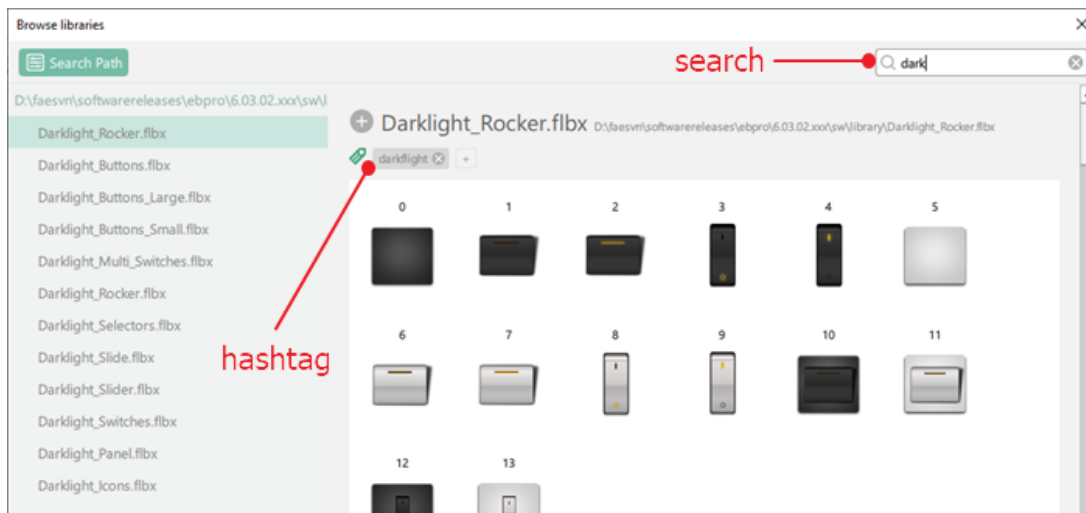
EasyBuilder Pro

1. Added support window layers, a way of organizing objects in a window. Having added layers to a window, objects can be placed within different layers as appropriate. Objects in selected layers can be displayed while those in other layers are invisible, which shall greatly facilitates the screen design process.



Window 25 in the screenshot above has six layers: Global, Bottom, Text_Static, Buttons, Shade, and Lock.

2. Expanded system picture library. New libraries include generic icons across multiple themes, industrial buttons and switches, P&ID symbols.....etc. See appendix 1 in this document for the new icons.
3. Added "Apply" button to the object property settings window. This button allows saving of the settings without having to close the window.
4. Added support for search function and the use of hashtag for the picture libraries in the Browse Libraries interface.

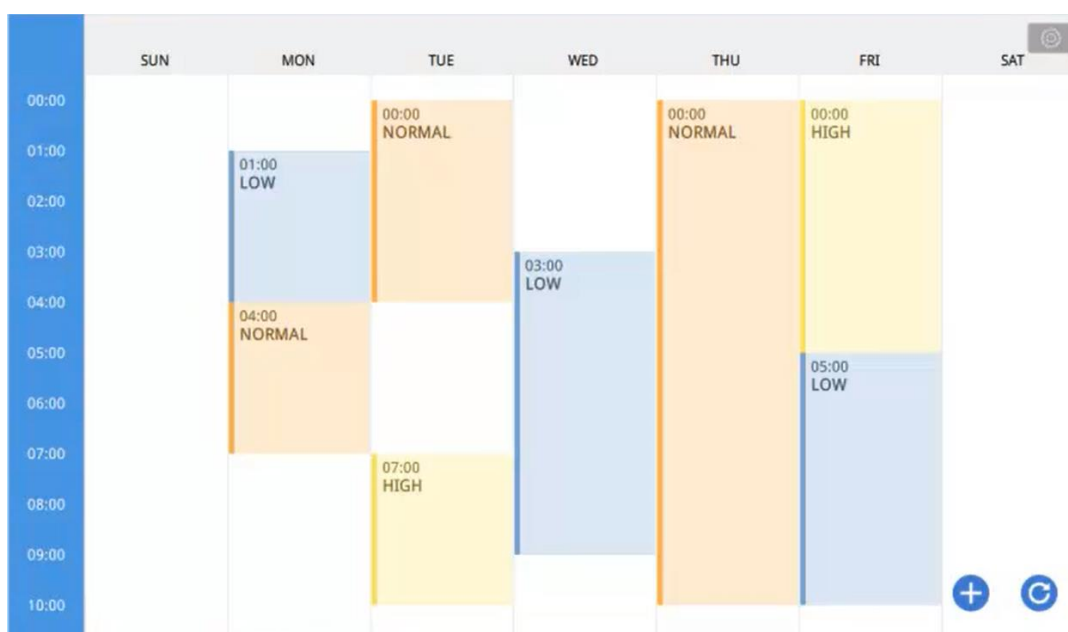


5. Added [Duplicate to Every State], [Duplicate to Every Language], and [Duplicate to Every State and Language] shortcut buttons into text settings in Home tab which can be used to duplicate the current text settings of the selected object to its other states or languages.
6. Moved settings relating to Recipe Database to the Data / History tab.

cMT Series

All features listed in this section is available exclusively for cMT series only.

5. Added support for 64-bit data type.
6. Added **[BACnet Schedule]** object. This feature is only applicable when using the **[BACnet/IP]** driver and it helps visualize and access schedule data in BACnet controller with a graphical UI.

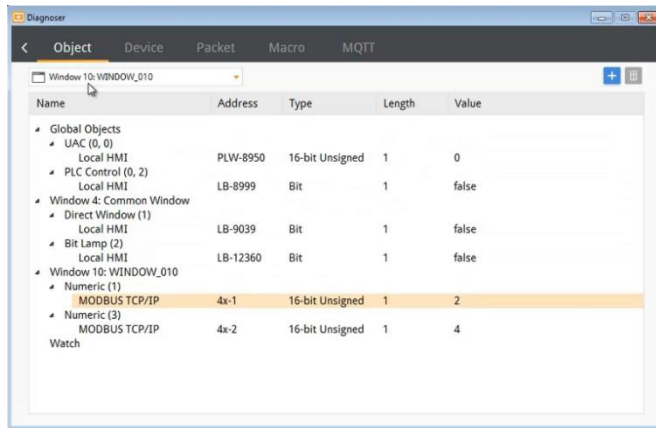


BACnet Schedule object as seen on HMI screen

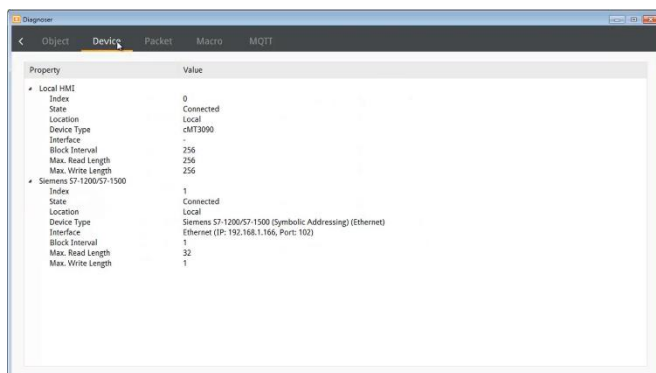
7. **[Recipe View]** Made whether or not to display specific columns configurable.
8. **[MQTT]** Added support for Google Cloud IoT Core.
9. **[MQTT]** Added support for using nested structure for Topic Subscriber under JSON (Advanced) mode.
10. **[MQTT]** Added support for automatically building data structure using JSON template under JSON (Advanced) mode.
11. **[Backup (per page)] [Backup (global)]** Added support for using SQL Query as data source.
12. **[Picture Viewer]** Added support for playing GIF-format images.
13. **[Option List]** Added row height setting.
14. **[Alarm Bar] [Alarm Display] [Event Display] [Event Bar Chart]** Added dynamic category range setting.
15. **[Action Trigger][Combo Button]** Added [Write constant string] option for Set Word action.
16. **[Action Trigger][Combo Button]** Added [File Transfer (FTP)] action.
17. **[Function key]** Added line feed option for keyboard input.
18. **[File Browser]** Added [Select] command.
19. **[System Parameter Setting]** Added [Trigger release actions anyway if touch moves out of the button] option.
20. Added system register LB-12665 : open USB/SD card download/upload dialog.
21. Added the following system registers relating to Wi-Fi hotspot feature:
 - LB-12666 : Disable/enable Wi-Fi Hotspot
 - LB-12667 : Refresh Wi-Fi Hotspot setting
 - LW-12006 (16 words) : Wi-Fi Hotspot SSID
 - LW-12022 (32 words) : Wi-Fi Hotspot password

Utility Manager

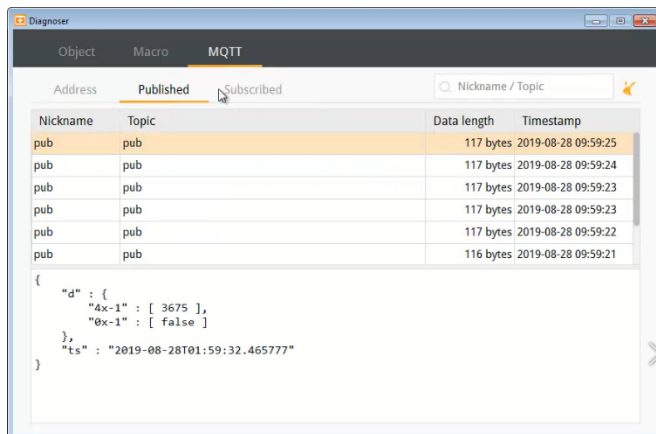
1. Added cMT Diagnoser. This tool can be used to access the data of HMI (cMT Series models, including Gateway models) and the PLC it's connected to, the communication status and details between HMI and PLC, and the communication status between HMI and MQTT Server.



View data



View communication status with PLC



View communication status with MQTT server.

Drivers

- Added support for 64-bit data type for the following PLC series:

[MODBUS]

[Rockwell CompactLogix/ControlLogix/Micro850]

[OMRON EtherNet/IP NJ/NX]

[OPTO22 CONT Protocol]

[EMERSON ControlWave]

[CODESYS V2/V3]

[Schneider SoMachine M]

[Beckhoff TwinCAT]

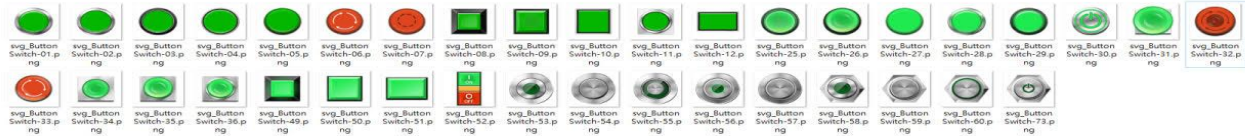
As noted above, 64-bit data type is available only for cMT series. It is not available for iE, iP, eMT, XE and mTV series.

Appendix 1: EasyBuilder Pro 6.03.02 new system picture libraries

Database Icon name	Alarm Icon name	Arrow Icon name	Communication Icon name	Link / Share Icon name	Cloud Icon name	Settings Icon name	File / Folder Icon name	Shape Icon name	Logistics Icon name
1 Stack	Error	AngleUp	edit	Multiple	DownloadFromCloud	Settings	Document	Round	Support
2 Stack Recovery	Stop	AngleDown	comment-dots	Single	UploadToCloud	Setting Error	View	Oval	Feedback
3 Datasheet	Shutdown	AngleLeft	comments	CloudShare	SyncCloud	Setting Issue	Library	Triangle	Destination
4 Data Backup	Radio	AngleRight	wifi	CloudSearch	UploadSuccess	Setting Caution	Archive	Isosceles triangle	Geolocation
5 Data Import	Non-Displayable	AngleDoubleUp	paper-plane	Archivessue	UploadError	Setting Instrument	File	Square	Compass
6 Data Export	Lock	AngleDoubleDown	network-wired	Firewall	SearchCloud	Setting Complete	File Archive	Rectangle	Calendar
7 Data Sharing	Unlock	AngleDoubleLeft	bell-slash	GlobalServer	CloudSecurity	Tool Box	File Audio	Pentagon	AirFreight
8 File	Danger	AngleDoubleRight	bell	Contribution	CloudComputing	Slider Left	File Code	Hexagon	CargoBarge
9 Security	Bell	Up	envelope	Batch	CloudHosting 1	Slider Right	File Excel	Octagon	CargoTrain
10 Storage	Light	Down	envelope-open	PeerToPeer	CloudHosting 2	Time Setting	File Txt	Star	WorldwideShipping
11 Concurrency Control	Danger_Flamme	Left	news	EthernetPort	CloudServices	Date Setting	File Image	Decagram	Delivery
12 Sync	warning_Poison	Right	users	EthernetCable	CloudDrive	User Setting	File Pdf	Icosagram	FastDelivery
13 MySQL	Question/issue	CircleUp	user group1	Group	CloudNetwork	Image Setting	File Powerpoint	Variation	Delivered
14 SQL	caution	CircleDown	user group2	Seam	CloudStorage	Windows Setting	File Video	Shield	DeliverycanCeled
15 Microsoft Azure	Activation key	CircleLeft	user group3	Dispersion	LinkCopy	File Setting	File Word	Cross mark	Container
16 IBM Bluemix	Electric Shock	CircleRight	rss feed	Set	LinkShare1	Transparency Setting	Folder	Check mark	Checklist
17 Amazon Web Services	Breakdown	SquareUp	router	Sharing	LinkShare2	Archive File Setting	Folder Open	Circle mark	Weight
18 Online Spreadsheets	Fix	SquareDown	device connection1	Upload	Delete	Transfer	Save	Triangle mark	Dimension
19 Create Database	Low Battery	SquareLeft	device connection2	Download	Lock	Collection	Sticky Note	Square mark	TimeTracking
20 Database User	Biohazard	SquareRight	device connection3	External	CloudSetting	Divergence	Create Document	Water drop	Barcode
21 Permission Management	Chemical	FromTop	device connection4	Internal	OtherSetting	Sync Setting	Upload Document	Moon	DeliverySchedule
22 Version Control	Pinch Point_Hand	FromBottom	device connection5	Pin	BigData	Mixer	Classification	Cloud	Tracking
23 Quantization	Explosion	FromLeft	device connection6	ArchiveFile	CloudConnection	Code Setting	Trash Folder	Sun	Parcelin
24 System Automation	Gas	FromRight	cloud upload	Exchange	GlobalNetwork	Encrypt	Upload Folder	Bookmark	ParcelOut
25 Search Database	Geothermal	ToTop	cloud download	Link	SiteRecovery	Folder Setting	Block Folder	Heart	Breakage
26 Database Filter	Heavy	ToBottom	wifi cloud	Unlink	ContentDeliveryNetwork	Filter	Lock Folder	Spade	ShelfCapacity
27 Database Admin	LaserHazard	ToLeft	wifi HMI	Attach	SyncingWith Mobile	Comment	Unlock Folder	Club	Warehouse
28 Local Network	Magnetism	ToRight	wifi device	Information	CloudAlert	More Tools	Sync Folder	Diamond	WarehouseManagement
29 Server Error	Radioactive	RotateLeft		@		Find Tools	Alert Folder	Hand	ContainerCrane
30 Scheduled Maintenance	Snow	RotateRight		Bluetooth		Custom Tool bar	Corrupted file	Pentagon_round corner	Discrepancy
31	UV	LoopRotation		Connecting		Crop Marks	Approve file	Square_round corner	DistributionCenter
32	Alarm	LoopRotation2		Cycle		Index	Keypad	Triangle_round corner	OverflowShip ment
33	Bell	TurnUP		Part		Help Center	Add file	Rectangle_round corner	
34	Timer	TurnDown		Proportion		Custom Color	Move Out	Flower	
35	Corrosive_Hand	TurnLeft		Junction		Tag	Move In	Parallelogram	
36	High Noise Area	TurnRight		JunctionLock		Internet Setting	Find Files	Trapezoid	
37		4WayExpand					Favourite		
38		4WayCompress					Data Transmission		
39		2WayExpand					File Hyperlink		
40		2WayCompress					Basic Settings		
41		2WayArrowH					Privacy Settings		
42		2WayArrowV					Folder Info		
43		DoubleArrowH					File Info		
44		DoubleArrowV					Create Shortcuts		
45		TriangleUP					Access Right		
46		TriangleDown					Shared Folder		
47		TriangleLeft					Access Failure Error		
48		TriangleRight					Unknown File		

Audio / video icon name	SD Card / USB icon name	Upload / Download icon name	Credential / Password icon name	Keyboard / call icon icon name	Barcode icon name	QR Code icon name	Address / Edit icon name	Email icon name	Notification icon name
1 Play	SDCardBlank	UploadArrow	Portrait	Keyboard	Barcode1	QRCode	AddressLabel	Mail	Dot
2 Stop	CapacityGB	UploadArrow	PortraitRecogni	KeyboardEipa	Barcode2	Focus	AddressTagLi	OpenMail	WindowsNotif
3 Pause	NameSD	UploadBox	PortraitRecogni	KeyboardCola	Barcode3	Confirm	AddressType	Letter	RectangularD
4 Backward	SDCardWiFi	DatabaseUploa	PortraitRecogni	WifiKeyboard	BarcodeScan	Error	AddressType	Reply	SquareDialog
5 FastBackwar	SDCardLock	ServerUpload	PortraitRecogni	KeypadLock	BarcodeScan	Unknown	AddressForm	ReplyAll	OvalDialogBo
6 Forward	SDCardDropO	ProjectUpload	IdentityCredenti	NumericKeypa	BarcodeScan	Restart	UserDefinedT	Forward	CircularDialog
7 FastForward	SDCardUnread	PacketUpload	IdentityConfir	NumericKeypa	BarcodePrint	Search	UserDefinedT	Send	WordDialogB
8 StepBackwar	SDCardRead	FolderUpload	IdentityConfir	NumericKeypa	ScanUnsucce	Scanning	SystemTags	SendAll	IssueDialogB
9 StepForward	SDCardDisabl	FileUpload	PasswordInput	Delete	ScanSuccee	ScanBox	AddAddress	Receive	StopDialogBo
10 Restarted	SDCardWarnin	PictureUpload	PasswordCerti	Enter	NoThisBarco	Scanner	AddressTagS	SendAndRece	CautionDialog
11 Undo	SDCardSearch	CloudUpload	PasswordSucce	Shift	Search	PackageQRCo	Classification	CancelSendA	BellDot
12 Redo	SDCardProtect	HMIUpload	PasswordUnsuc	Windows	BarcodeSetti	CloudQRCod	Search	MailConfirm	Megaphone
13 Repeat	External SD	UploadSetting	PasswordProtec	Numericinput	KeyInNumber	MobileScanni	Delete	MailDeletion	MobileText
14 Random	SDCardFormat	UploadRun	Password	Input	CountingList	FileScanning	Export CSV	MailSharing	GroupNotifica
15 Expand	MicroSDCard	Uploadsuccessful	FingerprintReco	SquareFoot	Report	ComputerScanni	Import CSV	MailEncryption	CalendarDot
16 Compress	USBIconV	UploadStop	FingerprintUnsu	Square	PIN		Export EXCEL	Spam	FAQ
17 Compress	USBIconH	UploadTimeOut	FingerprintUnsu	OneX	L/N		Import EXCEL	Reorganize	DataReportin
18 Expand	USBdisk	UploadUnsucce	RecognitionIris	IsDividedBy	ID/C		Address	AddMail	HMIReporting
19 VideoFile	USBdisk2	DownloadArrow	RecognitionIris	IsMultipliedBy	BOM		Macro Subroutine	Edit	PLCReporting
20 AudioFile	USBWiFi Dongle	DownloadArrow	RecognitionIris	Minus	PO		ReadWriteCo	ShippingBack	WaterStage
21 Video	USBLock	DownloadBox	ComputerPassw	Plus	MO		ObjectInformat	AttachmentLeft	Temperature
22 VideoClose	USBDropOut	DatabaseDown	HMIPasswordCr	Arrowkeypad	QTY		HMI Address	Search	Pressure
23 Microphone	USBSearch	ServerDownloa	MobilePassword	ArrowUp	NG		PLC Address	LetterMovedTo	Equipment
24 MicrophoneMute	USBProtected	ProjectDownloa	DatabasePassw	ArrowDown	LRR		Source Address	MarkedUnread	Manipulators
25 VolumeUp	USBHardware	PacketDownloa	ManualPassword	ArrowLeft	RMA		Destination Address	Annex	PilotLamp
26 VolumeDown	DropOut	FolderDownloa	GraphicRecogni	ArrowRight			IP Address	Annex	Maintenance
27 VolumeOff	USBCable	FileDownload	Key	StarKey			Address Mapping	At	Occupied
28 VolumeMute	USBConnectio	PictureDownloa	KeyCredential	FoundKey			Easy Address	Inbox	Warning
29 WebCam	USBDisable	CloudDownloa	Password	Microphone			AddressValue	Seal	Event
30 WebCamClose	USBWarning	HMIDownload	UnlockedSucce	MicrophoneMu				Trash	Broadcast
31 Headphones	USBProhibited	DownloadSetti	SuccessfulCertif	Video				Tag	TrafficVolume
32 Music	USB 3.0	DownloadRun	AuthenticationF	VideoClose					InternetSpeed
33 Film	USBMicro	Downloadsucces							NotConnecte
34	USBMini	DownloadStop							FullCapacity
35	USBTypeA	DownloadTime							Cancel
36		DownloadUnsu							Subscription
37		CloudUploadD							
38		UploadDownloa							
39									
40									
41									
42									
43									
44									
45									
46									
47									
48									

Button Switch



Selector Switch



Toggle Switch



Key Lock Switch



DIP Switch



Slide Switch



Rocker Switch



Magnetic Switch



Nameplates



Valve

