

## Software Version : EasyBuilder Pro V6.04.01.705

### Corrections

#### EasyBuilder Pro

1. Fixed an issue where alignment tool shortcuts (Vertical / Horizontal center window) do not work properly.
2. Fixed an issue where touch gestures cannot be configured properly.
3. (cMT) Fixed an issue where the displayed texts are not aligned as configured.
4. (cMT) Fixed an issue where Set Word's [Before writing] notification setting is ineffective.

#### EasyConverter

1. (cMT) Fixed an issue where confirmation records of event log files may be interpreted incorrectly.

### Drivers

- |    |                                      |   |
|----|--------------------------------------|---|
| 1. | [LS XBM/XBC Cnet]                    | Fixed communication issues related to RW, RW_Bit. |
| 2. | [Schneider Powerlogic Modbus TCP/IP] | Added driver.                                     |

## Software Version : EasyBuilder Pro V6.04.01.673

### Corrections

#### EasyBuilder Pro

1. (cMT Gateway) Added support for Action Trigger object. (Supports only the functions suitable for Gateway.)
2. (iE, XE, eMT, mTV) Fixed an issue where objects in momentary mode do not work properly.
3. (iE, XE, eMT, mTV) Fixed an issue where the channels are not displayed as configured in Trend Display object.
4. Fixed an issue where the Video Input object may be displayed at an incorrect position if its dynamic RTSP URL is enabled.
5. Fixed an issue where index registers do not work properly for certain objects.
6. Fixed an issue where opening, editing, and decompiling certain project files may result in EasyBuidler Pro crash.
7. Fixed an issue where the local address cannot be used for Energy Demand Setting.

### Drivers

3.	[Delta AS300 MODBUS RTU/ASCII]	Optimized communication efficiency by adopting multi-read mechanism.
4.	[OMRON EtherNet/IP (NJ/NX Series)]	Added support for accessing the String under Data Type.
5.	[Siemens S7-1200/S7-1500 (Absolute Addressing) (Ethernet)]	Added support for 64bit addresses.
6.	[CoDeSys V2 Symbolic Addressing (Ethernet)] [ProConOS] [Beckhoff TwinCAT PLC (Ethernet) Free Tag Names] [Bosch Rexroth SIS (Symbolic Addressing)] [IEC61850 MMS Client] [Bosch Rexroth IndraControl – Free Tag Names (Ethernet)]	Fixed an issue where index registers do not work properly when being used by certain address types.
7.	[Panasonic FP (Ethernet)]	Fixed communication issues with devices of station

	number > 10.
<b>8.</b> [OMRON EtherNet/IP (NJ/NX Series)]	Fixed an issue where BOOL array may not be correctly read.
<b>9.</b> [OMRON CS/CJ/CP]	Added communication error handling protocol.
<b>10.</b> [OPC UA Client]	Fixed an issue where dynamically changing IP address and connection port during runtime is ineffective.
<b>11.</b> [CODESYS V3 (Ethernet)]	Fixed some tag import issues.

## Software Version : EasyBuilder Pro V6.04.01.584

### Supported Models

Added cMT-FHDX

### Corrections

#### EasyBuilder Pro

1. [cMT] Fixed an issue where multiple Backup (Per-page) objects are not all triggered if they are set to be triggered by the same bit.
2. [cMT] Fixed incorrect channel visibility behavior of Trend Display object.
3. Fixed an issue where the search path for a picture library is interpreted incorrectly when it contains space.
4. [cMT-FHD] Fixed an issue where multi-touch cannot be detected.
5. [non cMT] Fixed an issue where historical data may not be immediately synchronized to the external device after triggering LB-9034.
6. Added an EA2.0 and CODESYS root certificate renewal tool for resolving a server connection issue in Utility Manager.

### Drivers

1.	[Beckhoff TwinCAT]	Added support for TIME, DATE, DATE_AND_TIME(DT), TIME_OF_DAY(TOD) data types.
2.	[Schneider SoMachine M Series (Ethernet)]	Fixed an issue where String data type is not correctly written.
3.	[MODBUS RTU]	Fixed an issue where the values in 0x/1x address are not correctly read when the configured address range contains 0x/1x.
4.	[VIGOR]	Fixed an issue where the station number setting is not correctly initialized.

## Software Version : EasyBuilder Pro V6.04.01.473

### Corrections

1. Fixed an issue where addresses used by bool arrays in macro and Option List are not shown in the address grid.
2. Fixed an issue where extended memory related error messages may appear during compilation when an earlier version project is opened using new version software.
3. Fixed an issue where the position of the flow block is incorrect when an earlier version project is opened using new version software.
4. Fixed an issue where macros used in Numeric Input, Action Trigger, and Touch Gesture cannot be found by Find / Replace.
5. Increased maximum allowable length to 256 characters for Connection String of MQTT Azure IoT.
6. Removed string table related settings for iP Series since they are not supported on iP Series.

### Drivers

- |    |  |  |
|----|--|--|
| 5. | [Rockwell Micro850]  | Fixed an issue where using a non-zero index in an array in Structure may result in data reading error. |
| 6. | [Moeller XC-CPU101]  | Added MW_bit address.  |
| 7. | [Schneider MODBUS TCP/IP]  | Fixed an issue where bool array addresses are not correctly displayed after importing an XSY file.     |
| 8. | [OMRON EtherNet/IP NJ/NX Series]   | Added support for Import / Export.   |
| 9. | Fixed an issue where off-line simulation cannot be closed normally when using certain drivers. |  |

## Software Version : EasyBuilder Pro V6.04.01.388

### Corrections

1. [Multi-State Switch] Fixed an issue where the Apply button in object's properties window does not work properly.
2. Declared variables in macro will retain the result from last execution.
3. [iP] Fixed an issue where dates on Trend Display's time axis are not displayed.
4. Fixed an issue where the screensaver appears only once on iOS version cMT Viewer.
5. [Database Server] Fixed an issue where [Use domain name] setting cannot be remembered.

### Drivers

10.	[Schleicher XCX 300/800]	Added MD_STRING address type. Added support for importing LocalVariable(POU).
11.	[Rockwell Micro850] [OMRON CJ/CS/CP (Ethernet – FINS/TCP)] [Beckhoff TwinCAT 3 ADS/AMS (Ethernet)] [Rockwell - Free Tag Names]	Fixed issues relating to tag import.
12.	[XINJE XD Series (Ethernet)]	Expanded address ranges.
13.	[XINJE XD Series MODBUS TCP/IP]	Added new driver.

## Software Version : EasyBuilder Pro V6.04.01.291

### Corrections

#### EasyBuilder Pro

1. Fixed an issue where in [System Parameters] » [Security], certain settings are not correctly saved.
2. [iE/XE/eMT/mTV] Fixed an issue where the setting of system register LB-12089 is not retained after rebooting HMI.
3. [cMT] Updated printer driver suite to hplip 3.19.12 version.
4. Fixed issues concerning compilation of cMT-G03 project files.
5. [cMT] Added system registers that support configuring devices up to device 64.
6. [cMT] Fixed a comparison logic issue of ">=" in macro.
7. [Serial Pass-Through] Updated the virtual COM driver. On Win10 computers, the driver can work properly after installation without the need for changing BIOS setting.

### Drivers

12. [Mitsubishi A2A/A2U/A2AS/A2USH]	Added A2USH device type.
13. [BACnet/IP Server]	Fixed an issue that causes the server to not work properly.
14. [MODBUS RTU, RTU over TCP] [MODBUS RTU Zero-based Addressing] [MODBUS Hex Addressing] [ELSIST MODBUS RTU] [CD MODBUS RTU]	Fixed an issue where HMI may stop operating when setting 0x register ON. This issue only affects versions ranging from 6.04.01.078 to 6.04.01.286.

## Software Version: EasyBuilder Pro V6.04.01.250

### Supported Models

Added cMT3092X, cMT3152X, and cMT3162X.

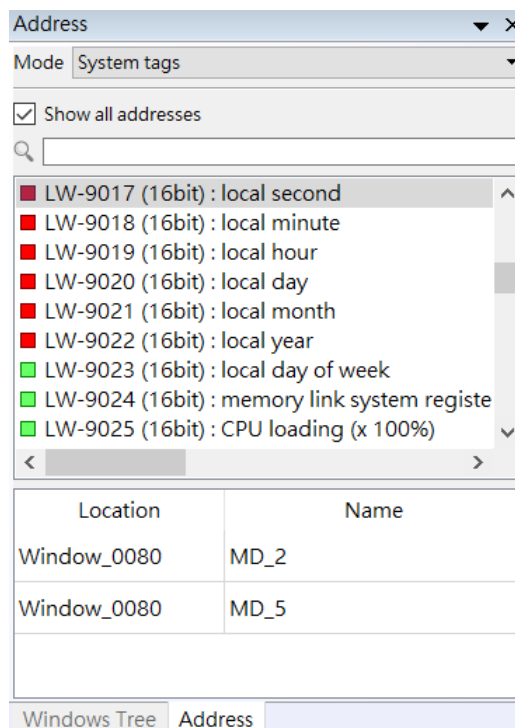
### New Features

#### EasyBuilder Pro

- Added Opacity setting in View tab. This setting adds transparency effect to the common window, overlay windows, and window layers. The screenshot below shows the middle object, placed in a different window layer, having transparent effect.



- Added support for showing user-defined tags and system registers in Address Grid.





- 10.** Added support for showing the label tag name of the object (if a label tag is used). This setting can be found in View tab.

### cMT Series

All features listed in this section is available exclusively for cMT series only.

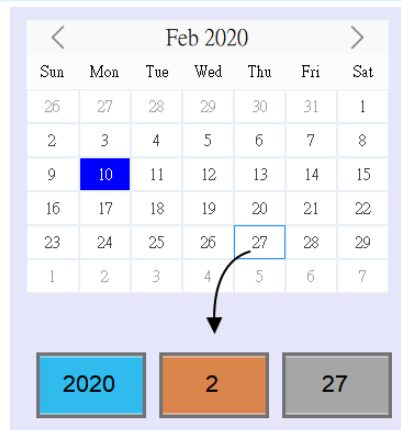
1. **[Touch Gesture]** Added the touch gesture feature. (applicable only for cMT3152X, cMT3162X)
2. **[Enhanced Security Mode]** Added support for user login with Microsoft AD (LDAP protocol).
3. **[Direct Window]** Added support for changing window position dynamically. This setting can be found in the Position tab in the object settings window.  
**[Indirect Window]**
4. **[Meter]** For the customized meter style, changed pointer width and length setting value to percentage instead, and allowed wider range of values for selection. With the new settings, using a 1:1 picture as pointer style is possible, as shown in the following compass example application.



5. **[Numeric]** Added support for using Scientific Notation for Numeric objects, as shown in the object on the left in the screenshot below.

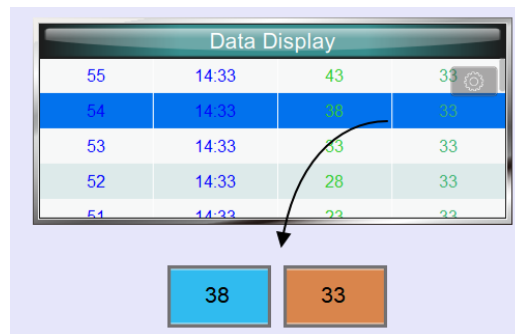


6. **[Trend Display]** Added support for setting decimal places for Y-axis values. This setting can be found in the Data Format tab in the object settings window.
7. **[Calendar]** Added output feature. By tapping on a date in the calendar, the date can be output to the designated addresses.



### 8. [History Data Display]

Added watch feature. By tapping on a record in History Data Display object, data in the selected row can be output to the designated addresses. This setting can be found in the General tab in the object settings window.



### 9. [System Parameters]

Added a new option: "Set value when leaving focus". When this option is selected, values will be written upon leaving the input mode of a Numeric / ASCII object, even if not by pressing the ENTER key. This setting can be found in General tab of System Parameter Settings.

### 10. [Backup(Per-page)] [Backup(Global)]

Added support for separating files according to date or number of rows when saving backup as CSV file.

### 11. [Recipe Database]

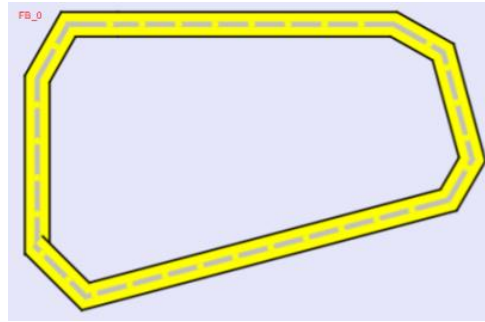
Added bit access support for BCD, HEX, Binary data types.

### 12. [Database Server]

Enabled TLS/SSL encryption and server verification when using MySQL. This feature can be configured in TLS/SSL tab.

### 13. [Flow Block]

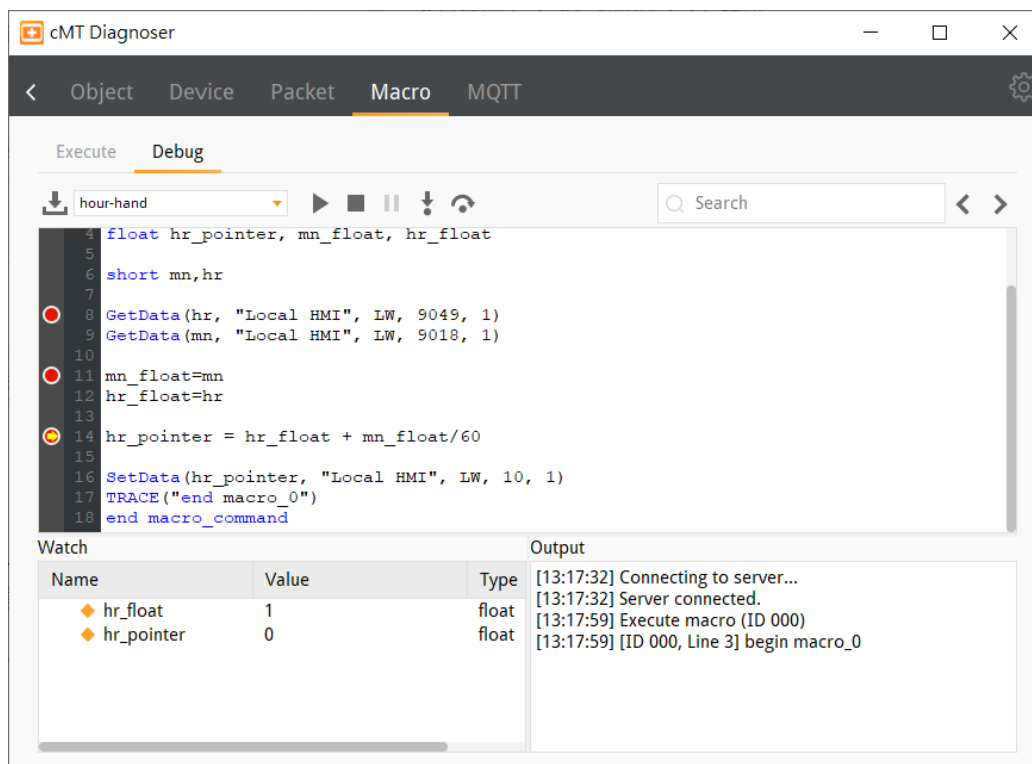
Added support for drawing non-vertical/horizontal lines as shown in the following screenshot.



14. **[Action Trigger]**      Added support for transferring multiple files in a folder using File Transfer (FTP).
15. **[Video Input]**      Added support for setting the recording time for Video Input .

### cMT Diagnoser

1. Added Macro Debug tool.



### cMT Viewer

1. Added support for cMT Viewer to retain the value of the system register PLW-9134 (language mode (on tablet)). That is, when cMT Viewer is opened next time, it resumes last language setting.

### ***Drivers***

- |    |  |                   |
|----|--|-------------------|
| 1. | [MICRO TREND<br>UTREND UTC SERIES]         | Added new driver. |
| 2. | [KUKA EtherNet/IP<br>(Implicit Messaging)] | Added new driver. |
-