

# 78 Series Relay Sockets

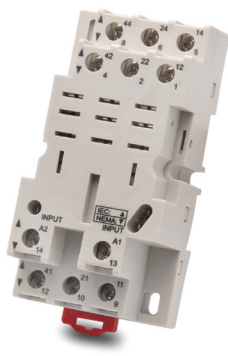
78 Series Relay Sockets				
Part Number	Price	Description	Drawing Link	Agency Approval
<a href="#">781-1C-SKT</a>		AutomationDirect relay socket, 35mm DIN rail or panel mount. For use with 781 series cube relays.	<a href="#">PDF</a>	UL Recognized file number: E225080
<a href="#">782-2C-SKT</a>		AutomationDirect relay socket, 35mm DIN rail or panel mount. For use with 782 and AD-70S2 series cube relays.	<a href="#">PDF</a>	
<a href="#">783-3C-SKT</a>		AutomationDirect relay socket, 35mm DIN rail or panel mount. For use with 783 series cube relays.	<a href="#">PDF</a>	
<a href="#">784-4C-SKT-1</a>		AutomationDirect relay socket, 35mm DIN rail or panel mount. For use with 784 series cube relays.	<a href="#">PDF</a>	



781-1C-SKT



782-2C-SKT



783-3C-SKT



784-4C-SKT-1

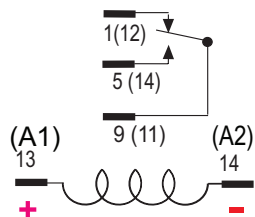
78 Series Relay Sockets Screw Torques and Wire Sizes		
Part Number	Maximum Screw Torques	Maximum Wire Sizes
<b>781-1C-SKT</b>	Terminals 13, 14: 7 in·lbs/0.8 N·m Terminals 1, 5, 9: 9 in·lbs/1.0 N·m	Terminals 13, 14: 18 to 20 AWG, solid or stranded, one or two identical wires Terminals 1, 5, 9: 12 to 20 AWG, solid or stranded, one or two identical wires
<b>782-2C-SKT</b>	All terminals: 9 in·lbs/1.0 N·m	All terminals: 12 to 20 AWG, solid or stranded, one or two identical wires
<b>783-3C-SKT</b>		
<b>784-4C-SKT-1</b>		

Note: Order sockets separately; holding clips are included with sockets.

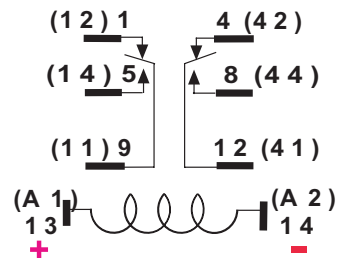
# 78 Series Wiring Diagrams

## Wiring Diagrams (viewed from pin end)

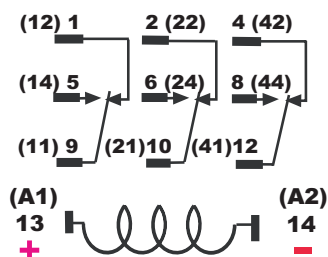
781-1C-XXX



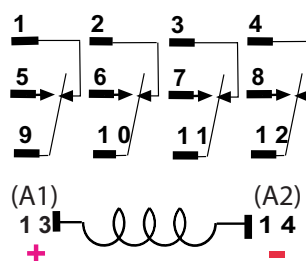
782-2C-XXX



783-3C-XXX



784-4C-XXX



\*Note: ALTERNATE NEMA OR IEC ( ) NUMBERS, VIEWED FROM PIN SIDE