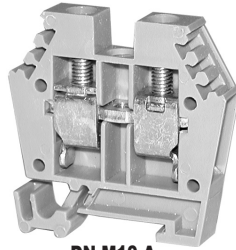
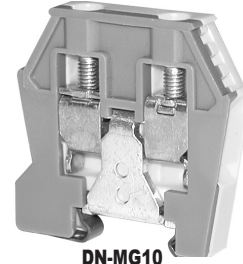


# Mini Terminal Blocks

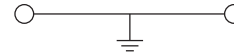
Mini terminal blocks are used in areas with extremely limited space requirements, and mount on the smaller DIN rail type DN-R15S1.



**DN-M10-A**  
Series: EURO 4/15

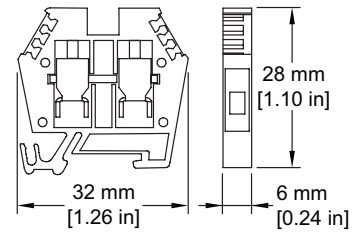


**DN-MG10**  
Series: EURO E4/15

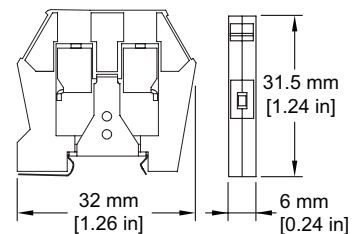


Ordering Information						
	Part Number	Qty	Price	Part Number	Qty	Price
Gray Block	<a href="#">DN-M10-A</a>	100	-	-	-	-
Blue Block	<a href="#">DN-M10B-A</a>	100	-	-	-	-
Green/Yellow Block	-	-	-	<a href="#">DN-MG10</a>	20	-
Technical Specifications						
Stripping Length	10mm [0.39 in]			10mm [0.39 in]		
Tightening Torque	0.6 N·m [5.3 lb·in]			0.6 N·m [5.3 lb·in]		
Density	142/m [43 pcs/ft]			166/m [50 pcs/ft]		
CE Conformity	LVD 2006/95/EC			LVD 2006/95/EC		
UL Approval*	300V	30A	24-10 AWG	-	-	18-10 AWG
CSA Approval	300V	30A	24-10 AWG	-	-	18-10 AWG
VDE Approval	400V	32A	4mm <sup>2</sup>	-	-	4mm <sup>2</sup>
Operating Temperature	Ambient air temperature: -20 to 105°C [-4 to 221°F] Relative humidity: 50% max at 40°C [104°F]; 90% max at 20°C [68°F]					
SCCR Rating	10kA per Table SB4.1, 2009, UL 508A, Maximum short circuit current rating for unmarked components					
CE Conformity	CE (EN 60947-1 / EN 60947-7-1)					
Agency File #	UL E179129					

**DN-M10-A**



**DN-MG10**



Note: To obtain the most current agency approval information, see the Agency Approval Checklist section on the specific part number's web page.

Accessories						
End Covers	<a href="#">DN-ECM10</a>		100			
	<a href="#">DN-ECM10MN</a>		25			
Jumpers	2-pole	<a href="#">DN-2J4Y</a>	100			
		<a href="#">DN-2J4YMN</a>	25			
	3-pole	<a href="#">DN-3J4Y</a>	100			
		<a href="#">DN-3J4YMN</a>	25			
24-pole	<a href="#">DN-24J4Y</a>	5				
Jumper Cutting Tool**	<a href="#">DN-J4CUT</a>		1			
Top Cover	<a href="#">DN-MC10</a>		100			
	<a href="#">DN-MC10MN</a>		25			
Test Plug/Red	<a href="#">DN-TPR</a>		10			
Test Plug/Black	<a href="#">DN-TPB</a>		10			
15mm DIN Rail	5.5 mm high	<a href="#">DN-R15S1</a>	10	<a href="#">DN-R15S1</a>	10	
		<a href="#">DN-R15S1-2</a>	2	<a href="#">DN-R15S1-2</a>	2	
End Brackets	<a href="#">DN-EB15</a>		100			
	<a href="#">DN-EB15MN</a>		20			
Angled Support Bracket	<a href="#">DN-ASB1</a>		50	<a href="#">DN-ASB1</a>	50	
Marking Tags	DN-LT series		100	various	DN-LT series	100

\* For copper wire only

\*\* Jumper cutting tool DN-J4CUT cuts DN-xJ4Y Series multi-pole jumpers and maintains the jumper insulations. For more information on accessories, see the DINnectors Accessories section of this chapter.

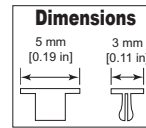
## Marking Tags Cross Reference Charts - Screw-type

<b>DINector Marking Tags Cross Reference - Screw-type</b>					
<i>Block Type</i>	<i>DN-L</i>	<i>DN-LA</i>	<i>DN-LT</i>	<i>DN-LAT</i>	<i>DN-EMLBL</i>
<i>DN-T12</i>	-	X	X	-	-
<i>DN-T10</i>	X	-	X	-	-
<i>DN-T8</i>	X	-	X	-	-
<i>DN-T6</i>	X	-	X	-	-
<i>DN-T4</i>	X	-	X	-	-
<i>DN-T1/0</i>	X	-	X	-	-
<i>DN-T3/0</i>	X	-	X	-	-
<i>DN-D10</i>	X	-	X	-	-
<i>DN-D10X</i>	X	-	X	-	-
<i>DN-D10LED</i>	X	-	X	-	-
<i>DN-D10DR</i>	X	-	X	-	-
<i>DN-TL14</i>	-	-	-	X	-
<i>DN-THERM</i>	X	-	X	-	-
<i>DN-EMXM1</i>	-	X	X	-	X
<i>DN-EMXDV</i>	-	X	X	-	X
<i>DN-M10</i>	-	-	X	-	-
<i>DN-MG10</i>	-	-	X	-	-
<i>DN-G10</i>	X	-	X	-	-
<i>DN-G8</i>	X	-	X	-	-
<i>DN-G6</i>	X	-	X	-	-
<i>DN-G4</i>	X	-	X	-	-
<i>DN-G1/0</i>	X	-	X	-	-
<i>DN-F6</i>	X	-	X	-	-
<i>DN-F10</i>	X	-	X	-	-
<i>DN-DIS2</i>	-	X	X	-	-
<i>DN-DIS4</i>	X	-	X	-	-
<i>DN-FE2</i>	-	X	X	-	-
<i>DN-FE4</i>	X	-	X	-	-
<i>DN-DIS10</i>	X	-	X	-	-
<i>DN-KBD12</i>	-	X	X	-	-

Continued on next page

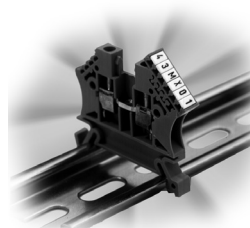
## Marking Tags continued

Marking Tags DN-LT Series			
Part Number	Marking Sequence	Qty	Price
<a href="#">DN-LT15</a>	1-5	100	
<a href="#">DN-LT60</a>	6-0	100	
<a href="#">DN-LT1</a>	1	100	
<a href="#">DN-LT2</a>	2	100	
<a href="#">DN-LT3</a>	3	100	
<a href="#">DN-LT4</a>	4	100	
<a href="#">DN-LT5</a>	5	100	
<a href="#">DN-LT6</a>	6	100	
<a href="#">DN-LT7</a>	7	100	
<a href="#">DN-LT8</a>	8	100	
<a href="#">DN-LT9</a>	9	100	
<a href="#">DN-LT0</a>	0	100	
<a href="#">DN-LTBLNK</a>	Unprinted	100	
<a href="#">DN-LTA</a>	A	100	
<a href="#">DN-LTB</a>	B	100	
<a href="#">DN-LTC</a>	C	100	
<a href="#">DN-LTD</a>	D	100	
<a href="#">DN-LTE</a>	E	100	
<a href="#">DN-LTF</a>	F	100	
<a href="#">DN-LTG</a>	G	100	
<a href="#">DN-LTH</a>	H	100	
<a href="#">DN-LTI</a>	I	100	
<a href="#">DN-LTJ</a>	J	100	
<a href="#">DN-LTK</a>	K	100	
<a href="#">DN-LTL</a>	L	100	
<a href="#">DN-LTM</a>	M	100	
<a href="#">DN-LTN</a>	N	100	
-	-	-	-
<a href="#">DN-LTP</a>	P	100	
<a href="#">DN-LTQ</a>	Q	100	
<a href="#">DN-LTR</a>	R	100	
<a href="#">DN-LTS</a>	S	100	
<a href="#">DN-LTT</a>	T	100	
<a href="#">DN-LTU</a>	U	100	
<a href="#">DN-LTV</a>	V	100	
<a href="#">DN-LTW</a>	W	100	
<a href="#">DN-LTX</a>	X	100	
<a href="#">DN-LTY</a>	Y	100	
<a href="#">DN-LTZ</a>	Z	100	
<a href="#">DN-LTGND</a>	⊕	100	
<a href="#">DN-LTPOS</a>	+	100	
<a href="#">DN-LTNEG</a>	-	100	
<a href="#">DN-LTAC</a>	~	100	
<a href="#">DN-LTDC</a>	=	100	

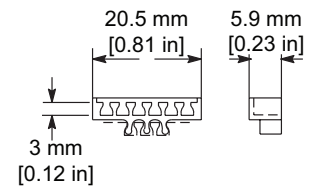


- These marking tags allow the flexibility of creating custom marking sequences on site.
- The DN-M series supports a maximum of three digits (tags), while other DINnectors support up to four digits (tags).
- Material: Thermoplastic with heat embossed black print.

DN-MTA marking tag adapter



DN-MTA dimensions



Part Number	Description	Qty	Price
<a href="#">DN-MTA</a>	Marking tag adapter holds up to six DN-LT tags	50	

Note: DN-MTA adapter does not fit DN-T12-A terminal blocks.

## Terminal Marking Accessories



**DN-EMLBL1**



**DN-EMLBL2**



**DN-EMLBL3**

Part Number	Description	For Use With	Qty	Price
<b>DN-EMLBL1</b>	Blank labels	DN-EMPEG1 pin protectors for DN-xEMXxx plug-in terminal blocks	100	
<b>DN-EMLBL2</b>	Labels printed 1 – 12		100	
<b>DN-EMLBL3</b>	Labels printed 13 – 24		100	

## Marking Pen – for terminal and wire marking tags

- Permanent
- Smudge-proof
- Waterproof
- Weatherproof
- Lightfast (won't fade)
- Dries in seconds (excellent for left-handed users)
- Dry-safe (pen can be left uncapped for days without drying out)
- Low odor ink

Part Number	Description	Qty	Price
<b>DN-MP</b>	Indelible black ink marking pen	1	



**Marking pen**

## Wire Marking Accessories



**DN-WMTAG1 wire tags & DN-WM-x wire tag holders**

Part Number	Description	For Use With	Qty	Price
<b>DN-WMTAG1</b>	Wire tag – blank	all DN-WM-x wire tag holders	525	
<b>DN-WM-1</b>	Wire tag holder, clear, 12mm length, 0.051–0.118 in diameter; for 22–16 AWG wire	DN-WMTAG1	200	
<b>DN-WM-2</b>	Wire tag holder, clear, 12mm length, 0.098–0.196 in diameter; for 16-11 AWG wire		200	
<b>DN-WM-3</b>	Wire tag holder, clear, 12mm length, 0.157–0.393 in diameter; for 13–5 AWG wire		100	
<b>DN-WM-4</b>	Wire tag holder, clear, 12mm length, 0.314–0.629 in diameter; for 5AWG wire		100	