

Two-position key switches



Key Switches			
Part Number	Description	Price	Drawing Link
E22KB53A	Selector switch, black bezel, 2-position key, "OFF ON" with one N.O. contact block		PDF
E22KB62A	Selector switch, black bezel, 2-position key, spring from right "OFF ON" with one N.O. contact block		PDF

See specifications and mounting data at the beginning of this E22 series section.

Notes:

All E22 series key switches are keyed alike. The key is not compatible with the metal 22mm key switches.

All E22 series key switches will hold only one single row of (2) contacts (non-stackable).

Key can be removed in all positions.

Replacement contact blocks

E22B1



E22B2



E22CB1M



Replacement Contact Blocks			
Part Number	Description	Price	Drawing Link
E22B1*	One N.C. contact (Direct Opening Action)		PDF
E22B2	One N.O. contact		PDF
E22B11*	One N.O., One N.C. contact (N.C. Direct Opening Action)		PDF
E22B20	Two N.O. contacts		PDF
E22CB1M*	Self-monitoring contact block (N.C. Direct Opening Action)		PDF

Note: See contact electrical ratings on E22 series mounting and contact ratings page in this E22 series section.

*All N.C. contact blocks are EN 418 compliant when used with compliant operators.

EAT·N E22 Accessories

Cutler-Hammer

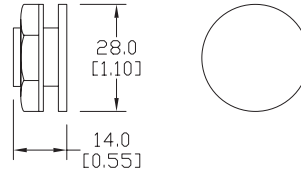
Octagonal wrench



Hole plug



Dimensions: mm [inches]



Bulb removal tool



Guard for E22 E-stop



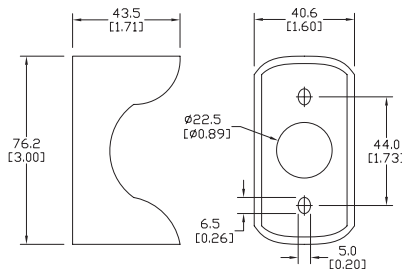
Replacement incandescent bulbs



Replacement LED lamps



Accessories		
Part number	Description	Price
HT8WRENCH	Octagonal wrench for tightening back-of-panel mounting nut on all Cutler-Hammer operators.	
E22BHP	Hole plug for unused 22mm panel holes.	
HT8LAMP TOOL	Lamp extraction tool for removing lamps from switches, indicators and stacklights	
E22MGTA	22mm yellow guard for E22LTA2QB and E22LPB2B for emergency stop applications.	



Replacement Incandescent Bulbs				
Part Number	Rating	Description	Quantity	Price
ECX1900-5	6V, 1.2 watts	6V replacement bulb for 22mm switches and indicators. Miniature bayonet base T31/4.	5	
ECX1902-5	24V@ 80mA	24V replacement bulb for 22mm switches and indicators. Miniature bayonet base T31/4.	5	
ECX1904-5	130V@20mA	120V replacement bulb for 22mm switches and indicators. Miniature bayonet base T31/4.	5	
W1121	120V@20mA	Replacement bulb for Cutler-Hammer E22 full voltage indicators and switches. Does not replace the LED monoblock indicators.	4	
W1226	60V@20mA	Replacement bulb for Cutler-Hammer E22 resistor indicators, switches and pushbuttons. Does not replace the LED monoblock indicators.	4	
W1819	24V@20mA	Replacement bulb for Cutler-Hammer E22 indicators and pushbuttons. Does not replace the LED monoblock indicators.	4	

Replacement LED Lamps						
Part Number	Color	Rating	Description	Quantity	Price	
ECX1911-2	Red	24V@26mA	LED replacement lamp for miniature bayonet bases Works with 22mm switches and indicators, but illumination will not be as even when used with the ECX 22mm indicators Note: Will not replace sealed Cutler-Hammer monoblock LED indicators.	2		
ECX1912-2	Green					
ECX1913-2	Yellow					
ECX1914-2	Blue					
ECX1915-2	White					
ECX1921-2	Red	120V@5mA				
ECX1922-2	Green					
ECX1923-2	Yellow					
ECX1924-2	Blue					
ECX1925-2	White					

EATON E22 Legend Plates

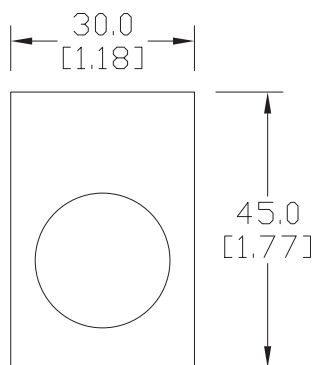
Cutler-Hammer

Legend plates

Aluminum legend plates feature a plastisol backing to help prevent rotation of the operator.



Dimensions: mm [inches]



E22VA8



Legend Plates				
Part Number	Price	Color	Legend	Drawing Link
E22NS11		Black	"CLOSE"	PDF
E22NS12		Black	"DOWN"	PDF
E22NS13		Red	"EMERG. STOP"	PDF
E22NS15		Black	"FORWARD"	PDF
E22NS19		Black	"JOG"	PDF
E22NS25		Black	"ON"	PDF
E22NS26		Black	"OPEN"	PDF
E22NS30		Black	"REVERSE"	PDF
E22NS31		Black	"RUN"	PDF
E22NS33		Black	"START"	PDF
E22NS34		Red	"STOP"	PDF
E22NS35		Black	"UP"	PDF
E22NS36		Black	Blank plate	PDF
E22NS37		Red	Blank plate	PDF
E22NS38		Black	"FOR-REV"	PDF
E22NS39		Black	"HAND-AUTO"	PDF
E22NS41		Black	"JOG-RUN"	PDF
E22NS42		Black	"OFF-ON"	PDF
E22NS43		Black	"OPEN-CLOSE"	PDF
E22NS48		Black	"UP-DOWN"	PDF
E22NS50		Black	"FOR-OFF-REV"	PDF
E22NS51		Black	"HAND-OFF-AUTO"	PDF
E22NS80		Black	"POWER ON"	PDF
E22NS81		Black	"MOTOR RUN"	PDF
E22NS82		Black	"MOTOR STOP"	PDF
E22NL36		Black	Jumbo alum. blank plate (1.57 in wide x 1.85 in tall)	PDF
E22NL37		Red	Jumbo alum. blank plate (1.57 in wide x 1.85 in tall)	PDF
E22NSP77		Red /black	Plastic blank plate; red on one side, black on other side; either side can have letters engraved down into white plastic	PDF
E22VA8		Yellow	"EMERGENCY STOP" oversize yellow legend plate, 2.76" (70mm), printed	N/A

NOTE: Legend plates also work with the GCX/ECX series 22mm metal switches. The removal of the locator tab on the legend plate is required. This is easily accomplished with a round file or small grinder.