

EATON E22 Legend Plates

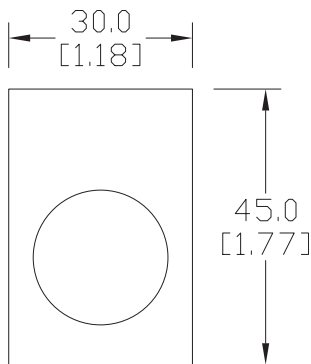
Cutler-Hammer

Legend plates

Aluminum legend plates feature a plastisol backing to help prevent rotation of the operator.



Dimensions: mm [inches]



E22VA8



Legend Plates				
Part Number	Price	Color	Legend	Drawing Link
E22NS11		Black	"CLOSE"	PDF
E22NS12		Black	"DOWN"	PDF
E22NS13		Red	"EMERG. STOP"	PDF
E22NS15		Black	"FORWARD"	PDF
E22NS19		Black	"JOG"	PDF
E22NS25		Black	"ON"	PDF
E22NS26		Black	"OPEN"	PDF
E22NS30		Black	"REVERSE"	PDF
E22NS31		Black	"RUN"	PDF
E22NS33		Black	"START"	PDF
E22NS34		Red	"STOP"	PDF
E22NS35		Black	"UP"	PDF
E22NS36		Black	Blank plate	PDF
E22NS37		Red	Blank plate	PDF
E22NS38		Black	"FOR-REV"	PDF
E22NS39		Black	"HAND-AUTO"	PDF
E22NS41		Black	"JOG-RUN"	PDF
E22NS42		Black	"OFF-ON"	PDF
E22NS43		Black	"OPEN-CLOSE"	PDF
E22NS48		Black	"UP-DOWN"	PDF
E22NS50		Black	"FOR-OFF-REV"	PDF
E22NS51		Black	"HAND-OFF-AUTO"	PDF
E22NS80		Black	"POWER ON"	PDF
E22NS81		Black	"MOTOR RUN"	PDF
E22NS82		Black	"MOTOR STOP"	PDF
E22NL36		Black	Jumbo alum. blank plate (1.57 in wide x 1.85 in tall)	PDF
E22NL37		Red	Jumbo alum. blank plate (1.57 in wide x 1.85 in tall)	PDF
E22NSP77		Red /black	Plastic blank plate; red on one side, black on other side; either side can have letters engraved down into white plastic	PDF
E22VA8		Yellow	"EMERGENCY STOP" oversize yellow legend plate, 2.76" (70mm), printed	N/A

NOTE: Legend plates also work with the GCX/ECX series 22mm metal switches. The removal of the locator tab on the legend plate is required. This is easily accomplished with a round file or small grinder.