

Fuji Electric Accessories for 30mm Command Series Pilot Devices



AHX177-00



AHX177-0B

Legend Plates for Command Series 30mm Devices					
Part Number	Price	Drawing Link	Legend	Material	Color
AHX177-00		PDF	blank	brass	Silver field, silver background
AHX177-0B		PDF	OFF	brass	Silver field, silver background, black text
AHX177-0A		PDF	ON	brass	
AHX177-0C		PDF	START	brass	
AHX177-0D		PDF	STOP	brass	
AHX177-2A		PDF	OFF-ON	brass	
AHX720-5A		PDF	EMERGENCY STOP	aluminum	Yellow field, yellow background, black text



AHX720-5A

Tools and Lock Nut for Use with Command Series 30mm Pilot Devices			
Part Number	Qty	Price	Description
AR9A006	1		Mounting wrench, for use with AR22, AR30, DR22, and DR30 series pushbuttons, switches, indicators, and buzzers.
AR9R055	5		30mm guard ring replacement, for use with AR30G2L series pushbuttons.
AHX082	5		30mm key washer, for use with AR30 and DR30 series pushbuttons, indicators, and buzzers.
AHX088	5		30mm lock nut replacement for AR30F0R, DR30D0L, E0L, E0R, and Q7L series.
AHX093	5		30mm lock nut replacement for AR30M0R, A_N, JR, PL, PR, Q2R, and WR series.
AHX282	5		30mm sealing/spacing washer replacement, for use with AR30 and DR30 series pushbuttons, switches, indicators, and buzzers.



AR9R055



AHX082



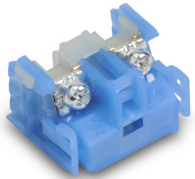
AHX088



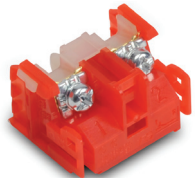
AHX282

Accessories for 30mm Command Series Pilot Devices

Contact Blocks



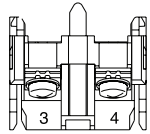
AR9B290



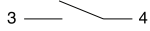
AR9B291

Contact Blocks for Command Series 30mm Pushbuttons					
Part Number	Qty	Price	Drawing Link	Color	Contacts
<u>AR9B290</u>	1		<u>PDF</u>	Blue	N.O.
<u>AR9B291</u>	1		<u>PDF</u>	Red	N.C.

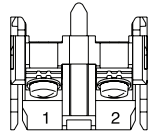
Terminal Layout



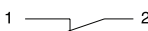
Terminal No.3, 4



AR9B290



Terminal No.1, 2



AR9B291