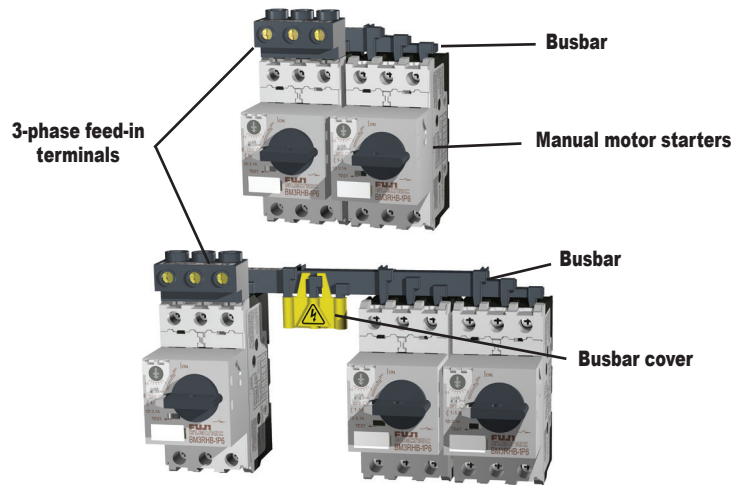


Fuji Duo Series Manual Motor Starters Accessories

Busbar system

Features

- The busbar system reduces wiring time and saves floor space.
- The busbar makes it easy to power from 2 to 5 manual motor starters, with no wiring needed.
- The 3-phase feed-in terminals are used to connect the wire for the power supply circuit.
- The busbar cover guards against accidental touching of nonconnected busbar terminals (charged parts).
- If using BZ0TCRE terminal cover with BM3R series MMS, the busbar system can not be used.



BZ0BR02A



BZ0BR03A



BZ0BR04A



BZ0BR05A



BZ0BR12A



BZ0BR13A



BZ0BR14A



BZ0BR15A



BZ0BV02A



BZ0BV03A

Note: Busbar photos continued on next page.



BZ0BFRA



BZ0BFVA



BZ0BCRA



BZ0BCVA

Busbar System Components and Ratings

Part Number	Price	Description	Used with	Specifications	Weight (g)	
BZ0BR02A		Busbar	BM3R	Continuous current: 64A max. pin connection	2-BM3R, modular space: 45mm	30
BZ0BR03A					3-BM3R, modular space: 45mm	50
BZ0BR04A					4-BM3R, modular space: 45mm	70
BZ0BR05A					5-BM3R, modular space: 45mm	90
BZ0BR12A					2-BM3R, modular space: 54mm	30
BZ0BR13A			3-BM3R, modular space: 54mm	55		
BZ0BR14A			4-BM3R, modular space: 54mm	80		
BZ0BR15A			5-BM3R, modular space: 54mm	105		
BZ0BV02A			BM3V	Continuous current: 126A max. pin connection	2-BM3V, modular space: 55mm	140
BZ0BV03A					3-BM3V, modular space: 55mm	240
BZ0BV04A					4-BM3V, modular space: 55mm	340
BZ0BV12A					2-BM3V, modular space: 64mm	150
BZ0BV13A					3-BM3V, modular space: 64mm	270
BZ0BV14A			4-BM3V, modular space: 64mm	380		
BZ0BFRA			3-phase feed-in terminal	BM3R	Continuous current: 64A max. Applicable cable size: 25mm ² max.	40
BZ0BFVA		BM3V		Continuous current: 126A max. Applicable cable size: 50mm ² max.	170	
BZ0BCRA		Busbar cover	BZ0BR	For pin connection	10	
BZ0BCVA			BZ0BV	NOTE: Some fine tuning and fitting adjustments may be needed.	5	

Fuji Duo Series Manual Motor Starters Accessories

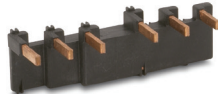
Busbar system (continued)

Dimensions

(mm)



BZ0BV04A



BZ0BV12A



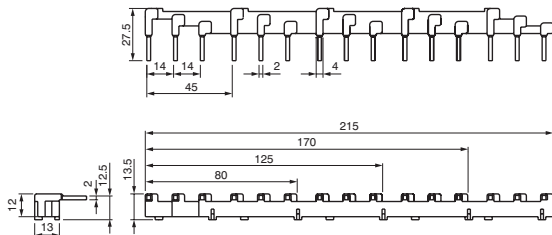
BZ0BV13A



BZ0BV14A

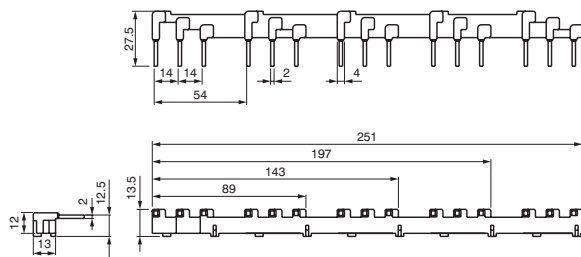
For BM3RHB-xxx

BZ0BR0xx Without external accessory



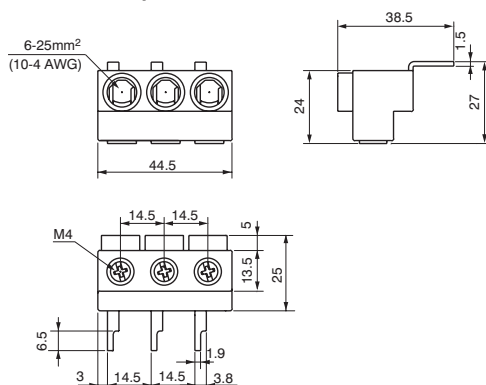
- BZ0BR02A: 80 mm
- BZ0BR03A: 125 mm
- BZ0BR04A: 170 mm
- BZ0BR05A: 215 mm

BZ0BR1xx With 1 external accessory



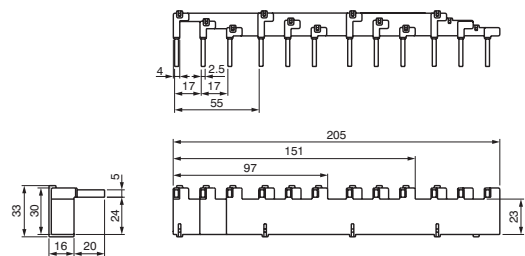
- BZ0BR12A: 89 mm
- BZ0BR13A: 143mm
- BZ0BR14A: 197 mm
- BZ0BR15A: 251 mm

BZ0BFRA 3-phase feed-in terminals



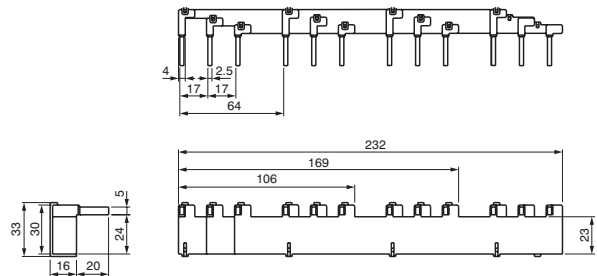
For BM3VHB-xxx

BZ0BV0xx Without external accessory



- BZ0BV02A: 97 mm
- BZ0BV03A: 151 mm
- BZ0BV04A: 205 mm

BZ0BV1xx With 1 external accessory, 9mm wide



- BZ0BV12A: 106 mm
- BZ0BV13A: 169 mm
- BZ0BV14A: 232 mm

BZ0BFVA

