

GS1,GS2,GS3/DURAPULSE Accessories – Ethernet Interface



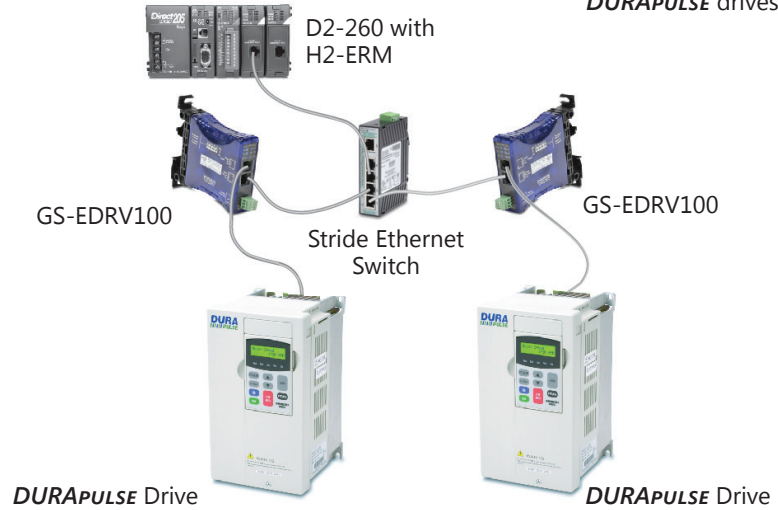
Note: GS1, GS2, GS3 AC Drives only

GS-EDRV100 works with GS1, GS2, & GS3 DURAPULSE drives.

GS-EDRV100 Overview

The GS-EDRV100 Ethernet interface provides a high-performance Ethernet link between a control system and any GS or DURAPULSE AC drive. The GS-EDRV100 processes signals to and from the drive, mounts on 35mm DIN rail, and connects the drive to an Ethernet hub or PC. It formats drive signals to conform with the Ethernet standard and transmits these signals to the H2-ERM or H4-ERM, Productivity3000, or independent controller with a Modbus TCP/IP driver. This allows for greater connectivity to many control system architectures.

An additional feature is the built-in Web server which allows users to configure and control the drive from any Web browser via the IP address of the GS-EDRV100 card.

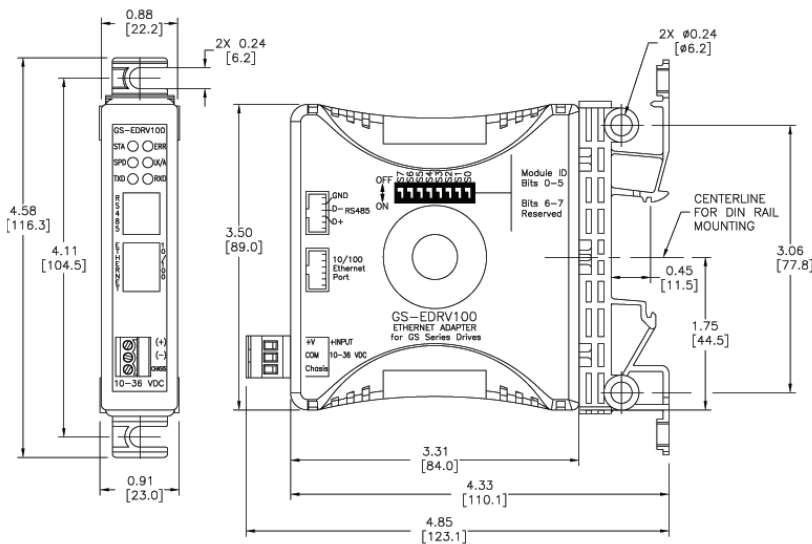


Note: The GS-EDRV100 requires an external 24 VDC power supply.

Automatic power shut-down

The GS series drives have a provision for shutting down control or power to the inverter in the event of a communications time-out. This function can be set up through the drive's parameter group 9.

Dimensions: inches[mm]



- LED Indicators
- STA - Status
- SPD - 100Mbps
- TXD - Transmit
- ERR - Module Error
- LK/A - Link/Active
- RXD - Receive

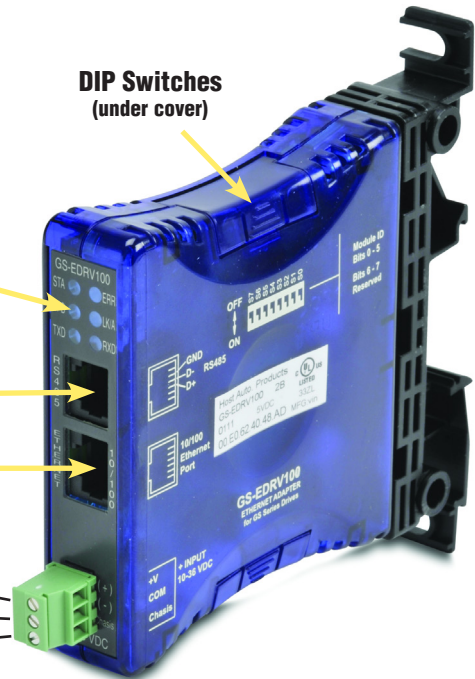
Serial Port

Ethernet Port

Power Terminals
(Class 2 power recommended)

- Positive connection (+) or +10-36VDC
- Negative connection (-) or 0VDC
- Chassis or system ground connection

DIP Switches
(under cover)



GS-EDRV100 Specifications

Part Number	GS-EDRV100
Price	
Approvals	cUL Listed, file number E185989
Input Voltage	10-36 VDC
Input Current	50-220 mA
NOTE: Can be used with GS1, GS2, & GS3/DURApulse series AC drives.	
NOTE: Package includes 2-ft. serial communications cable.	
NOTE: Mounts on 35mm DIN rail.	