

# KILLARK Hazardous Location Controls FXCS Series Factory Sealed Controls Overview

## Applications, Features, Listings, and Electrical Ratings



### Applications

Factory sealed pushbutton stations, selector switches and pilot lights are used to prevent the igniting of external hazardous atmospheres by the enclosed arcing devices in such areas as:

- Hazardous locations due to the presence of flammable gases or vapors, combustible dusts or easily ignitable fibers or flyings
- Installations at petroleum refineries, chemical and petrochemical plants and other processing or storage facilities where similar hazards exist
- Use in conjunction with magnetic starters or contactors for remote control of motors

### Listings

- UL Listed; File E53360
- Class I, Div. 1 & 2, Groups C, D
- Class II, Div. 1 & 2, Groups E, F, G
- Class III
- NEMA 3, 7 (C, D) 9 (E, F, G)
- CSA Certified; File LR11714
- Class I, Zones 1 & 2, Groups IIB, IIA



### Features

- Eliminates external sealing requirements
- Lower installation cost
- NEMA 3 weatherproof
- Color coded wiring
- More wiring space for easier field installation
- Stainless steel captive screws for cover assembly
- Ground boss for grounding in the splice box
- Cast conduit hubs 1/2", 3/4" and 1" NPT either dead end or feed through standard in both single and two-gang assemblies
- Pushbutton, selector switches and pilot light bodies are copper-free aluminum
- Operating shaft in both pushbuttons and selector switches are stainless steel
- Miniature and standard size pushbuttons. (miniature 3/4" overall diameter, standard 1 3/8" overall diameter)

Factory sealed devices eliminate the need for external sealing. The difference is the use of a sealing plate between the arcing device and the junction box. The sealing plate confines ignited gases, vapors, flames, or dust to the arcing device chamber, preventing them from traveling through the conduit system. Accurately ground flanges on both sides of the sealing plate provide flame-tight joints. Factory poured seals around the wiring pigtails ensure safe sealing.

### Contact Specifications

All contacts are break before make. Replacement contacts are not available for any of our Killark hazardous duty controls.

AC Ratings				
Current	120 VAC	240 VAC	480 VAC	600 VAC
Inrush	60	30	15	12
Breaking	6	3	1.5	1.2
Carrying	10	10	10	10

DC Ratings (Max. Amps)		
Current	125 VDC	250 VDC
Inrush	0.55	0.275
Breaking	0.55	0.275
Carrying	2.50	2.5

FXCS Specifications	
Dielectric Strength	2.5 kV (1 minute)
Electrical Endurance	5 million operations at rated load
Operating Frequency	3,000 per hour
Mechanical Endurance	Momentary: $5 \times 10^6$ Push-pull and selector: $2 \times 10^6$
LED Consumption	4-6 mA at 110 to 130 VAC/VDC
Wire Leads	6.5 inches, 18 AWG
Operating Temperature	-4 to 104°F (-20 to 40°C)
Device Bodies and Covers Materials	Copper-free Aluminum
Cover Bolts Material	1/4-20 x 1.10 inch Stainless Steel
Cover Tightening	After tightly attaching cover to device box, check with a 0.0015 inch feeler gauge; it should enter gap more than 1/8 inch.

# KILLARK FXCS Series Factory Sealed Control Station Cover Assemblies



Single Pushbutton



Double Pushbutton



Pilot Light

## Features

These pushbutton assemblies include the cover and the pushbutton device. An FXB splice/device box is required.

## Listings

- UL Listed; File E53360
- Class I, Div. 1 & 2, Groups C, D
- Class II, Div. 1 & 2, Groups E, F, G
- Class III
- NEMA 3, 7 (C, D) 9 (E, F, G)
- CSA Certified; File LR11714
- Class I, Zones 1 & 2, Groups IIB, IIA



FXCS Momentary Contact Single Pushbutton						
Part Number (cover included)	Price	Drawing Link	Description	Diagram	Pushbutton Color	Legend Plate Marking*
<a href="#">FXCS-0B1</a>		<a href="#">PDF</a>	1 N.O. momentary operator		Green	"START"
<a href="#">FXCS-0B2</a>		<a href="#">PDF</a>	1 N.C. momentary operator		Red	"STOP"
<a href="#">FXCS-0B3</a>		<a href="#">PDF</a>	1 N.O. / 1 N.C. momentary operator		Black	Blank plate

FXCS Momentary Contact Double Pushbutton						
Part Number (cover included)	Price	Drawing Link	Description	Diagram	Button Color	Legend Plate Marking*
<a href="#">FXCS-0B4</a>		<a href="#">PDF</a>	Green operator has 1 N.O. momentary contact and red operator has 1 N.C. momentary contact		Green / Red	"START STOP"
<a href="#">FXCS-0B4U</a>		<a href="#">PDF</a>	Each operator has 1 N.O. and 1 N.C. momentary contact		Green / Red	"START STOP"
<a href="#">FXCS-0B5</a>		<a href="#">PDF</a>	Each operator has 1 N.O. momentary contact		Green / Green	"START START"
<a href="#">FXCS-0B7</a>		<a href="#">PDF</a>	Each operator has 1 N.O. and 1 N.C. momentary contact		Black / Black	Two blank plates

FXCS Pilot Light							
Part Number (cover included)	Price	Drawing Link	Description	Diagram	LED Voltage	Lens Color	Legend Plate Marking*
<a href="#">FXCS-0B24ALD</a>		<a href="#">PDF</a>	Single pilot light		110 VAC/VDC	Amber	Blank plate
<a href="#">FXCS-0B24CLD</a>		<a href="#">PDF</a>	Single pilot light		110 VAC/VDC	Clear	Blank plate
<a href="#">FXCS-0B24GLD</a>		<a href="#">PDF</a>	Single pilot light		110 VAC/VDC	Green	Blank plate
<a href="#">FXCS-0B24RLD</a>		<a href="#">PDF</a>	Single pilot light		110 VAC/VDC	Red	Blank plate

\* We also offer a large selection of optional legend plates. See accessories later in this section.

# KILLARK FXCS Series Factory Sealed Control Station Cover Assemblies



Double Pilot Light



Pilot Light / Pushbutton



Pilot Light / Two Mini Pushbutton



Maintained Pushbutton

## Listings

- UL Listed; File E53360
- Class I, Div. 1 & 2, Groups C, D
- Class II, Div. 1 & 2, Groups E, F, G
- Class III
- NEMA 3, 7 (C, D) 9 (E, F, G)
- CSA Certified; File LR11714
- Class I, Zones 1 & 2, Groups IIB, IIA



FXCS Double Pilot Light							
Part Number (cover included)	Price	Drawing Link	Description	Diagram	LED Voltage	Lens Colors	Legend Plate Marking*
<a href="#">FXCS-0B30ALD</a>		<a href="#">PDF</a>	Two pilot lights		110 VAC/VDC	Amber / Amber	Two blank plates
<a href="#">FXCS-0B30CLD</a>		<a href="#">PDF</a>	Two pilot lights		110 VAC/VDC	Clear / Clear	Two blank plates
<a href="#">FXCS-0B30GLD</a>		<a href="#">PDF</a>	Two pilot lights		110 VAC/VDC	Green / Green	Two blank plates
<a href="#">FXCS-0B30RLD</a>		<a href="#">PDF</a>	Two pilot lights		110 VAC/VDC	Red / Red	Two blank plates
<a href="#">FXCS-0B30RLD-GLD</a>		<a href="#">PDF</a>	Two pilot lights		110 VAC/VDC	Red / Green	Two blank plates

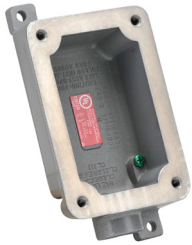
FXCS Momentary Contact Pushbutton and Pilot Light									
Part Number (cover included)	Price	Drawing Link	Description	Diagram	LED Voltage	Pushbutton Color	Lens Color	Legend Plate Marking*	
<a href="#">FXCS-0B13-CD</a>		<a href="#">PDF</a>	1 N.C. momentary operator and pilot light		110 VAC/VDC	Red	Clear	Pushbutton: "STOP" Pilot light: Blank plate	
<a href="#">FXCS-0B13-OD</a>		<a href="#">PDF</a>	1 N.O. momentary operator and pilot light		110 VAC/VDC	Green	Red	Pushbutton: "START" Pilot light: Blank plate	
<a href="#">FXCS-0B13-UD</a>		<a href="#">PDF</a>	1 N.O. / 1 N.C. momentary operator and pilot light		110 VAC/VDC	Black	Red	Two blank plates	

FXCS Two Mini Momentary Contact Pushbuttons and Pilot Light									
Part Number (cover included)	Price	Drawing Link	Description	Diagram	LED Voltage	Pushbutton Colors	Lens Color	Legend Plate Marking*	
<a href="#">FXCS-0A15D</a>		<a href="#">PDF</a>	Mini red operator with 1 N.C. momentary contact and mini green operator with 1 N.O. momentary contact, and pilot light		110 VAC/VDC	Green Red	Red	N.O. Pushbutton: "START" N.C. Pushbutton: "STOP" Pilot light: Blank plate	

FXCS Maintained Contact Push-Pull Mushroom Pushbutton						
Part Number (cover included)	Price	Drawing Link	Description	Diagram	Pushbutton Color	Legend Plate Marking*
<a href="#">FXCS-0MMG3</a>		<a href="#">PDF</a>	1 N.O. / 1 N.C. push-pull maintained		Green	Three 2-sided legend plates included: "START / STOP"; "EMERGENCY STOP / RESET"; Blank plate / "RESET"
<a href="#">FXCS-0MMR3</a>		<a href="#">PDF</a>	1 N.O. / 1 N.C. push-pull maintained		Red	Three 2-sided legend plates included: "START / STOP"; "EMERGENCY STOP / RESET"; Blank plate / "RESET"
<a href="#">FXCS-0MMK3</a>		<a href="#">PDF</a>	1 N.O. / 1 N.C. push-pull maintained		Black	Three 2-sided legend plates included: "START / STOP"; "EMERGENCY STOP / RESET"; Blank plate / "RESET"

\* We also offer a large selection of optional legend plates. See accessories later in this section.

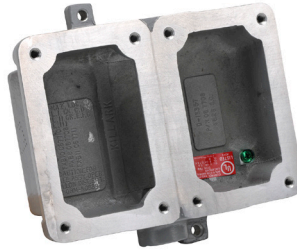
# KILLARK FXB Series Factory Sealed Splice/Device Boxes for FXCS Series Cover Assemblies



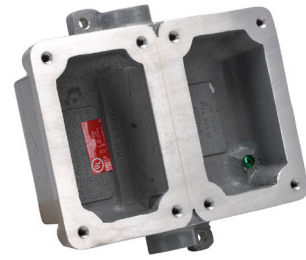
**FXB-2**  
Dead End



**FXB-5**  
Feed Through



**FXB-8**  
Double Gang Dead End



**FXB-11**  
Double Gang Feed Through

## Features

### Splice Boxes

The FXB series of splice boxes are designed for use with the FXCS series cover sub-assemblies.

## Listings

- UL Listed; File E53360
- Class I, Div. 1 & 2, Groups C, D
- Class II, Div. 1 & 2, Groups E, F, G
- Class III
- NEMA 3, 7 (C, D) 9 (E, F, G)
- CSA Certified; File LR11714
- Class I, Zones 1 & 2, Groups IIB, IIA



FXB Splice/Device Box Selection and Dimensions				
Part Number	Price	Drawing Link	Description	NPT Hub Size (inches)
<a href="#">FXB-1</a>		<a href="#">PDF</a>	Single gang / Dead-end	1/2
<a href="#">FXB-2</a>		<a href="#">PDF</a>	Single gang / Dead-end	3/4
<a href="#">FXB-3</a>		<a href="#">PDF</a>	Single gang / Dead-end	1
<a href="#">FXB-4</a>		<a href="#">PDF</a>	Single gang / Feed-through	1/2
<a href="#">FXB-5</a>		<a href="#">PDF</a>	Single gang / Feed-through	3/4
<a href="#">FXB-6</a>		<a href="#">PDF</a>	Single gang / Feed-through	1
<a href="#">FXB-7</a>		<a href="#">PDF</a>	Double gang / Dead-end	1/2
<a href="#">FXB-8</a>		<a href="#">PDF</a>	Double gang / Dead-end	3/4
<a href="#">FXB-9</a>		<a href="#">PDF</a>	Double gang / Dead-end	1
<a href="#">FXB-10</a>		<a href="#">PDF</a>	Double gang / Feed-through	1/2
<a href="#">FXB-11</a>		<a href="#">PDF</a>	Double gang / Feed-through	3/4
<a href="#">FXB-12</a>		<a href="#">PDF</a>	Double gang / Feed-through	1