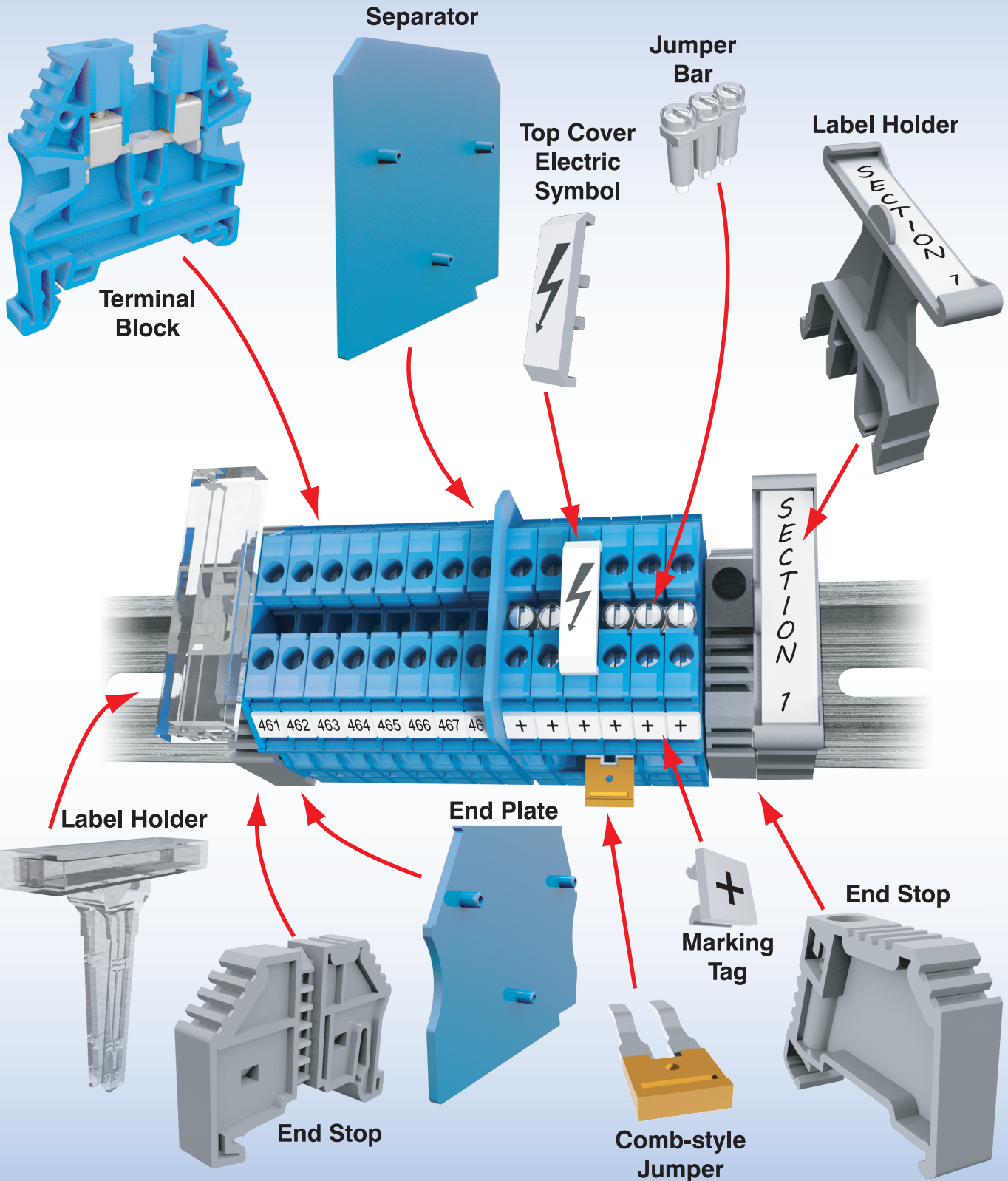




KONNECT-IT[®] TERMINAL BLOCKS

ACCESSORIES



Multi-Pole Jumper Bars

Multi-pole jumper bars provide terminal block connection flexibility. Screw-down connection jumpers feature all-metal construction and can be installed quickly just by tightening the screws. Screwless comb-style jumpers are also available. See next page for the larger J1/0 jumper installation instructions.

KN-10J12



KN-2JM12

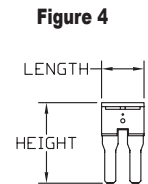
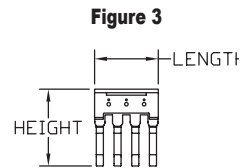
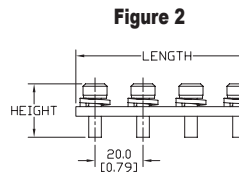
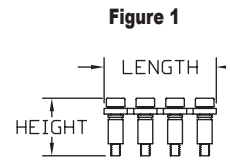


KN-2JCC8



Multi-Pole Jumper Bars Ordering Information

Type	Part Number	Price	Qty	Number of Poles	Ratings	Dimensions - mm [in]			Fig.	Works With
						Height	Length	Width		
Screw-down connection	KN-2J12		25	2	750V 24A	15.8 [0.62]	10.1 [0.40]	4.4 [0.17]	1	KN-T12 KN-D12 KN-D12X KN-D12DR1 KN-D12LED
	KN-3J12		20	3	750V 24A		15.3 [0.60]			
	KN-4J12		15	4	750V 24A		20.4 [0.80]			
	KN-10J12		5	10	750V 24A		51.1 [2.01]			
	KN-2J10		25	2	750V 32A	15.5 [0.61]	10.8 [0.43]	6.0 [0.24]	1	KN-T10 KN-D10 KN-D10X KN-D10DR1 KN-D10LED
	KN-3J10		20	3	750V 32A		17.0 [0.67]			
	KN-4J10		15	4	750V 32A		23.0 [0.91]			
	KN-10J10		5	10	750V 32A		59.0 [2.32]			
	KN-2J8		25	2	630V 41A	15.5 [0.61]	14.3 [0.56]	6.0 [0.24]	1	KN-T8
	KN-3J8		20	3	630V 41A		22.3 [0.88]			
	KN-4J8		15	4	630V 41A		30.3 [1.19]			
	KN-10J8		5	10	630V 41A		78.3 [3.08]			
	KN-2J6		25	2	630V 57A	15.5 [0.61]	18.0 [0.71]	6.0 [0.24]	1	KN-T6
	KN-3J6		20	3	630V 57A		28.0 [1.10]			
	KN-4J6		15	4	630V 57A		38.0 [1.50]			
	KN-10J6		5	10	630V 57A		98.0 [3.86]			
	KN-2J4		25	2	750V 76A	23.0 [0.91]	21.0 [0.83]	6.0 [0.24]	1	KN-T4
	KN-3J4		20	3	750V 76A		33.0 [1.30]			
	KN-4J4		15	4	750V 76A		45.0 [1.77]			
	KN-10J4		5	10	750V 76A		117.0 [4.61]			
KN-2J2		25	2	750V 125A	21.0 [0.83]	29.0 [1.14]	8.0 [0.31]	1	KN-T2	
KN-3J2		20	3	750V 125A		45.0 [1.77]				
KN-4J2		15	4	750V 125A		61.0 [2.40]				
KN-10J2		5	10	750V 125A		157.0 [6.18]				
KN-2J1/0		5	2	1000V 150A	22.3 [0.88]	36.0 [1.42]	12.0 [0.47]	2	KN-T1/0	
KN-3J1/0		5	3	1000V 150A		56.0 [2.20]				
KN-4J1/0		5	4	1000V 150A		76.0 [2.99]				
KN-2JTL12		25	2	440V 24A	15.5 [0.61]	11.0 [0.43]	4.4 [0.17]	1	KN-DG12 KN-TG12 KN-TL14 KN-TL14S KN-TL14SLN KN-TL14SP	
KN-3JTL12		20	3	440V 24A		17.0 [0.67]				
KN-4JTL12		15	4	440V 24A		23.0 [0.91]				
KN-10JTL12		5	10	440V 24A		59.0 [2.32]				
Push-in Connection	KN-2JM10		25	2	750V 32A	23.2 [0.91]	9.5 [0.37]	2.7 [0.11]	3	KN-M10 KN-KBD10
	KN-3JM10		20	3	750V 32A		15.5 [0.61]			
	KN-4JM10		15	4	750V 32A		21.5 [0.85]			
	KN-10JM10		5	10	750V 32A		57.5 [2.26]			
	KN-2JM12		25	2	750V 24A	21.7 [0.85]	8.0 [0.31]	2.3 [0.09]	3	KN-M12 KN-T12SP4
	KN-3JM12		20	3	750V 24A		13.0 [0.51]			
	KN-4JM12		15	4	750V 24A		18.0 [0.71]			
KN-10JM12		5	10	750V 24A	48.0 [1.89]					
Screwless Comb-style	KN-2JCC12		25	2	750V 24A	23.7 [0.93]	8.0 [0.31]	2.8 [0.11]	4	KN-T12
	KN-2JCC10		25		750V 32A	24.7 [0.97]	9.5 [0.37]			KN-T10
	KN-2JCC8		25		630V 41A	25.6 [1.01]	13.5 [0.53]			KN-T8
	KN-2JCC6		25		630V 57A	26.7 [1.05]	16.0 [0.63]			KN-T6

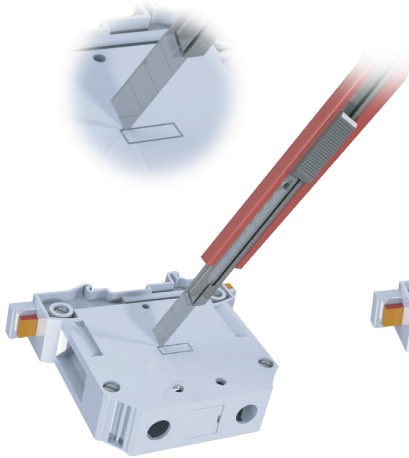


Please visit our website
for complete engineering drawings.

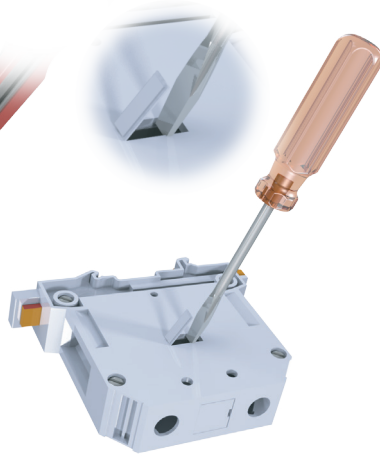
Screwless Comb-Style jumpers are designed to be connected under the conductor clamp.

J1/0 Jumper Installation Instructions

Score Knockout Panel



Remove Knockout Panel



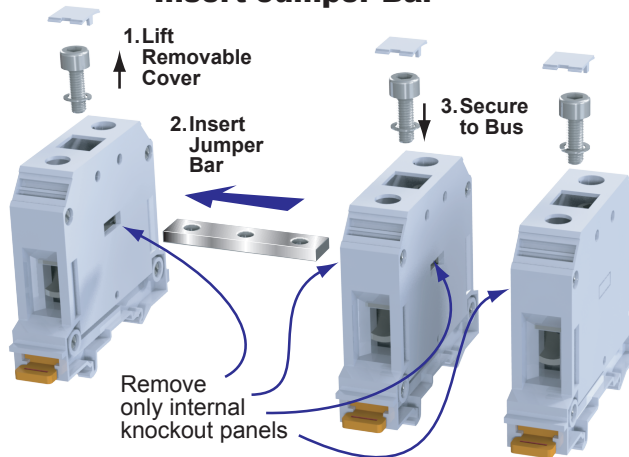
Applicable to terminal blocks

- KN-T1/0GRY
- KN-T1/0GRY-10
- KN-T1/0BLU
- KN-T1/0BLU-10

Applicable to jumpers

- KN-2J1/0
- KN-3J1/0
- KN-4J1/0

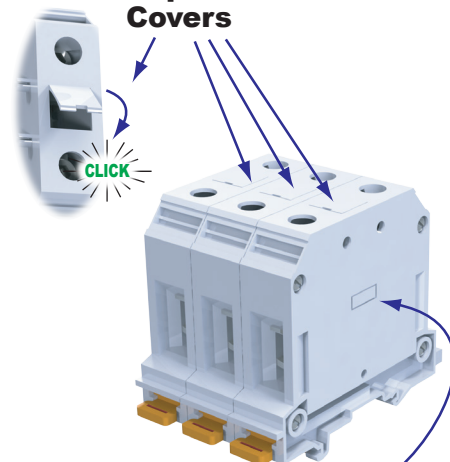
Insert Jumper Bar



IMPORTANT! To avoid shock hazard

- Leave external knockout panels intact
- Install removable covers into original position.

Replace Removable Covers

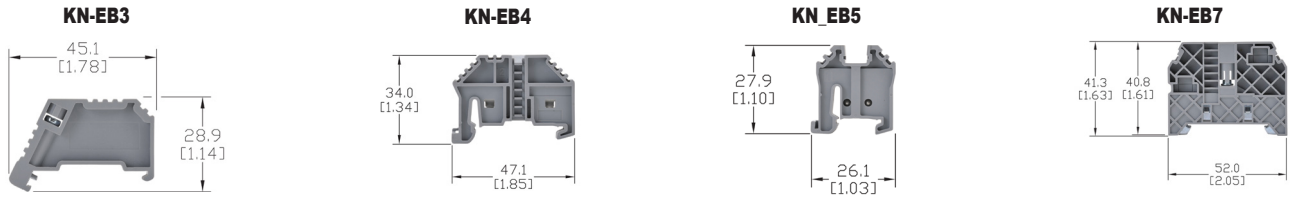


To avoid exposure to live circuit, do not remove external knockout panels

End Brackets

End brackets prevent terminal blocks and other DIN rail mount components and devices from moving laterally on the rail. They are constructed from polyamide 66 and available in configurations for 35mm and 15mm DIN rails.

Dimensions mm [in]



End Brackets Ordering Information

Gray End Brackets	KN-EB3	100/pkg	KN-EB4	100/pkg	KN-EB5	100/pkg	KN-EB7	50/pkg
	KN-EB3-10	10/pkg	KN-EB4-10	10/pkg	KN-EB5-10	10/pkg	KN-EB7-10	10/pkg

Technical Specifications

Description	Screw-type end bracket	Screwless end bracket	Screwless end bracket	Screw-type end bracket
Bracket Width	8 mm [0.31 in]	8 mm [0.31 in]	8 mm [0.31 in]	10 mm [0.39 in]
DIN Rail Width	35 mm	35 mm	15 mm	35 mm
Material	Housing: Polyamide 66 / Clamping Connector: Zinc Plated Steel			

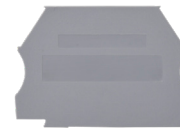
End Bracket Accessories

Label Holder	—	—	—	KN-MA-1	25/pkg	—	—	—	KN-MA-2	50/pkg
Marking Tags	—	—	—	KN-MA-1-10	10/pkg	—	—	—	KN-MA-2-10	10/pkg
KN-L5 Series or KN-L6P5 Series										

End Covers

End covers are used to cover the open side of sectional DIN rail mount terminal blocks. They should be used at the end of an assembly of identical terminal blocks or whenever there is a change in the physical size of the terminal block.

Material: Polyamide 66



End Covers Ordering Information

Part Number	Color	Dimensions H x L x W mm [in]	Suitable for	Qty	Price	Part Number	Color	Dimensions H x L x W mm [in]	Suitable for	Qty	Price
KN-ECT6GRY	gray	34.0x42.7x1.3 [1.34x1.68x0.05]	KN-T12 KN-T10 KN-T8 KN-T6	100		KN-ECDORG	orange	48.2x63.2x1.3 [1.90x2.49x0.05]	KN-D10 KN-D12	10	
KN-ECT6GRY-25	gray			25		KN-ECDRED	red				
KN-ECT6BLU	blue					KN-ECDYEL	yellow				
KN-ECT6BLK	black					KN-ECTL	gray	54.7x87.1x1.3 [2.15x3.43x0.05]	KN-TL14	10	
KN-ECT6BRN	brown					KN-ECTLS	gray	54.7x72.8x1.2 [2.15x2.87x0.05]	KN-TL14S	10	
KN-ECT6GRN	green					KN-ECDG12	gray	48.0x71.4x1.2 [1.89x2.81x0.05]	KN-DG12	10	
KN-ECT6ORG	orange					KN-ECTG12	gray	62.5x87.5x1.2 [2.46x3.44x0.05]	KN-TG12	10	
KN-ECT6RED	red					KN-ECMGRY	gray	28.1x27.0x3.0 [1.11x1.06x0.12]	KN-M12 KN-M10	100	
KN-ECT6WHT	white					KN-ECMGRY-10	gray				
KN-ECT6YEL	yellow					KN-ECMBLU	blue				
KN-ECT4GRY	gray	45.7x52.8x1.2 [1.80x2.08x0.05]	KN-T4	25		KN-ECMGRN	green/ yellow	28.1x27.0x3.0 [1.11x1.06x0.12]	KN-MG12 KN-MG10	10	
KN-ECT4BLU	blue			10		KN-ECG12SP4	green/ yellow	39.7x57.1x1.2 [1.56x2.25x0.05]	KN-G12SP4	10	
KN-ECDGRY	gray	48.2x63.2x1.3 [1.90x2.49x0.05]	KN-D10 KN-D12	25		KN-ECT12SP4	gray	39.7x57.1x1.2 [1.56x2.25x0.05]	KN-T12SP4	25	
KN-ECDBLU	blue			10		KN-ECF10	gray	27.3x59.6x1.2 [1.07x2.35x0.05]	KN-F10	25	
KN-ECDBLK	black				KN-ECKBD	gray	37.1x53.5x1.2 [1.46x2.11x0.05]	KN-KDB10	10		
KN-ECDGRN	green										

Separators

Separators are used to segment banks of terminal blocks. Allows you to maintain a single row of terminal blocks, but have separate power source clusters.

Separators Ordering Information							
Part Number	Color	Works With	Dimensions - mm [in]			Qty	Price
			Height	Length	Thickness		
KN-ST1GRY	Gray	KN-T12 KN-T10 KN-T8 KN-T6	39.0 [1.54]	42.5 [1.67]	1.2 [0.05]	10	
KN-ST1BLU	Blue						
KN-ST1BLK	Black						
KN-ST1BRN	Brown						
KN-ST1GRN	Green						
KN-ST1ORG	Orange						
KN-ST1RED	Red						
KN-ST1WHT	White						
KN-ST1YEL	Yellow						
KN-ST2GRY	Gray	KN-T4	52.5 [2.07]	50.5 [1.99]	1.5 [0.06]	25	
KN-ST2BLU	Blue						
KN-ST3GRY	Gray	KN-T2	62.6 [2.46]	53.1 [2.09]	1.5 [0.06]	10	
KN-ST3BLU	Blue						

KN-ST1GRY



Top Covers and Label Holders

Top Covers and Label Holders Ordering Information							
Part Number	Description	Works With	Dimensions - mm [in]			Qty	Price
			Height	Length	Width		
KN-TC-1	Top cover for Konnect-It terminal block, blank, white	KN-T12 KN-T10 KN-T8 KN-T6	6.8 [0.27]	29.0 [1.14]	5.8 [0.23]	25	
KN-TC-1S	Top cover for Konnect-It terminal block, printed electric symbol, white					25	
KN-TC-2	Top cover for Konnect-It terminal block, blank, white					25	
KN-TC-2S	Top cover for Konnect-It terminal block, printed electric symbol, white	KN-T4 KN-T2	7.3 [0.29]	35.8 [1.41]	9.0 [0.35]	25	
KN-MA-1	Label holder for terminal block group. Label media not included. Adhesive label: Apply on top.	KN-EB4	46.2 [1.82]	46.0 [1.81]	11.4 [0.45]	25	
KN-MA-1-10	Max label dimensions: 7 x 44 mm (0.28 x 1.73 in).					10	
KN-MA-2	Label holder for terminal block group. Label media not included. Adhesive label: Apply on top.	KN-EB7	37.5 [1.48]	46.2 [1.82]	9.5 [0.37]	50	
KN-MA-2-10	Max label dimensions: 7 x 44 mm (0.28 x 1.73 in).					10	
KN-MA-3	Top mounting marking tag adapter for terminal block. Holds up to (4) L5x5 tags	KN-T4 KN-T2	9.3 [0.36]	36.0 [1.42]	9.0 [0.35]	25	
KN-MA-4	Top mounting marking tag adapter for terminal block. Holds up to (4) L5x5 tags	KN-T12 KN-T10 KN-T8 KN-T6	9.0 [0.35]	29.0 [1.14]	5.7 [0.22]	25	
KN-MA-5	Label holder for terminal block group. Label media included.	Attaches to any 35mm DIN rail	46.4 [1.83]	44.5 [1.75]	10.0 [0.39]	50	
KN-MA-5-25	Max label dimensions: 10 x 38mm (0.39 x 1.50 in). Thickness 0.30 mm (0.01 in)					25	

KN-MA-1



KN-MA-2



KN-MA-5



KN-TC-1 / KN-TC-2



KN-TC-1S / KN-TC-2S



KN-MA-3



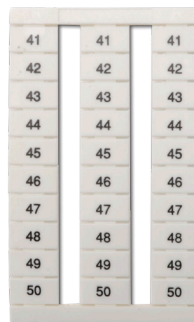
KN-MA-4



Marking Tags 6.5 x 10mm

Use with any KONNECT-IT series terminal blocks 6.5mm or wider.

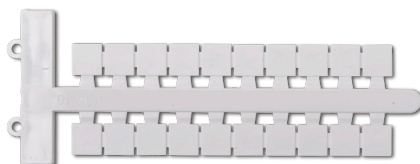
6.5 x 10mm Marking Tags Ordering Information			
Part Number	Description	Qty	Price
<u>KN-L6P5-BLNK-250</u>	Blank	250	
<u>KN-L6P5-1-10-250</u>	Numbered 1-10	250	
<u>KN-L6P5-11-20-250</u>	Numbered 11-20	250	
<u>KN-L6P5-21-30-250</u>	Numbered 21-30	250	
<u>KN-L6P5-31-40-250</u>	Numbered 31-40	250	
<u>KN-L6P5-41-50-250</u>	Numbered 41-50	250	
<u>KN-L6P5-51-60-250</u>	Numbered 51-60	250	
<u>KN-L6P5-61-70-250</u>	Numbered 61-70	250	
<u>KN-L6P5-71-80-250</u>	Numbered 71-80	250	
<u>KN-L6P5-81-90-250</u>	Numbered 81-90	250	
<u>KN-L6P5-91-100-250</u>	Numbered 91-100	250	
<u>KN-L6P5-BLNK</u>	Blank	500	
<u>KN-L6P5-1-10</u>	Numbered 1-10	500	
<u>KN-L6P5-11-20</u>	Numbered 11-20	500	
<u>KN-L6P5-21-30</u>	Numbered 21-30	500	
<u>KN-L6P5-31-40</u>	Numbered 31-40	500	
<u>KN-L6P5-41-50</u>	Numbered 41-50	500	
<u>KN-L6P5-51-60</u>	Numbered 51-60	500	
<u>KN-L6P5-61-70</u>	Numbered 61-70	500	
<u>KN-L6P5-71-80</u>	Numbered 71-80	500	
<u>KN-L6P5-81-90</u>	Numbered 81-90	500	
<u>KN-L6P5-91-100</u>	Numbered 91-100	500	



Marking Tags 5 x 10mm, 6 x 10mm, 10 x 10mm

Marking Tags Ordering Information			
Part Number*	Description	Qty	Price
<u>KN-L5X-BLNK-220</u>	Blank marking tag, 5x10mm, use with any Connect-It terminal block series	220	
<u>KN-L6X-BLNK-180</u>	Blank marking tag, 6x10mm, use with any Connect-It terminal block 6mm or wider	180	
<u>KN-L10X-BLNK-100</u>	Blank marking tag, 10x10mm, use with any Connect-It terminal block 10mm or wider	100	
<u>KN-L5X-BLNK</u>	Blank marking tag, 5x10mm, use with any Connect-It terminal block series	440	
<u>KN-L6X-BLNK</u>	Blank marking tag, 6x10mm, use with any Connect-It terminal block 6mm or wider	360	
<u>KN-L10X-BLNK</u>	Blank marking tag, 10x10mm, use with any Connect-It terminal block 10mm or wider	200	

*Does not fit any KN-T1/0 or KN-G1/0 series block



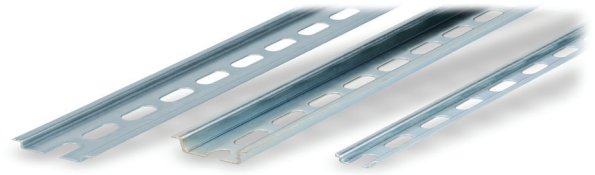
Steel DIN Rails Features

35mm wide

- Available in 1-meter lengths
- 7.5 mm-high rails primarily used to mount terminal blocks, relays, timers and small PLCs such as the DL05, DL06, DL105, DL205, CLICK, and Productivity3000
- 15mm-high rails for mounting larger and heavier components such as contactors and larger PLCs

15mm wide

- Available in 1-meter lengths
- DN-R15S1 exclusively for mounting mini terminal blocks such as the DN-M10-A



Steel DIN Rails Specifications									
	Part Number	Qty	Price	Part Number	Qty	Price	Part Number	Qty	Price
DIN Rail	<u>DN-R35S1</u>	10		<u>DN-R35HS1</u>	10		<u>DN-R15S1</u>	10	
	<u>DN-R35S1-2</u>	2		<u>DN-R35HS1-2</u>	2		<u>DN-R15S1-2</u>	2	
Description	DINnector DIN rail, slotted, 35mm, 7.5mm height, 1m length, plated steel. Package of 10.			DINnector DIN rail, slotted, 35mm, 15mm height, 1m length, plated steel. Package of 10.			DINnector DIN rail, slotted, 15mm, 5.5mm height, 1m length, plated steel. Package of 2.		
Plating	Zinc-plated and chromated								
International Standards	EN 60715, RoHs								
Suggested Mounting Screw Type	M6			M6			M4		

Aluminum DIN Rail Features

35mm wide

- Non-anodized finish
- Zinc plating and passivation (minimum thickness 6 microns)
- Lightweight, easy to cut and deburr
- Terminal blocks only
- Maximum mounting screw #10-32 or M5
- Available in 1-meter lengths

35mm wide raised

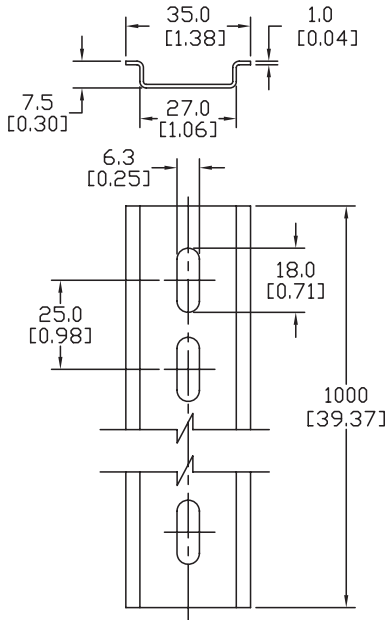
- Non-anodized finish
- Zinc plating and passivation (minimum thickness 6 microns)
- Enables users to raise terminal blocks 2¼" above the back panel
- Terminal blocks only
- Available in 1-meter lengths
- Bushing or grommet recommended for wire access hole (example Heyco UB-875 not sold by ADC)



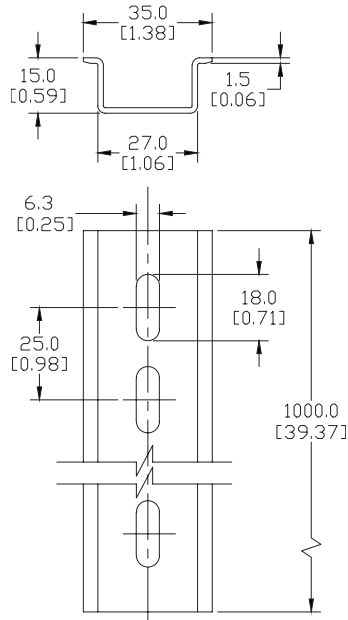
Aluminum DIN Rails Specifications						
	Part Number	Qty	Price	Part Number	Qty	Price
DIN Rail	<u>DN-R35SAL1</u>	10		<u>DN-R35SAL2-2</u>	2	
	<u>DN-R35SAL1-2</u>	2				
Description	DINnector DIN rail, slotted, 35mm, 10mm height, 1m length, aluminum. Package of 10.			DINnector DIN rail, slotted, 2in raised 35mm, 7.5mm height, 1m length, aluminum. Package of 2.		
Plating	Galvanic zinc plating, non-anodized finish					
International Standards	DIN 50960, RoHs					
Suggested Mounting Screw Type	#10-32 or M5					

Dimensions
mm [inches]

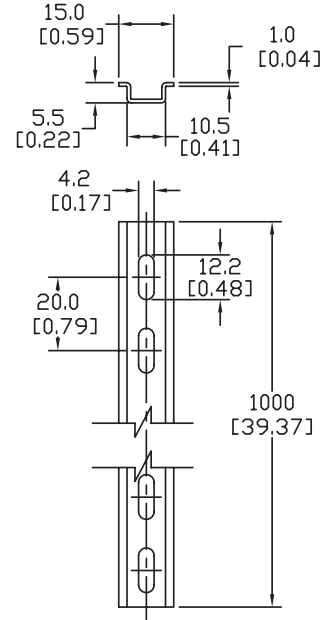
DN-R35S1



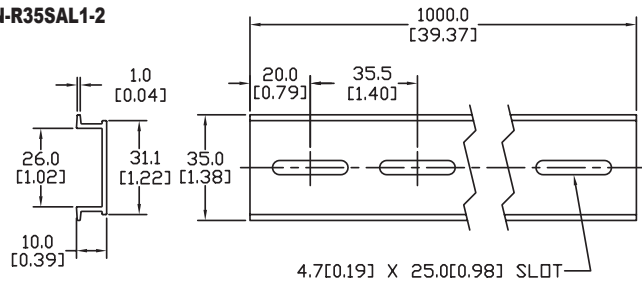
DN-R35HS1



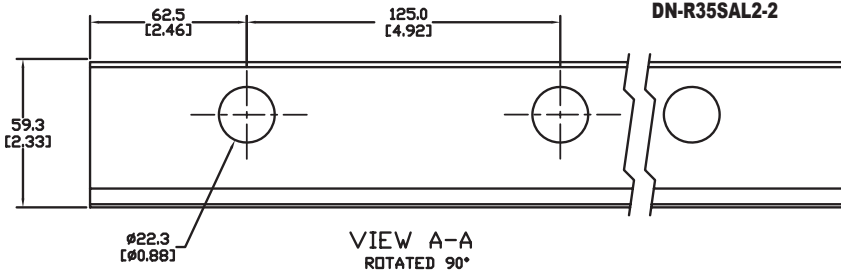
DN-R15S1



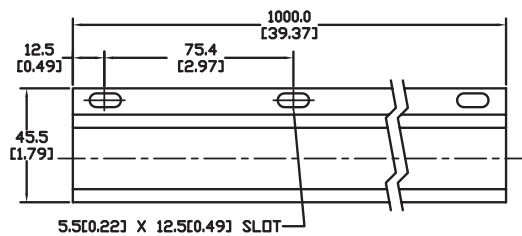
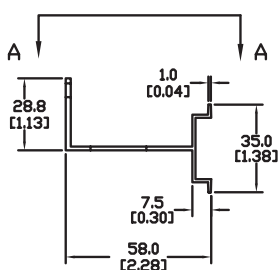
**DN-R35SAL1
DN-R35SAL1-2**



DN-R35SAL2-2



VIEW A-A
ROTATED 90°



See our website: for
complete engineering drawings

DIN rail support brackets

- Angled support brackets raise and tilt mounting rails 30 degrees from mounting surface for easier wiring
- DN-ASB1 plated steel support bracket
- DN-ASB2-10 cold-rolled steel treated with galvanic zinc plating and passivation

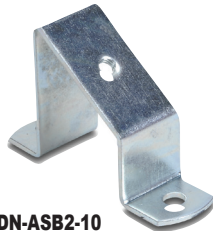
DIN rail mounting clips

- Snap small devices not made for mounting onto 35mm DIN rails
- Zinc plated steel

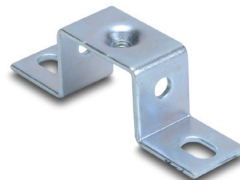
DIN Rail Support Brackets and Mounting Clips			
Part Number	Description	Qty	Price
<u>DN-ASB1</u>	30° angled DIN rail support bracket (M6-1.0 screws not included)	50	
<u>DN-ASB2-10</u>	30° angled DIN rail support bracket (M6-1.0 screws included)	10	
<u>DN-SSB25-10</u>	1" (25 mm) DIN rail support bracket (M6-1.0 screws included)	10	
<u>DN-SSB50-10</u>	2" (50 mm) DIN rail support bracket (M6-1.0 screws included)	10	
<u>DN-SSB70-10</u>	2.75" (70 mm) DIN rail support bracket (M6-1.0 screws included)	10	
<u>DN-SSB90-10</u>	3.5" (90 mm) DIN rail support bracket (M6-1.0 screws included)	10	
<u>DN-CLIP-FM4</u>	DIN rail mounting clip with M4 x 0.7 mm threaded hole (Screws not included)	40	
<u>DN-CLIP-FM4-5</u>		5	
<u>DN-CLIP-FM5</u>	DIN rail mounting clip with M5 x 0.8 mm threaded hole (Screws not included)	40	
<u>DN-CLIP-FM5-5</u>		5	



DN-ASB1



DN-ASB2-10



DN-SSB25-10



DN-SSB50-10



DN-SSB70-10



DN-SSB90-10

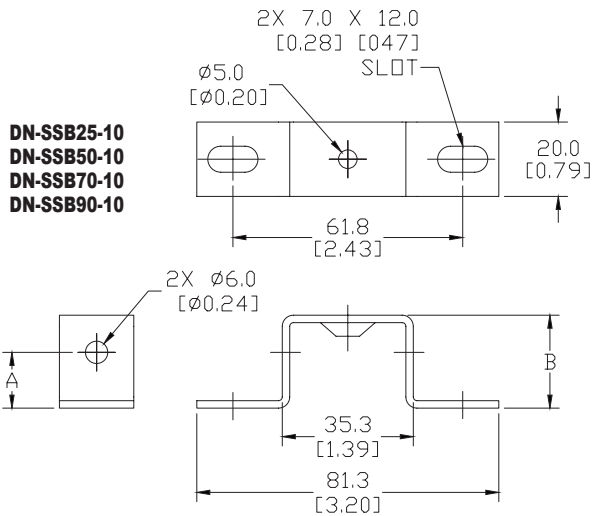
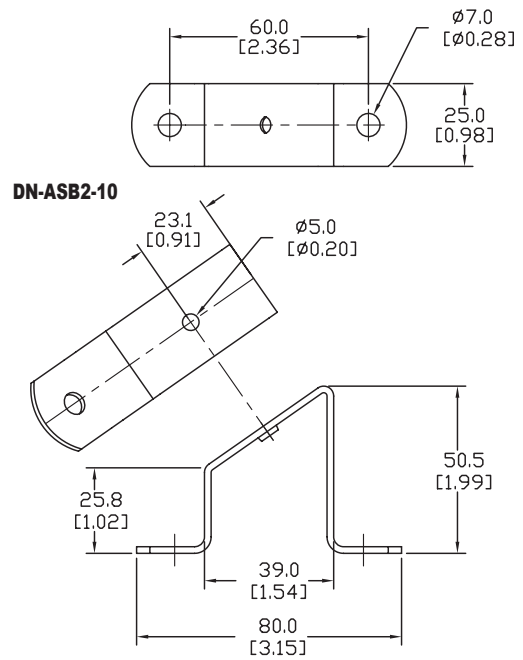
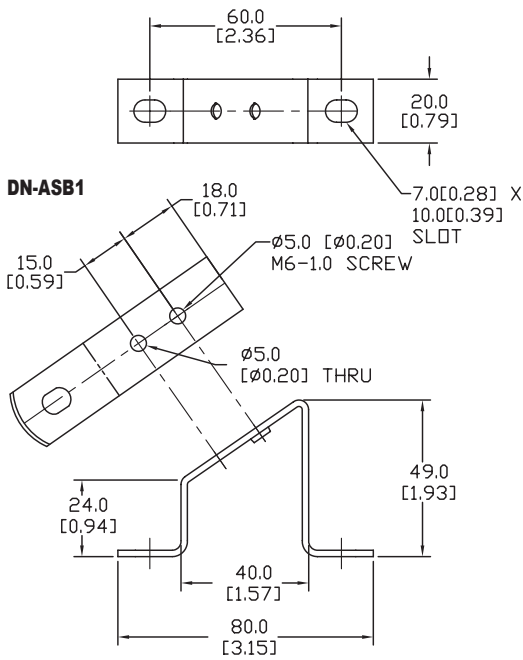


**DN-CLIP-FM4
DN-CLIP-FM4-5**



**DN-CLIP-FM5
DN-CLIP-FM5-5**

Dimensions
mm [inches]



DIN Rail Support Brackets		
Part Number	DIM A mm [inches]	DIM B mm [inches]
DN-SSB25-10	15.0 [0.59]	25.0 [0.98]
DN-SSB50-10	40.0 [1.58]	50.0 [1.97]
DN-SSB70-10	60.0 [2.36]	70.0 [2.76]
DN-SSB90-10	80.0 [3.15]	90.0 [3.54]

See our website: for complete engineering drawings

