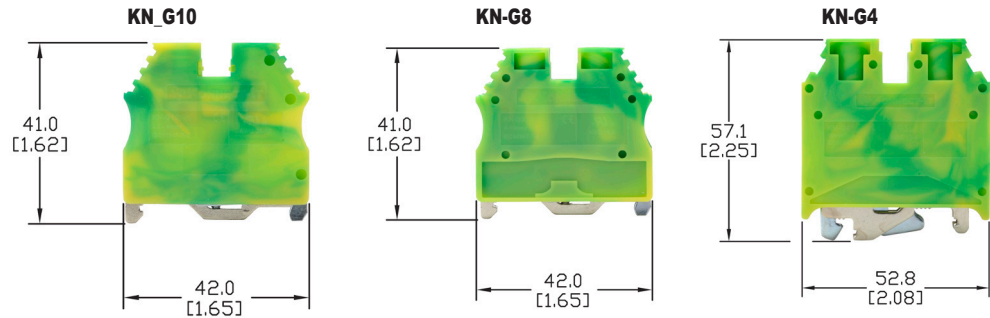


Dimensions: mm [in]

- Screw connection terminal
- PE screw connection  
DIN Rail
- UL E179129  
(For copper wire only.  
One conductor in terminal only.)
- CE (EN 60947-7-1/  
EN 60947-7-2)
- VDE (IEC 60947-7-1)



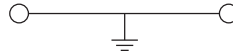
See our website: for complete engineering drawings

Ordering Information									
Color	Part Number	Qty	Price	Part Number	Qty	Price	Part Number	Qty	Price
Yellow/ Green	<a href="#">KN-G10</a>	50		<a href="#">KN-G8</a>	25		<a href="#">KN-G4</a>	50	
	<a href="#">KN-G10-10</a>	10		<a href="#">KN-G8-10</a>	10		<a href="#">KN-G4-10</a>	10	

Technical Specifications									
Model	KN-G10			KN-G8			KN-G4		
<b>Width</b>	6mm [0.24 in]			10mm [0.39 in]			12mm [0.47 in]		
<b>Stripping Length</b>	10mm [0.39 in]			12mm [0.47 in]			12mm [0.47 in]		
<b>Tightening Torque</b>	0.5 N·m [4.4 lb-in]			1.2 N·m [10.6 lb-in]			1.2 N·m [10.6 lb-in]		
<b>Density</b>	166/m [50 pcs/ft]			100/m [30 pcs/ft]			83/m [25 pcs/ft]		
<b>UL/CSA Approval</b>	—	—	26-10 AWG	—	—	16-8 AWG	—	—	12-4 AWG
<b>VDE Approval</b>	—	—	4mm <sup>2</sup>	—	—	10mm <sup>2</sup>	—	—	16mm <sup>2</sup>
<b>CE Conformity</b>	—	—	4mm <sup>2</sup>	—	—	10mm <sup>2</sup>	—	—	16mm <sup>2</sup>
<b>Operating Temperature</b>	Ambient air temperature: -67 to 185°F [-55 to 85°C], Relative humidity: 50% max at 104°F [40°C] and 90% max at 68°F [20°C]								
<b>SCCR Rating</b>	100kA per Table SB4.1, 2009, UL 508A. Maximum short circuit current rating for unmarked components.								
<b>Material</b>	Current Bar: Copper Alloy / Housing: Polyamide 66 / Screws: Zinc Plated Steel								
<b>DIN Rail Width</b>	35mm								

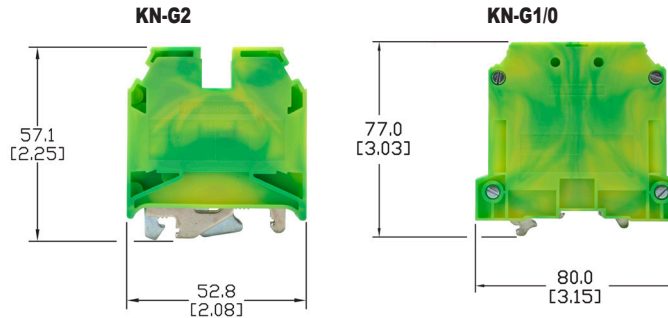
Accessories			
<b>Marking Tags</b>	KN-L5 Series	KN-L5 Series KN-L6 Series	KN-L5 Series KN-L6 Series

To obtain the most current agency approval information, see the Agency Approval Checklist section on the specific part number's web page.



Dimensions: mm [in]

- Spring clamp terminal
- UL E179129  
(For copper wire only. One conductor in terminal only.)
- CE (EN 60947-7-1/  
EN 60947-7-2)
- VDE (IEC 60947-7-1)



See our website: for complete engineering drawings

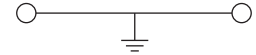
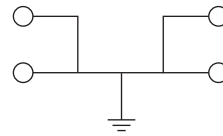
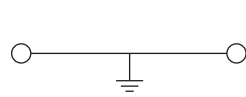
Ordering Information						
Color	Part Number	Qty	Price	Part Number	Qty	Price
Yellow/Green	<b>KN-G2</b>	40		<b>KN-G1/0</b>	10	
	<b>KN-G2-10</b>	10		<b>KN-G1/0-5</b>	5	

Technical Specifications						
Model	KN-G2			KN-G1/0		
<b>Width</b>	16mm [0.63 in]			20mm [0.79 in]		
<b>Stripping Length</b>	18mm [0.71 in]			20mm [0.79 in]		
<b>Tightening Torque</b>	2.5 N·m [22.1 lb-in]			6 N·m [22.1 lb-in]		
<b>Density</b>	62/m [19 pcs/ft]			50/m [15 pcs/ft]		
<b>UL/CSA Approval</b>	—	—	12-2 AWG	—	—	6-1/0 AWG
<b>VDE Approval</b>	—	—	35mm <sup>2</sup>	—	—	50mm <sup>2</sup>
<b>CE Conformity</b>	—	—	35mm <sup>2</sup>	—	—	50mm <sup>2</sup>
<b>Operating Temperature</b>	Ambient air temperature: -67 to 185°F [-55 to 85°C] Relative humidity: 50% max at 104°F [40°C] and 90% max at 68°F [20°C]					
<b>SCCR Rating</b>	100kA per Table SB4.1, 2009, UL 508A. Maximum short circuit current rating for unmarked components.					
<b>Material</b>	Current Bar: Copper Alloy / Housing: Polyamide 66 / Screws: Zinc Plated Steel					
<b>DIN Rail Width</b>	35mm			35mm		

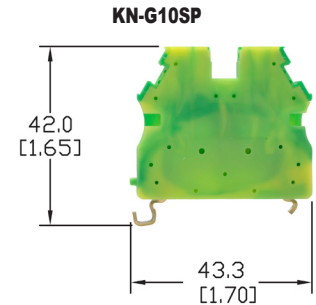
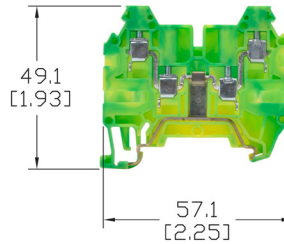
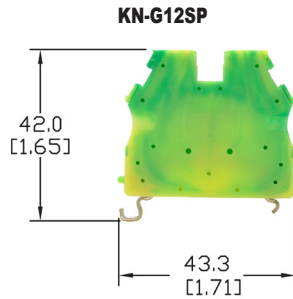
Accessories		
<b>Marking Tags</b>	KN-L5 Series KN-L6P5 Series	No tags available

To obtain the most current agency approval information, see the Agency Approval Checklist section on the specific part number's web page.

- Screw connection terminal
- PE snap-on connection
- UL E179129 (For copper wire only. One conductor in terminal only.)
- CE (EN 60947-7-1/ EN 60947-7-2)
- VDE (IEC 60947-7-2)



Dimensions: mm [in]



See our website: for complete engineering drawings

Ordering Information									
Color	Part Number	Qty	Price	Part Number	Qty	Price	Part Number	Qty	Price
Yellow/Green	<b>KN-G12SP</b>	50		<b>KN-G12SP4</b>	25		<b>KN-G10SP</b>	50	
	<b>KN-G12SP-10</b>	10		<b>KN-G12SP4-10</b>	10		<b>KN-G10SP-10</b>	10	

Technical Specifications									
Model	KN-G12SP			KN_G12SP4			KN-G10SP		
<b>Width</b>	5.75 mm [0.23 in]			5mm [0.20 in]			6mm [0.24 in]		
<b>Stripping Length</b>	10mm [0.39 in]			10mm [0.39 in]			10mm [0.39 in]		
<b>Tightening Torque</b>	0.4 N·m [3.5 lb·in]			0.5 N·m [4.4 lb·in]			0.5 N·m [4.4 lb·in]		
<b>Density</b>	53 pcs/ft [173/m]			200/m [60 pcs/ft]			161/m [49 pcs/ft]		
<b>UL/CSA Approval</b>	—	—	26-12 AWG	—	—	26-12 AWG	—	—	26-10 AWG
<b>VDE Approval</b>	—	—	2.5 mm <sup>2</sup>	—	—	2.5 mm <sup>2</sup>	—	—	4mm <sup>2</sup>
<b>CE Conformity</b>	—	—	2.5 mm <sup>2</sup>	—	—	2.5 mm <sup>2</sup>	—	—	4mm <sup>2</sup>
<b>Operating Temperature</b>	Ambient air temperature: -67 to 185°F [-55 to 85°C], Relative humidity: 50% max at 104°F [40°C] and 90% max at 68°F [20°C]								
<b>SCCR Rating</b>	100kA per Table SB4.1, 2009, UL 508A. Maximum short circuit current rating for unmarked components.								
<b>Material</b>	Current Bar: Copper Alloy / Housing: Polyamide 66 / Screws: Zinc Plated Steel								
<b>DIN Rail Width</b>	35mm								

Accessories									
<b>End Covers</b>	Yellow/Green	—	—	—	<b>KN-ECG12SP4</b>	10/pkg	—	—	—
<b>Marking Tags</b>	KN-L5 Series			KN-L5 Series			KN-L5 Series		

To obtain the most current agency approval information, see the Agency Approval Checklist section on the specific part number's web page.

## Multi-Pole Jumper Bars

Multi-pole jumper bars provide terminal block connection flexibility. Screw-down connection jumpers feature all-metal construction and can be installed quickly just by tightening the screws. Screwless comb-style jumpers are also available. See next page for the larger J1/0 jumper installation instructions.

KN-10J12



KN-2JM12



KN-2JCC8



### Multi-Pole Jumper Bars Ordering Information

Type	Part Number	Price	Qty	Number of Poles	Ratings	Dimensions - mm [in]			Fig.	Works With
						Height	Length	Width		
Screw-down connection	<a href="#">KN-2J12</a>		25	2	750V 24A	15.8 [0.62]	10.1 [0.40]	4.4 [0.17]	1	KN-T12 KN-D12 KN-D12X KN-D12DR1 KN-D12LED
	<a href="#">KN-3J12</a>		20	3	750V 24A		15.3 [0.60]			
	<a href="#">KN-4J12</a>		15	4	750V 24A		20.4 [0.80]			
	<a href="#">KN-10J12</a>		5	10	750V 24A		51.1 [2.01]			
	<a href="#">KN-2J10</a>		25	2	750V 32A	15.5 [0.61]	10.8 [0.43]	6.0 [0.24]	1	KN-T10 KN-D10 KN-D10X KN-D10DR1 KN-D10LED
	<a href="#">KN-3J10</a>		20	3	750V 32A		17.0 [0.67]			
	<a href="#">KN-4J10</a>		15	4	750V 32A		23.0 [0.91]			
	<a href="#">KN-10J10</a>		5	10	750V 32A		59.0 [2.32]			
	<a href="#">KN-2J8</a>		25	2	630V 41A	15.5 [0.61]	14.3 [0.56]	6.0 [0.24]	1	KN-T8
	<a href="#">KN-3J8</a>		20	3	630V 41A		22.3 [0.88]			
	<a href="#">KN-4J8</a>		15	4	630V 41A		30.3 [1.19]			
	<a href="#">KN-10J8</a>		5	10	630V 41A		78.3 [3.08]			
	<a href="#">KN-2J6</a>		25	2	630V 57A	15.5 [0.61]	18.0 [0.71]	6.0 [0.24]	1	KN-T6
	<a href="#">KN-3J6</a>		20	3	630V 57A		28.0 [1.10]			
	<a href="#">KN-4J6</a>		15	4	630V 57A		38.0 [1.50]			
	<a href="#">KN-10J6</a>		5	10	630V 57A		98.0 [3.86]			
	<a href="#">KN-2J4</a>		25	2	750V 76A	23.0 [0.91]	21.0 [0.83]	6.0 [0.24]	1	KN-T4
	<a href="#">KN-3J4</a>		20	3	750V 76A		33.0 [1.30]			
	<a href="#">KN-4J4</a>		15	4	750V 76A		45.0 [1.77]			
	<a href="#">KN-10J4</a>		5	10	750V 76A		117.0 [4.61]			
<a href="#">KN-2J2</a>		25	2	750V 125A	21.0 [0.83]	29.0 [1.14]	8.0 [0.31]	1	KN-T2	
<a href="#">KN-3J2</a>		20	3	750V 125A		45.0 [1.77]				
<a href="#">KN-4J2</a>		15	4	750V 125A		61.0 [2.40]				
<a href="#">KN-10J2</a>		5	10	750V 125A		157.0 [6.18]				
<a href="#">KN-2J1/0</a>		5	2	1000V 150A	22.3 [0.88]	36.0 [1.42]	12.0 [0.47]	2	KN-T1/0	
<a href="#">KN-3J1/0</a>		5	3	1000V 150A		56.0 [2.20]				
<a href="#">KN-4J1/0</a>		5	4	1000V 150A		76.0 [2.99]				
<a href="#">KN-2JTL12</a>		25	2	440V 24A	15.5 [0.61]	11.0 [0.43]	4.4 [0.17]	1	KN-DG12 KN-TG12 KN-TL14 KN-TL14S KN-TL14SLN KN-TL14SP	
<a href="#">KN-3JTL12</a>		20	3	440V 24A		17.0 [0.67]				
<a href="#">KN-4JTL12</a>		15	4	440V 24A		23.0 [0.91]				
<a href="#">KN-10JTL12</a>		5	10	440V 24A		59.0 [2.32]				
Push-in Connection	<a href="#">KN-2JM10</a>		25	2	750V 32A	23.2 [0.91]	9.5 [0.37]	2.7 [0.11]	3	KN-M10 KN-KBD10
	<a href="#">KN-3JM10</a>		20	3	750V 32A		15.5 [0.61]			
	<a href="#">KN-4JM10</a>		15	4	750V 32A		21.5 [0.85]			
	<a href="#">KN-10JM10</a>		5	10	750V 32A		57.5 [2.26]			
	<a href="#">KN-2JM12</a>		25	2	750V 24A	21.7 [0.85]	8.0 [0.31]	2.3 [0.09]	3	KN-M12 KN-T12SP4
	<a href="#">KN-3JM12</a>		20	3	750V 24A		13.0 [0.51]			
	<a href="#">KN-4JM12</a>		15	4	750V 24A		18.0 [0.71]			
<a href="#">KN-10JM12</a>		5	10	750V 24A	48.0 [1.89]					
Screwless Comb-style	<a href="#">KN-2JCC12</a>		25	2	750V 24A	23.7 [0.93]	8.0 [0.31]	2.8 [0.11]	4	KN-T12
	<a href="#">KN-2JCC10</a>		25		750V 32A	24.7 [0.97]	9.5 [0.37]			KN-T10
	<a href="#">KN-2JCC8</a>		25		630V 41A	25.6 [1.01]	13.5 [0.53]			KN-T8
	<a href="#">KN-2JCC6</a>		25		630V 57A	26.7 [1.05]	16.0 [0.63]			KN-T6

Figure 1

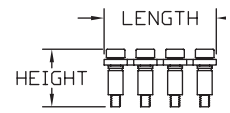


Figure 2

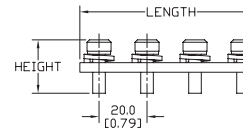


Figure 3

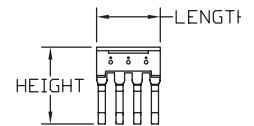
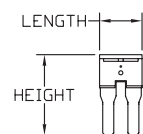


Figure 4



Please visit our website

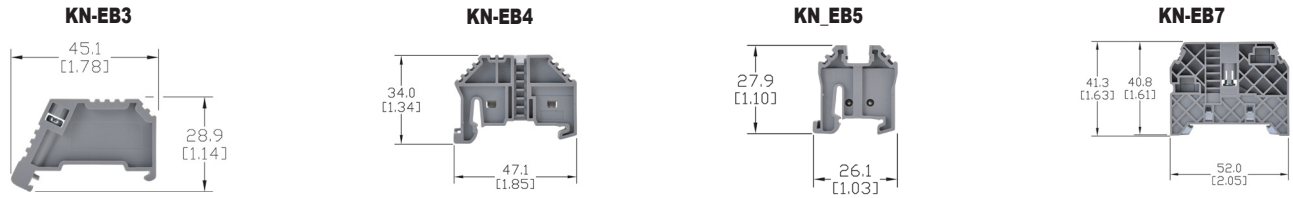
for complete engineering drawings.

Screwless Comb-Style jumpers are designed to be connected under the conductor clamp.

## End Brackets

End brackets prevent terminal blocks and other DIN rail mount components and devices from moving laterally on the rail. They are constructed from polyamide 66 and available in configurations for 35mm and 15mm DIN rails.

Dimensions mm [in]



### End Brackets Ordering Information

Gray End Brackets	<a href="#">KN-EB3</a>	100/pkg	<a href="#">KN-EB4</a>	100/pkg	<a href="#">KN-EB5</a>	100/pkg	<a href="#">KN-EB7</a>	50/pkg
	<a href="#">KN-EB3-10</a>	10/pkg	<a href="#">KN-EB4-10</a>	10/pkg	<a href="#">KN-EB5-10</a>	10/pkg	<a href="#">KN-EB7-10</a>	10/pkg

### Technical Specifications

Description	Screw-type end bracket	Screwless end bracket	Screwless end bracket	Screw-type end bracket
Bracket Width	8 mm [0.31 in]	8 mm [0.31 in]	8 mm [0.31 in]	10 mm [0.39 in]
DIN Rail Width	35 mm	35 mm	15 mm	35 mm
Material	Housing: Polyamide 66 / Clamping Connector: Zinc Plated Steel			

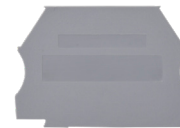
### End Bracket Accessories

Label Holder	—	—	—	<a href="#">KN-MA-1</a>	25/pkg	—	—	—	<a href="#">KN-MA-2</a>	50/pkg
Marking Tags	—	—	—	<a href="#">KN-MA-1-10</a>	10/pkg	—	—	—	<a href="#">KN-MA-2-10</a>	10/pkg
KN-L5 Series or KN-L6P5 Series										

## End Covers

End covers are used to cover the open side of sectional DIN rail mount terminal blocks. They should be used at the end of an assembly of identical terminal blocks or whenever there is a change in the physical size of the terminal block.

Material: Polyamide 66



### End Covers Ordering Information

Part Number	Color	Dimensions H x L x W mm [in]	Suitable for	Qty	Price	Part Number	Color	Dimensions H x L x W mm [in]	Suitable for	Qty	Price		
<a href="#">KN-ECT6GRY</a>	gray	34.0x42.7x1.3 [1.34x1.68x0.05]	KN-T12 KN-T10 KN-T8 KN-T6	100		<a href="#">KN-ECDORG</a>	orange	48.2x63.2x1.3 [1.90x2.49x0.05]	KN-D10 KN-D12	10			
<a href="#">KN-ECT6GRY-25</a>	gray			25		<a href="#">KN-ECDRED</a>	red						
<a href="#">KN-ECT6BLU</a>	blue					<a href="#">KN-ECDYEL</a>	yellow						
<a href="#">KN-ECT6BLK</a>	black							<a href="#">KN-ECTL</a>	gray	54.7x87.1x1.3 [2.15x3.43x0.05]	KN-TL14	10	
<a href="#">KN-ECT6BRN</a>	brown							<a href="#">KN-ECTLS</a>	gray	54.7x72.8x1.2 [2.15x2.87x0.05]	KN-TL14S	10	
<a href="#">KN-ECT6GRN</a>	green							<a href="#">KN-ECDG12</a>	gray	48.0x71.4x1.2 [1.89x2.81x0.05]	KN-DG12	10	
<a href="#">KN-ECT6ORG</a>	orange							<a href="#">KN-ECTG12</a>	gray	62.5x87.5x1.2 [2.46x3.44x0.05]	KN-TG12	10	
<a href="#">KN-ECT6RED</a>	red							<a href="#">KN-ECMGRY</a>	gray	28.1x27.0x3.0 [1.11x1.06x0.12]	KN-M12 KN-M10	100	
<a href="#">KN-ECT6WHT</a>	white							<a href="#">KN-ECMGRY-10</a>	gray			10	
<a href="#">KN-ECT6YEL</a>	yellow							<a href="#">KN-ECMBLU</a>	blue				
<a href="#">KN-ECT4GRY</a>	gray	45.7x52.8x1.2 [1.80x2.08x0.05]	KN-T4	25		<a href="#">KN-ECMGRN</a>	green/ yellow	28.1x27.0x3.0 [1.11x1.06x0.12]	KN-MG12 KN-MG10	10			
<a href="#">KN-ECT4BLU</a>	blue			10		<a href="#">KN-ECG12SP4</a>	green/ yellow	39.7x57.1x1.2 [1.56x2.25x0.05]	KN-G12SP4	10			
<a href="#">KN-ECDGRY</a>	gray	48.2x63.2x1.3 [1.90x2.49x0.05]	KN-D10 KN-D12	25		<a href="#">KN-ECT12SP4</a>	gray	39.7x57.1x1.2 [1.56x2.25x0.05]	KN-T12SP4	25			
<a href="#">KN-ECDBLU</a>	blue			10		<a href="#">KN-ECF10</a>	gray	27.3x59.6x1.2 [1.07x2.35x0.05]	KN-F10	25			
<a href="#">KN-ECDBLK</a>	black					<a href="#">KN-ECKBD</a>	gray	37.1x53.5x1.2 [1.46x2.11x0.05]	KN-KDB10	10			
<a href="#">KN-ECDGRN</a>	green												

## Separators

Separators are used to segment banks of terminal blocks. Allows you to maintain a single row of terminal blocks, but have separate power source clusters.

Separators Ordering Information							
Part Number	Color	Works With	Dimensions - mm [in]			Qty	Price
			Height	Length	Thickness		
<a href="#">KN-ST1GRY</a>	Gray	KN-T12 KN-T10 KN-T8 KN-T6	39.0 [1.54]	42.5 [1.67]	1.2 [0.05]	10	
<a href="#">KN-ST1BLU</a>	Blue						
<a href="#">KN-ST1BLK</a>	Black						
<a href="#">KN-ST1BRN</a>	Brown						
<a href="#">KN-ST1GRN</a>	Green						
<a href="#">KN-ST1ORG</a>	Orange						
<a href="#">KN-ST1RED</a>	Red						
<a href="#">KN-ST1WHT</a>	White						
<a href="#">KN-ST1YEL</a>	Yellow						
<a href="#">KN-ST2GRY</a>	Gray	KN-T4	52.5 [2.07]	50.5 [1.99]	1.5 [0.06]	25	
<a href="#">KN-ST2BLU</a>	Blue						
<a href="#">KN-ST3GRY</a>	Gray	KN-T2	62.6 [2.46]	53.1 [2.09]	1.5 [0.06]	10	
<a href="#">KN-ST3BLU</a>	Blue						

KN-ST1GRY



## Top Covers and Label Holders

Top Covers and Label Holders Ordering Information							
Part Number	Description	Works With	Dimensions - mm [in]			Qty	Price
			Height	Length	Width		
<a href="#">KN-TC-1</a>	Top cover for Konnect-It terminal block, blank, white	KN-T12 KN-T10 KN-T8 KN-T6	6.8 [0.27]	29.0 [1.14]	5.8 [0.23]	25	
<a href="#">KN-TC-1S</a>	Top cover for Konnect-It terminal block, printed electric symbol, white						
<a href="#">KN-TC-2</a>	Top cover for Konnect-It terminal block, blank, white						KN-T4 KN-T2
<a href="#">KN-TC-2S</a>	Top cover for Konnect-It terminal block, printed electric symbol, white						
<a href="#">KN-MA-1</a>	Label holder for terminal block group. Label media not included. Adhesive label: Apply on top.	KN-EB4	46.2 [1.82]	46.0 [1.81]	11.4 [0.45]	25	
<a href="#">KN-MA-1-10</a>	Max label dimensions: 7 x 44 mm (0.28 x 1.73 in).						
<a href="#">KN-MA-2</a>	Label holder for terminal block group. Label media not included. Adhesive label: Apply on top.	KN-EB7	37.5 [1.48]	46.2 [1.82]	9.5 [0.37]	50	
<a href="#">KN-MA-2-10</a>	Max label dimensions: 7 x 44 mm (0.28 x 1.73 in).						
<a href="#">KN-MA-3</a>	Top mounting marking tag adapter for terminal block. Holds up to (4) L5x5 tags	KN-T4 KN-T2	9.3 [0.36]	36.0 [1.42]	9.0 [0.35]	25	
<a href="#">KN-MA-4</a>	Top mounting marking tag adapter for terminal block. Holds up to (4) L5x5 tags	KN-T12 KN-T10 KN-T8 KN-T6	9.0 [0.35]	29.0 [1.14]	5.7 [0.22]	25	
<a href="#">KN-MA-5</a>	Label holder for terminal block group. Label media included.	Attaches to any 35mm DIN rail	46.4 [1.83]	44.5 [1.75]	10.0 [0.39]	50	
<a href="#">KN-MA-5-25</a>	Max label dimensions: 10 x 38mm (0.39 x 1.50 in). Thickness 0.30 mm (0.01 in)						

KN-MA-1



KN-MA-2



KN-MA-5



KN-TC-1 / KN-TC-2



KN-TC-1S / KN-TC-2S



KN-MA-3



KN-MA-4





## Marking Tags 5 x 5mm

Use with any KONNECT-IT series terminal blocks.

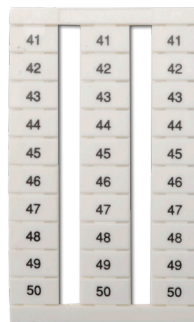


5 x 5mm Marking Tags Ordering Information											
250 Pieces per Package						500 Pieces per Package					
Part Number	Imprint	Price	Part Number	Imprint	Price	Part Number	Imprint	Price	Part Number	Imprint	Price
<a href="#">KN-L5-BLANK-250</a>	Blank		<a href="#">KN-L5-A-250</a>	A		<a href="#">KN-L5-BLANK</a>	Blank		<a href="#">KN-L5-A</a>	A	
<a href="#">KN-L5-0-250</a>	0		<a href="#">KN-L5-B-250</a>	B		<a href="#">KN-L5-0</a>	0		<a href="#">KN-L5-B</a>	B	
<a href="#">KN-L5-1-250</a>	1		<a href="#">KN-L5-C-250</a>	C		<a href="#">KN-L5-1</a>	1		<a href="#">KN-L5-C</a>	C	
<a href="#">KN-L5-2-250</a>	2		<a href="#">KN-L5-D-250</a>	D		<a href="#">KN-L5-2</a>	2		<a href="#">KN-L5-D</a>	D	
<a href="#">KN-L5-3-250</a>	3		<a href="#">KN-L5-E-250</a>	E		<a href="#">KN-L5-3</a>	3		<a href="#">KN-L5-E</a>	E	
<a href="#">KN-L5-4-250</a>	4		<a href="#">KN-L5-F-250</a>	F		<a href="#">KN-L5-4</a>	4		<a href="#">KN-L5-F</a>	F	
<a href="#">KN-L5-5-250</a>	5		<a href="#">KN-L5-G-250</a>	G		<a href="#">KN-L5-5</a>	5		<a href="#">KN-L5-G</a>	G	
<a href="#">KN-L5-6-250</a>	6		<a href="#">KN-L5-H-250</a>	H		<a href="#">KN-L5-6</a>	6		<a href="#">KN-L5-H</a>	H	
<a href="#">KN-L5-7-250</a>	7		<a href="#">KN-L5-I-250</a>	I		<a href="#">KN-L5-7</a>	7		<a href="#">KN-L5-I</a>	I	
<a href="#">KN-L5-8-250</a>	8		<a href="#">KN-L5-J-250</a>	J		<a href="#">KN-L5-8</a>	8		<a href="#">KN-L5-J</a>	J	
<a href="#">KN-L5-9-250</a>	9		<a href="#">KN-L5-K-250</a>	K		<a href="#">KN-L5-9</a>	9		<a href="#">KN-L5-K</a>	K	
<a href="#">KN-L5-10-250</a>	10		<a href="#">KN-L5-L-250</a>	L		<a href="#">KN-L5-10</a>	10		<a href="#">KN-L5-L</a>	L	
<a href="#">KN-L5-1-10-250</a>	1-10		<a href="#">KN-L5-M-250</a>	M		<a href="#">KN-L5-1-10</a>	1-10		<a href="#">KN-L5-M</a>	M	
<a href="#">KN-L5-11-20-250</a>	11-20		<a href="#">KN-L5-N-250</a>	N		<a href="#">KN-L5-11-20</a>	11-20		<a href="#">KN-L5-N</a>	N	
<a href="#">KN-L5-21-30-250</a>	21-30		<a href="#">KN-L5-O-250</a>	O		<a href="#">KN-L5-21-30</a>	21-30		<a href="#">KN-L5-O</a>	O	
<a href="#">KN-L5-31-40-250</a>	31-40		<a href="#">KN-L5-P-250</a>	P		<a href="#">KN-L5-31-40</a>	31-40		<a href="#">KN-L5-P</a>	P	
<a href="#">KN-L5-41-50-250</a>	41-50		<a href="#">KN-L5-Q-250</a>	Q		<a href="#">KN-L5-41-50</a>	41-50		<a href="#">KN-L5-Q</a>	Q	
<a href="#">KN-L5-1-50-250</a>	1-50		<a href="#">KN-L5-R-250</a>	R		<a href="#">KN-L5-1-50</a>	1-50		<a href="#">KN-L5-R</a>	R	
<a href="#">KN-L5-51-100-250</a>	51-100		<a href="#">KN-L5-S-250</a>	S		<a href="#">KN-L5-51-100</a>	51-100		<a href="#">KN-L5-S</a>	S	
<a href="#">KN-L5-101-150-250</a>	101-150		<a href="#">KN-L5-T-250</a>	T		<a href="#">KN-L5-101-150</a>	101-150		<a href="#">KN-L5-T</a>	T	
<a href="#">KN-L5-151-200-250</a>	151-200		<a href="#">KN-L5-U-250</a>	U		<a href="#">KN-L5-151-200</a>	151-200		<a href="#">KN-L5-U</a>	U	
<a href="#">KN-L5-201-250-250</a>	201-250		<a href="#">KN-L5-V-250</a>	V		<a href="#">KN-L5-201-250</a>	201-250		<a href="#">KN-L5-V</a>	V	
<a href="#">KN-L5-251-300-250</a>	251-300		<a href="#">KN-L5-W-250</a>	W		<a href="#">KN-L5-251-300</a>	251-300		<a href="#">KN-L5-W</a>	W	
<a href="#">KN-L5-301-350-250</a>	301-350		<a href="#">KN-L5-X-250</a>	X		<a href="#">KN-L5-301-350</a>	301-350		<a href="#">KN-L5-X</a>	X	
<a href="#">KN-L5-351-400-250</a>	351-400		<a href="#">KN-L5-Y-250</a>	Y		<a href="#">KN-L5-351-400</a>	351-400		<a href="#">KN-L5-Y</a>	Y	
<a href="#">KN-L5-401-450-250</a>	401-450		<a href="#">KN-L5-Z-250</a>	Z		<a href="#">KN-L5-401-450</a>	401-450		<a href="#">KN-L5-Z</a>	Z	
<a href="#">KN-L5-451-500-250</a>	451-500		<a href="#">KN-L5-POS-250</a>	+		<a href="#">KN-L5-451-500</a>	451-500		<a href="#">KN-L5-POS</a>	+	
<a href="#">KN-L5-L1-250</a>	L1		<a href="#">KN-L5-NEG-250</a>	-		<a href="#">KN-L5-L1</a>	L1		<a href="#">KN-L5-NEG</a>	-	
<a href="#">KN-L5-L2-250</a>	L2		<a href="#">KN-L5-GND-250</a>	GND		<a href="#">KN-L5-L2</a>	L2		<a href="#">KN-L5-GND</a>	GND	
<a href="#">KN-L5-L3-250</a>	L3					<a href="#">KN-L5-L3</a>	L3				

## Marking Tags 6.5 x 10mm

Use with any KONNECT-IT series terminal blocks 6.5mm or wider.

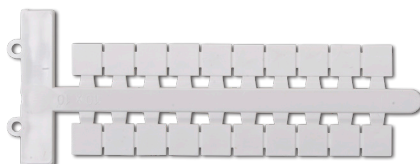
6.5 x 10mm Marking Tags Ordering Information			
Part Number	Description	Qty	Price
<a href="#"><u>KN-L6P5-BLNK-250</u></a>	Blank	250	
<a href="#"><u>KN-L6P5-1-10-250</u></a>	Numbered 1-10	250	
<a href="#"><u>KN-L6P5-11-20-250</u></a>	Numbered 11-20	250	
<a href="#"><u>KN-L6P5-21-30-250</u></a>	Numbered 21-30	250	
<a href="#"><u>KN-L6P5-31-40-250</u></a>	Numbered 31-40	250	
<a href="#"><u>KN-L6P5-41-50-250</u></a>	Numbered 41-50	250	
<a href="#"><u>KN-L6P5-51-60-250</u></a>	Numbered 51-60	250	
<a href="#"><u>KN-L6P5-61-70-250</u></a>	Numbered 61-70	250	
<a href="#"><u>KN-L6P5-71-80-250</u></a>	Numbered 71-80	250	
<a href="#"><u>KN-L6P5-81-90-250</u></a>	Numbered 81-90	250	
<a href="#"><u>KN-L6P5-91-100-250</u></a>	Numbered 91-100	250	
<a href="#"><u>KN-L6P5-BLNK</u></a>	Blank	500	
<a href="#"><u>KN-L6P5-1-10</u></a>	Numbered 1-10	500	
<a href="#"><u>KN-L6P5-11-20</u></a>	Numbered 11-20	500	
<a href="#"><u>KN-L6P5-21-30</u></a>	Numbered 21-30	500	
<a href="#"><u>KN-L6P5-31-40</u></a>	Numbered 31-40	500	
<a href="#"><u>KN-L6P5-41-50</u></a>	Numbered 41-50	500	
<a href="#"><u>KN-L6P5-51-60</u></a>	Numbered 51-60	500	
<a href="#"><u>KN-L6P5-61-70</u></a>	Numbered 61-70	500	
<a href="#"><u>KN-L6P5-71-80</u></a>	Numbered 71-80	500	
<a href="#"><u>KN-L6P5-81-90</u></a>	Numbered 81-90	500	
<a href="#"><u>KN-L6P5-91-100</u></a>	Numbered 91-100	500	



## Marking Tags 5 x 10mm, 6 x 10mm, 10 x 10mm

Marking Tags Ordering Information			
Part Number*	Description	Qty	Price
<a href="#"><u>KN-L5X-BLNK-220</u></a>	Blank marking tag, 5x10mm, use with any Connect-It terminal block series	220	
<a href="#"><u>KN-L6X-BLNK-180</u></a>	Blank marking tag, 6x10mm, use with any Connect-It terminal block 6mm or wider	180	
<a href="#"><u>KN-L10X-BLNK-100</u></a>	Blank marking tag, 10x10mm, use with any Connect-It terminal block 10mm or wider	100	
<a href="#"><u>KN-L5X-BLNK</u></a>	Blank marking tag, 5x10mm, use with any Connect-It terminal block series	440	
<a href="#"><u>KN-L6X-BLNK</u></a>	Blank marking tag, 6x10mm, use with any Connect-It terminal block 6mm or wider	360	
<a href="#"><u>KN-L10X-BLNK</u></a>	Blank marking tag, 10x10mm, use with any Connect-It terminal block 10mm or wider	200	

\*Does not fit any KN-T1/0 or KN-G1/0 series block





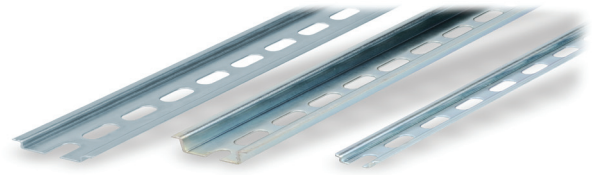
## Steel DIN Rails Features

### 35mm wide

- Available in 1-meter lengths
- 7.5 mm-high rails primarily used to mount terminal blocks, relays, timers and small PLCs such as the DL05, DL06, DL105, DL205, CLICK, and Productivity3000
- 15mm-high rails for mounting larger and heavier components such as contactors and larger PLCs

### 15mm wide

- Available in 1-meter lengths
- DN-R15S1 exclusively for mounting mini terminal blocks such as the DN-M10-A



Steel DIN Rails Specifications									
	Part Number	Qty	Price	Part Number	Qty	Price	Part Number	Qty	Price
DIN Rail	<a href="#"><u>DN-R35S1</u></a>	10		<a href="#"><u>DN-R35HS1</u></a>	10		<a href="#"><u>DN-R15S1</u></a>	10	
	<a href="#"><u>DN-R35S1-2</u></a>	2		<a href="#"><u>DN-R35HS1-2</u></a>	2		<a href="#"><u>DN-R15S1-2</u></a>	2	
Description	DINnector DIN rail, slotted, 35mm, 7.5mm height, 1m length, plated steel. Package of 10.			DINnector DIN rail, slotted, 35mm, 15mm height, 1m length, plated steel. Package of 10.			DINnector DIN rail, slotted, 15mm, 5.5mm height, 1m length, plated steel. Package of 2.		
Plating	Zinc-plated and chromated								
International Standards	EN 60715, RoHs								
Suggested Mounting Screw Type	M6			M6			M4		

## Aluminum DIN Rail Features

### 35mm wide

- Non-anodized finish
- Zinc plating and passivation (minimum thickness 6 microns)
- Lightweight, easy to cut and deburr
- Terminal blocks only
- Maximum mounting screw #10-32 or M5
- Available in 1-meter lengths

### 35mm wide raised

- Non-anodized finish
- Zinc plating and passivation (minimum thickness 6 microns)
- Enables users to raise terminal blocks 2¼" above the back panel
- Terminal blocks only
- Available in 1-meter lengths
- Bushing or grommet recommended for wire access hole (example Heyco UB-875 not sold by ADC)



Aluminum DIN Rails Specifications						
	Part Number	Qty	Price	Part Number	Qty	Price
DIN Rail	<a href="#"><u>DN-R35SAL1</u></a>	10		<a href="#"><u>DN-R35SAL2-2</u></a>	2	
	<a href="#"><u>DN-R35SAL1-2</u></a>	2				
Description	DINnector DIN rail, slotted, 35mm, 10mm height, 1m length, aluminum. Package of 10.			DINnector DIN rail, slotted, 2in raised 35mm, 7.5mm height, 1m length, aluminum. Package of 2.		
Plating	Galvanic zinc plating, non-anodized finish					
International Standards	DIN 50960, RoHs					
Suggested Mounting Screw Type	#10-32 or M5					

## DIN rail support brackets

- Angled support brackets raise and tilt mounting rails 30 degrees from mounting surface for easier wiring
- DN-ASB1 plated steel support bracket
- DN-ASB2-10 cold-rolled steel treated with galvanic zinc plating and passivation

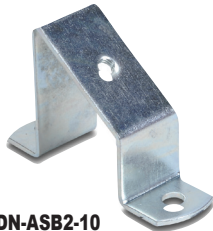
## DIN rail mounting clips

- Snap small devices not made for mounting onto 35mm DIN rails
- Zinc plated steel

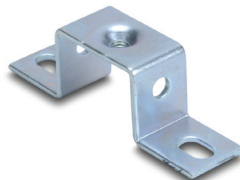
DIN Rail Support Brackets and Mounting Clips			
Part Number	Description	Qty	Price
<b><u>DN-ASB1</u></b>	30° angled DIN rail support bracket (M6-1.0 screws not included)	50	
<b><u>DN-ASB2-10</u></b>	30° angled DIN rail support bracket (M6-1.0 screws included)	10	
<b><u>DN-SSB25-10</u></b>	1" (25 mm) DIN rail support bracket (M6-1.0 screws included)	10	
<b><u>DN-SSB50-10</u></b>	2" (50 mm) DIN rail support bracket (M6-1.0 screws included)	10	
<b><u>DN-SSB70-10</u></b>	2.75" (70 mm) DIN rail support bracket (M6-1.0 screws included)	10	
<b><u>DN-SSB90-10</u></b>	3.5" (90 mm) DIN rail support bracket (M6-1.0 screws included)	10	
<b><u>DN-CLIP-FM4</u></b>	DIN rail mounting clip with M4 x 0.7 mm threaded hole (Screws not included)	40	
<b><u>DN-CLIP-FM4-5</u></b>		5	
<b><u>DN-CLIP-FM5</u></b>	DIN rail mounting clip with M5 x 0.8 mm threaded hole (Screws not included)	40	
<b><u>DN-CLIP-FM5-5</u></b>		5	



**DN-ASB1**



**DN-ASB2-10**



**DN-SSB25-10**



**DN-SSB50-10**



**DN-SSB70-10**



**DN-SSB90-10**



**DN-CLIP-FM4  
DN-CLIP-FM4-5**



**DN-CLIP-FM5  
DN-CLIP-FM5-5**

## Allen-Bradley®

The following is a list of comparable products. To obtain our high-quality KONNECT-IT terminal blocks, simply find the corresponding part number of the unit you currently use. These are approximate replacements based on UL wire size, ampacity and voltage. Please consult the technical section for specifications to determine suitability for your application. Physical size varies from manufacturer to manufacturer.

Allen-Bradley	KONNECT-IT
1492-J3	KN-T12GRY
1492-J3-B	KN-T12BLU
1492-J3-BL	KN-T12BLK
1492-J3-BR	KN-T12BRN
1492-J3-G	KN-T12GRN
1492-J3-OR	KN-T12ORG
1492-J3-RE	KN-T12RED
1492-J3-W	KN-T12WHT
1492-J3-Y	KN-T12YEL
1492-J4	KN-T10GRY
1492-J4-B	KN-T10BLU
1492-J4-BL	KN-T10BLK
1492-J4-BR	KN-T10BRN
1492-J4-G	KN-T10GRN
1492-J4-OR	KN-T10ORG
1492-J4-RE	KN-T10RED
1492-J4-W	KN-T10WHT
1492-J4-Y	KN-T10YEL
1492-J6	KN-T8GRY
1492-J6-B	KN-T8BLU
1492-J6-BL	KN-T8BLK
1492-J6-BR	KN-T8BRN
1492-J6-G	KN-T8GRN
1492-J6-OR	KN-T8ORG
1492-J6-RE	KN-T8RED
1492-J6-W	KN-T8WHT
1492-J6-Y	KN-T8YEL
1492-J10	KN-T6GRY
1492-J10-B	KN-T6BLU
1492-J10-BL	KN-T6BLK
1492-J10-BR	KN-T6BRN
1492-J10-G	KN-T6GRN
1492-J10-OR	KN-T6ORG
1492-J10-RE	KN-T6RED
1492-J10-W	KN-T6WHT
1492-J10-Y	KN-T6YEL

Allen-Bradley	KONNECT-IT
1492-J16	KN-T4GRY
1492-J16-B	KN-T4BLU
1492-J35	KN-T2GRY
1492-J35-B	KN-T2BLU
1492-J50	KN-T1/0GRY
1492-J50-B	KN-T1/0BLU
1492-J70	KN-T2/0GRY
1492-J70-B	KN-T2/0BLU
1492-JD3	KN-D12GRY
1492-JD3-B	KN-D12BLU
1492-JD3C	KN-D12X
1492-JD3DR	KN-D12DR1
1492-JD4	KN-D10GRY
1492-JD4-B	KN-D10BLU
1492-JD4C	KN-D10X
1492-WTF3	KN-TL14
1492-WTS3	KN-TL14S
1492-JT3M	KN-TG12
1492-J2Q	KN-T12SP4
1492-WM3	KN-M12GRY
1492-WM3-B	KN-M12BLU
1492-WM4	KN-M10GRY
1492-WM4-B	KN-M10BLU
1492-JG3	KN-G10
1492-JG4	KN-G10
1492-JG6	KN-G8
1492-JG10	KN-G8
1492-JG16	KN-G4
1492-JG35	KN-G2
1492-JG50	KN-G1/0
1492-JG2Q	KN-G12SP4
1492-WMG3	KN-MG12
1492-WMG4	KN-MG10
1492-WFB4	KN-F10
1492-JD3FB	KN-F10SP

## DINnectors®

The following is a list of comparable products. To obtain our high-quality KONNECT-IT terminal blocks, simply find the corresponding part number of the unit you currently use. These are approximate replacements based on UL wire size, ampacity and voltage. Please consult the technical section for specifications to determine suitability for your application. Physical size varies from manufacturer to manufacturer.

DINnectors	KONNECT-IT
DN-T12-A	KN-T12GRY
DN-T12B-A	KN-T12BLU
DN-T12BLK-A	KN-T12BLK
DN-T12BR-A	KN-T12BRN
DN-T12GRN-A	KN-T12GRN
DN-T12ORG-A	KN-T12ORG
DN-T12RED-A	KN-T12RED
DN-T12W-A	KN-T12WHT
DN-T12YEL-A	KN-T12YEL
DN-T10-A	KN-T10GRY
DN-T10B-A	KN-T10BLU
DN-T10BLK-A	KN-T10BLK
DN-T10BR-A	KN-T10BRN
DN-T10GRN-A	KN-T10GRN
DN-T10ORG-A	KN-T10ORG
DN-T10RED-A	KN-T10RED
DN-T10W-A	KN-T10WHT
DN-T10YEL-A	KN-T10YEL
DN-T8	KN-T8GRY
DN-T8B	KN-T8BLU
DN-T8BLK	KN-T8BLK
DN-T8BR	KN-T8BRN
DN-T8GRN	KN-T8GRN
DN-T8ORG	KN-T8ORG
DN-T8RED	KN-T8RED
DN-T8W	KN-T8WHT
DN-T8YEL	KN-T8YEL
DN-T6	KN-T6GRY
DN-T6B	KN-T6BLU
DN-T6BLK	KN-T6BLK
DN-T6BR	KN-T6BRN
DN-T6GRN	KN-T6GRN
DN-T6ORG	KN-T6ORG
DN-T6RED	KN-T6RED

DINnectors	KONNECT-IT
DN-T6W	KN-T6WHT
DN-T6YEL	KN-T6YEL
DN-T4	KN-T4GRY
DN-T4B	KN-T4BLU
DN-T1/0	KN-T1/0GRY
DN-T1/0B	KN-T1/0BLU
DN-D10-A	KN-D10GRY
DN-D10B	KN-D10BLU
DN-D10BLK	KN-D10BLK
DN-D10GRN	KN-D10GRN
DN-D10ORG	KN-D10ORG
DN-D10RED	KN-D10RED
DN-D10YEL	KN-D10YEL
DN-D10X-A	KN-D10X
DN-D10DR-A	KN-D10DR1
DN-D10LED1-A	KN-D10LED-24DC
DN-TL14-A	KN-TL14
DN-TL14S-A	KN-TL14S
DN-TL14SLN-A	KN-TL14SLN
DN-TL14SLP-A	KN-TL14SLP
DN-M10-A	KN-M10GRY
DN-M10B-A	KN-M10BLU
DN-G10	KN-G10
DN-G8	KN-G8
DN-G6	KN-G8
DN-G4	KN-G4
DN-G1/0	KN-G1/0
DN-MG10	KN-MG10
DN-F10	KN-F10
DN-F10L110	KN-F10L110AC or KN-F10L110DC
DN-F10L220	KN-F10L220AC or KN-F10L220DC
DN-F10L24	KN-F10L24AC or KN-F10L24DC
DN-DIS10	KN-F10-DCH
DN-KBD12	KN-KBD10

## Entelec<sup>®</sup>

The following is a list of comparable products. To obtain our high-quality KONNECT-IT terminal blocks, simply find the corresponding part number of the unit you currently use. These are approximate replacements based on UL wire size, ampacity and voltage. Please consult the technical section for specifications to determine suitability for your application. Physical size varies from manufacturer to manufacturer.

Entelec	KONNECT-IT
115 486.03	KN-T12GRY
125 486.05	KN-T12BLU
115 116.07	KN-T10GRY
125 116.01	KN-T10BLU
115 118.11	KN-T8GRY
125 118.13	KN-T8BLU
115 120.17	KN-T6GRY
125 120.11	KN-T6BLU
115 129.14	KN-T4GRY
125 129.16	KN-T4BLU
115 124.07	KN-T2GRY
125 124.01	KN-T2BLU
115 216.13	KN-T2/0GRY
125 216.15	KN-T2/0BLU
115 490.13	KN-D12GRY
125 490.15	KN-D12BLU
115 271.22	KN-D10GRY
115.541.11	KN-TL14
115 542.12	KN-TL14S
115 643.27	KN-DG12
110 251.05	KN-M10GRY
120 251.07	KN-M10BLU
165 488.27	KN-G10
165 113.16	KN-G10
165 114.17	KN-G8
165 115.10	KN-G8
165 130.23	KN-G4
165 111.14	KN-G2
160 496.26	KN-MG10
115 657.25	KN-F10
115 604.21	KN-F10SP
115 986.00	KN-KBD10

## Phoenix Contact®

The following is a list of comparable products. To obtain our high-quality KONNECT-IT terminal blocks, simply find the corresponding part number of the unit you currently use. These are approximate replacements based on UL wire size, ampacity and voltage. Please consult the technical section for specifications to determine suitability for your application. Physical size varies from manufacturer to manufacturer.

Phoenix Contact	KONNECT-IT
3003347	KN-T12GRY
3003350	KN-T12BLU
3004362	KN-T10GRY
3004388	KN-T10BLU
3004524	KN-T8GRY
3004977	KN-T8BLU
3005073	KN-T6GRY
3005086	KN-T6BLU
3006043	KN-T4GRY
3006056	KN-T4BLU
3074130	KN-T2GRY
3058350	KN-T2BLU
3213140	KN-T2/0GRY
3244601	KN-T2/0BLU
2771146	KN-D10GRY
3216053	KN-D10BLU
2715979	KN-TL14
2715966	KN-TL14S
0461018	KN-DG12
3011041	KN-TG12
2775375	KN-T12SP4
1413036	KN-M12GRY
1413078	KN-M12BLU
1402940	KN-M10GRY
1402982	KN-M10BLU
0441083	KN-G10
0441504	KN-G10
0442079	KN-G8
3003923	KN-G8
0443023	KN-G4
3074143	KN-G2
2775456	KN-G12SP4
1413117	KN-MG12
0452043	KN-MG10
3004100	KN-F10
3004126	KN-F10L24DC or KN-F10L24AC
3104013	KN-KBD10

## Weidmuller<sup>®</sup>

The following is a list of comparable products. To obtain our high-quality KONNECT-IT terminal blocks, simply find the corresponding part number of the unit you currently use. These are approximate replacements based on UL wire size, ampacity and voltage. Please consult the technical section for specifications to determine suitability for your application. Physical size varies from manufacturer to manufacturer.

Weidmuller	KONNECT-IT
102000000	KN-T12GRY
102008000	KN-T12BLU
102001000	KN-T12BLK
103771000	KN-T12BRN
102009000	KN-T12GRN
102006000	KN-T12ORG
102004000	KN-T12RED
103680000	KN-T12WHT
102002000	KN-T12YEL
102010000	KN-T10GRY
102018000	KN-T10BLU
102011000	KN-T10BLK
103781000	KN-T10BRN
102016000	KN-T10GRN
103676000	KN-T10ORG
102014000	KN-T10RED
103670000	KN-T10WHT
102012000	KN-T10YEL
102020000	KN-T8GRY
102028000	KN-T8BLU
102030000	KN-T6GRY
102038000	KN-T6BLU
102040000	KN-T4GRY
102048000	KN-T4BLU
102050000	KN-T2GRY

Weidmuller	KONNECT-IT
102058000	KN-T2BLU
102150000	KN-D12GRY
102158000	KN-D12BLU
104161000	KN-D12X
104191000	KN-D10X
178418000	KN-TL14
791703000	KN-TG12
103140000	KN-T12SP4
069716000	KN-M12GRY
069718000	KN-M12BLU
953711000	KN-M10GRY
103868000	KN-M10BLU
101000000	KN-G10
101010000	KN-G10
101020000	KN-G8
101030000	KN-G8
101040000	KN-G4
101050000	KN-G2
101650000	KN-G12SP4
130336000	KN-MG12
038026000	KN-MG10
101100000	KN-F10
101230000	KN-F10L110AC
101240000	KN-F10L220AC
101130000	KN-F10L24DC
791018000	KN-KBD10