

# Jet Pump (Centrifugal), Single-Phase Totally Enclosed Motors

C-Face Footless, 56J



## Features

- Service Factor is 1.0 or 1.5, depending on model
- Double-sealed ball bearings, mechanically locked on shaft end
- Capacitor start/capacitor run design for higher efficiency, as noted
- Automatic reset thermal protector
- 416 stainless steel threaded shaft with slinger (NEMA 56 frame)
- Drip cover not included
- UL Recognized and CSA Certified

## Applications

- Typical uses include: jet pumps and jet pump motor replacements.

**marathon**  
Motors

### Motor Shipping Schedule \*

Same or one day \*

Up to 7 days

Up to 10 days

Color indicates shipping lead time in business days. Check stock status online.

\* Certain heavy and oversized items can be shipped only via LTL. Check our website for current shipping method constraints by part number.

### Motor Specifications – Jet Pump (Centrifugal) Single-Phase Totally Enclosed Motors

Part Number*	Price	HP	Base RPM	Volts	Encl.	NEMA Design	NEMA Frame	Model No.	Weight (lb)*	Footnotes
<b>C1336</b>		1/3	3600	115/230	TEFC	N/A**	56J	5KC33FN4180X	13.5	None
<b>C465</b>		1/2				N/A**		5KC39QN3218X	24.5	15 Model on nameplate may be 5KC39QN3218GX
<b>C352</b>		1				N/A**		5KC49NN2135X	29	15
<b>C878</b>		2				N/A**		5KCR49TN2164T	38	ES, 1, 15

\* Refer to the Motor Shipping Schedule table for shipping information.

Certain heavy and oversized items can be shipped only via LTL. Check our website for current shipping method constraints by part number.

\*\* Data not available from manufacturer.

Footnotes: 1 = Capacitor Start/Capacitor Run design for reduced amperage

15 = Fixed CW Rotation, viewing opposite shaft (or lead end) of motor

ES = Energy Saver Design

Note: Please review the AutomationDirect Terms & Conditions for warranty and service on this product. Warranty service can be arranged through numerous Marathon Electric service centers. See list of service centers on our Website at [www.marathonelectric.com](#).

# Jet Pump (Centrifugal), Single-Phase Totally Enclosed Motors

C-Face Footless, 56J

## Performance Data

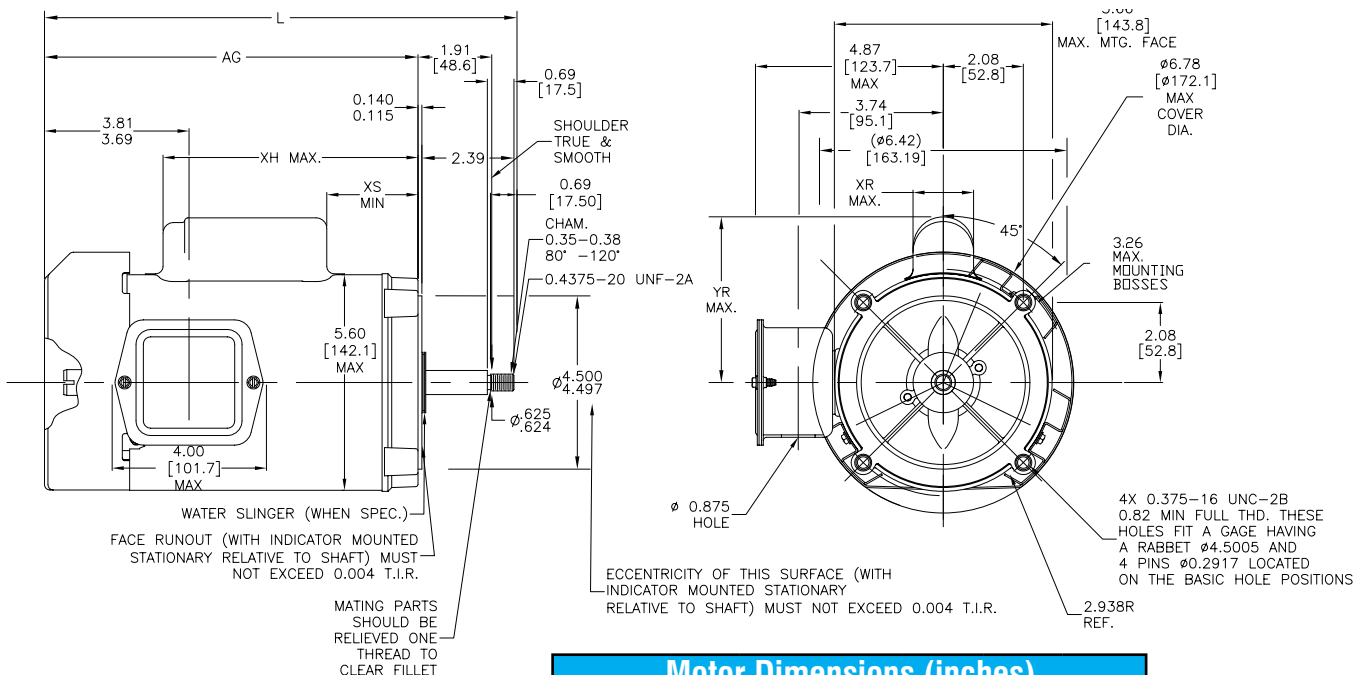
Performance Data Single-Phase 56J Frame Motors (230V/60Hz except as indicated) Jet Pump (Centrifugal) Totally Enclosed Motors											
Part Number	HP	F.L. RPM	Current @ 115V/230V (Amps)			Torque (lb-ft)			F.L. Effic. %	F.L. Power Factor	Rotor Inertia (lb-ft <sup>2</sup> )
			No Load 230V	Full Load 115/230V	Locked Rotor	Full Load	Locked Rotor	Break-down			
<b>C1336</b>	1/3	3450	2.3	5.6 / 2.8	14	0.51	1.33	1.51	N/A**	N/A**	0.012
<b>C465</b>	1/2	3450	2.8	7.4 / 3.7	20.5	0.76	1.18	2.29	N/A**	N/A**	0.017
<b>C352</b>	1	3450	3.6	13.0 / 6.5	40.5	1.52	3.07	4.14	N/A**	N/A**	0.036
<b>C878</b>	2	3450	1.27	17.8 / 8.9	52.8	3.04	4.60	6.12	N/A**	N/A**	0.055

\* Maximum Constant HP RPM is for direct-coupled loads.  
\*\* Data not available from manufacturer

## Dimensions

in [mm]

Figure 1 – C1336, C465, C352 Dimensions



Motor Dimensions (inches)						
Part Number	L	AG	XH	XR	XS	YR
<b>C1336</b>	11.87	9.28	6.61	1.60	1.43	4.34
<b>C465</b>	11.87	9.28	6.61	1.60	1.43	4.34
<b>C352</b>	12.87	10.28	7.61	1.60	2.03	4.34

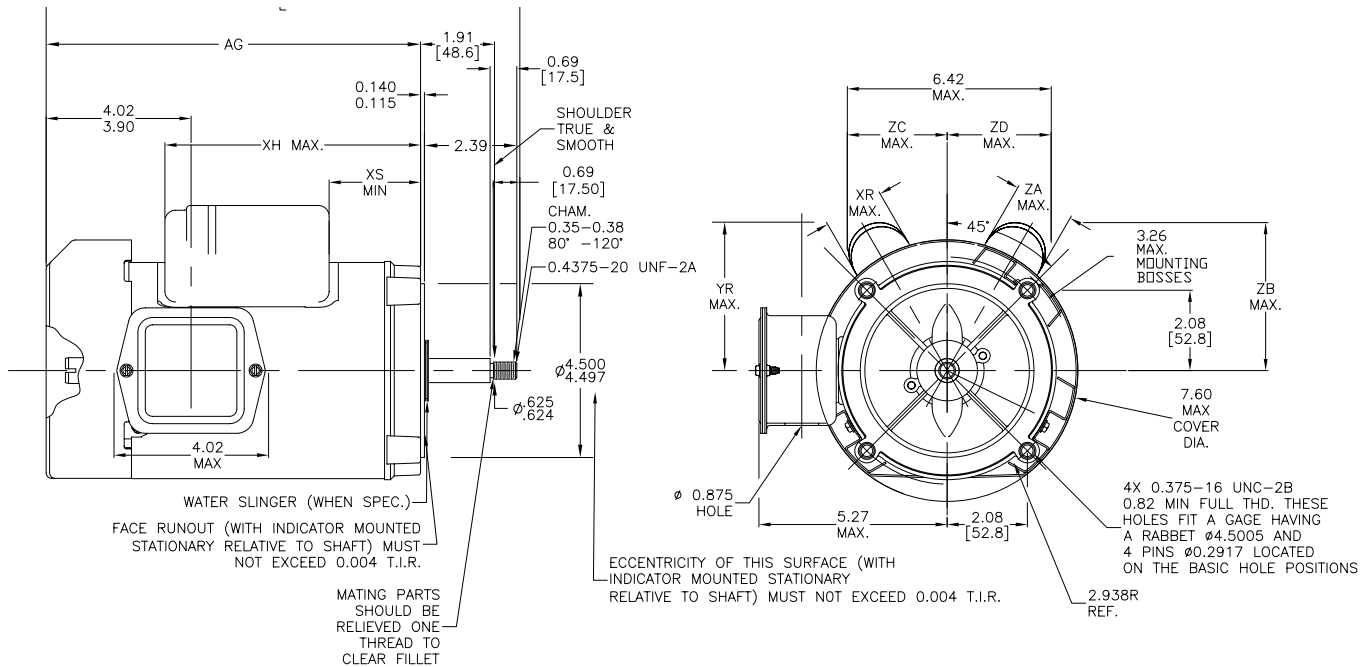
# Jet Pump (Centrifugal), Single-Phase Totally Enclosed Motors

**marathon®**  
Motors

C-Face Footless, 56J

**Dimensions**  
in [mm]

**Figure 2 – C878 Dimensions**



Motor Dimensions (inches)										
Part Number	L	AG	XH	XR	XS	YR	ZA	ZB	ZC	ZD
C878	14.56	12.16	8.63	2.15	2.88	4.68	2.40	4.90	3.20	3.38