



Pneumatic Air Preparation - AC Series Coalescing Filters



AC-444-AD AC-334-N AC-224 AC-214



Mounting bracket included.



Coalescing Filter



Typical installation example shows AF series particulate filter (left), AR series pressure regulator (center) and AC series coalescing filter (right).

NITRA® pneumatic coalescing air filters are available with 1/8", 1/4", 3/8" or 1/2" NPT female port sizes to meet pneumatic air supply filtration applications that require oil mist and moisture removal to provide the best performance of modern pneumatic system components. Available with either a semi-automatic/manual or automatic drain. All-metal bowls with sight gauge are available on 3xx and 4xx sizes. Polycarbonate or nylon bowls with metal bowl guards available on all sizes. Replaceable 0.3-micron filter elements are standard. An optional 0.01-micron filter element (purchased separately and customer installable) is available when stricter filtration is required. Provided with a mounting bracket for stand-alone applications, the modular design also enables easy field assembly for combining with NITRA pneumatic particulate filters and regulators (using modular assembly brackets purchased separately).

Features

- 1/8", 1/4", 3/8" and 1/2" NPT female port sizes
- 0.3-micron replaceable filter element standard; for stricter filtration an optional 0.01-micron filter element purchased separately is easily customer installable
- Polycarbonate and Nylon bowls with metal bowl guards available on all sizes. Metal bowls with sight gauge on 3xx and 4xx sizes.
- Semi-automatic/manual and automatic drains available
- Mounting bracket provided for stand-alone applications
- Modular design enables easy field assembly for combining with NITRA particulate filters and regulators
- 2-year warranty

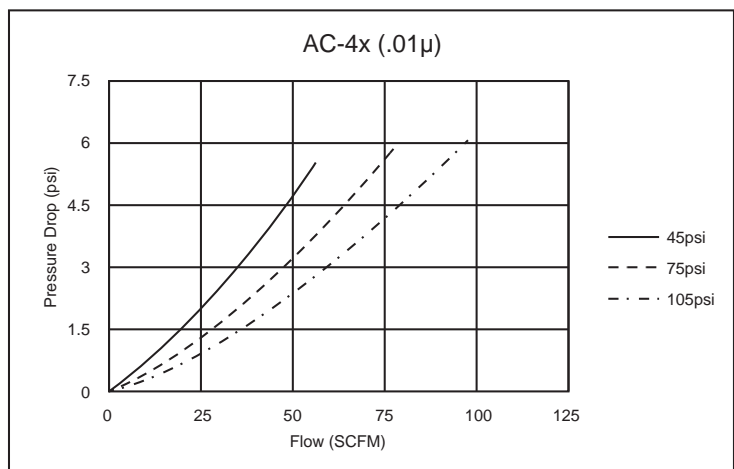
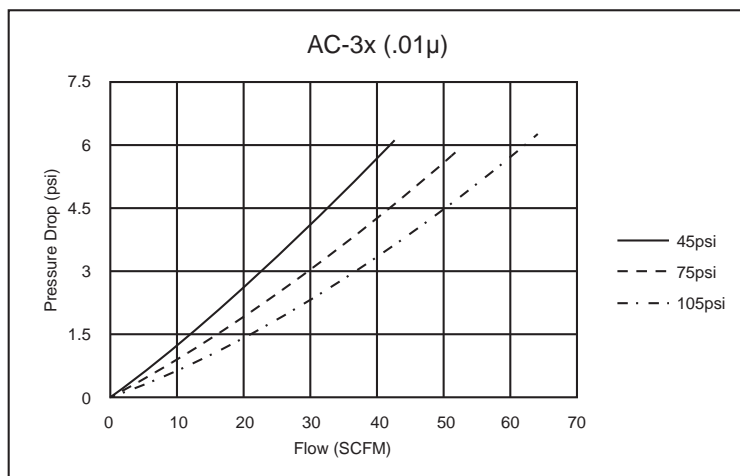
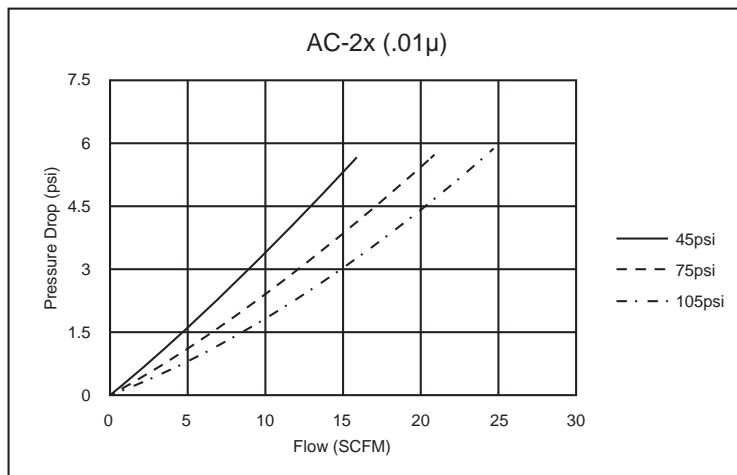


*See for
a wide variety of fitting options*

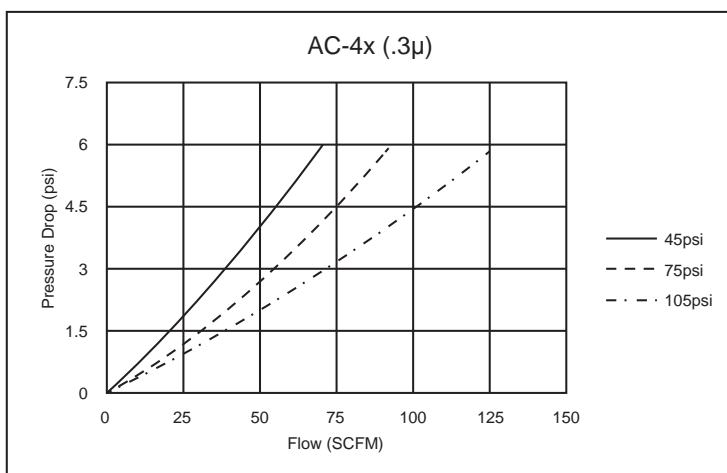
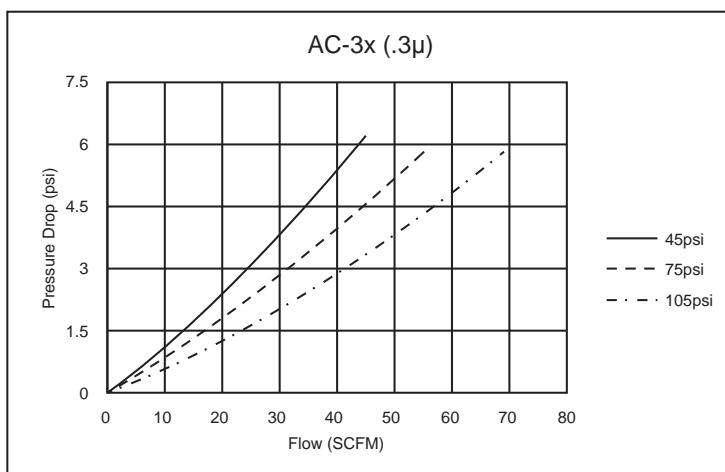
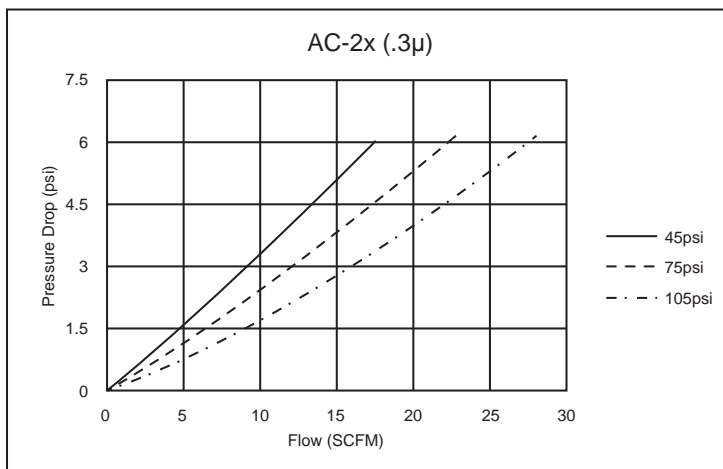
Pneumatic Air Preparation - AC Series Filters

AC Series Filters Cont.											
Part No.	Price	Weight (lbs)	Port Size (FNPT)	Drain Bowl	Drain Type	Fluid	Temperature	Filtering Grade	Operating Pressure	Maximum Pressure	Proof Pressure
AC-214		0.7	1/8"	19cc Polycarbonate with metal bowl guard	Manual/Semi-Automatic	Air	23~140°F (-4~60°C)	0.3μ, 99.9% efficiency (0.01μ, 99.9% efficiency element may be ordered separately and field installed)	20~145psi (0.14~1.0MPa) (1.4~10.0 bar)	145psi (1.0MPa) (10.0 bar)	215psi (1.5MPa) (15 bar)
AC-214-N		0.7		19cc Nylon with metal bowl guard							
AC-224		0.7	1/4"	19cc Polycarbonate with metal bowl guard							
AC-224-N		0.7		19cc Nylon with metal bowl guard							
AC-324		1.15		54.5cc Polycarbonate with metal bowl guard							
AC-324-N		1.15		54.5cc Nylon with metal bowl guard							
AC-324-D		1.2	54.5cc metal with sight gauge								
AC-324-A		1.15	Automatic	54.5cc Polycarbonate with metal bowl guard							
AC-324-AN		1.15		54.5cc Nylon with metal bowl guard							
AC-324-AD		1.2		54.5cc metal with sight gauge							
AC-334		1.15	3/8"	54.5cc Polycarbonate with metal bowl guard	Manual/Semi-Automatic						
AC-334-N		1.15		54.5cc Nylon with metal bowl guard							
AC-334-D		1.2		54.5cc metal with sight gauge							
AC-334-A		1.15		Automatic	54.5cc Polycarbonate with metal bowl guard						
AC-334-AN		1.15			54.5cc Nylon with metal bowl guard						
AC-334-AD		1.2			54.5cc metal with sight gauge						
AC-444		1.8	1/2"	89cc Polycarbonate with metal bowl guard	Manual/Semi-Automatic						
AC-444-N		1.8		89cc Nylon with metal bowl guard							
AC-444-D		1.8		89cc metal with sight gauge							
AC-444-A		1.8		Automatic	89cc Polycarbonate with metal bowl guard						
AC-444-AN		1.8			89cc Nylon with metal bowl guard						
AC-444-AD		1.8			89cc metal with sight gauge						

Performance Charts - .01 μ Coalescing Filters

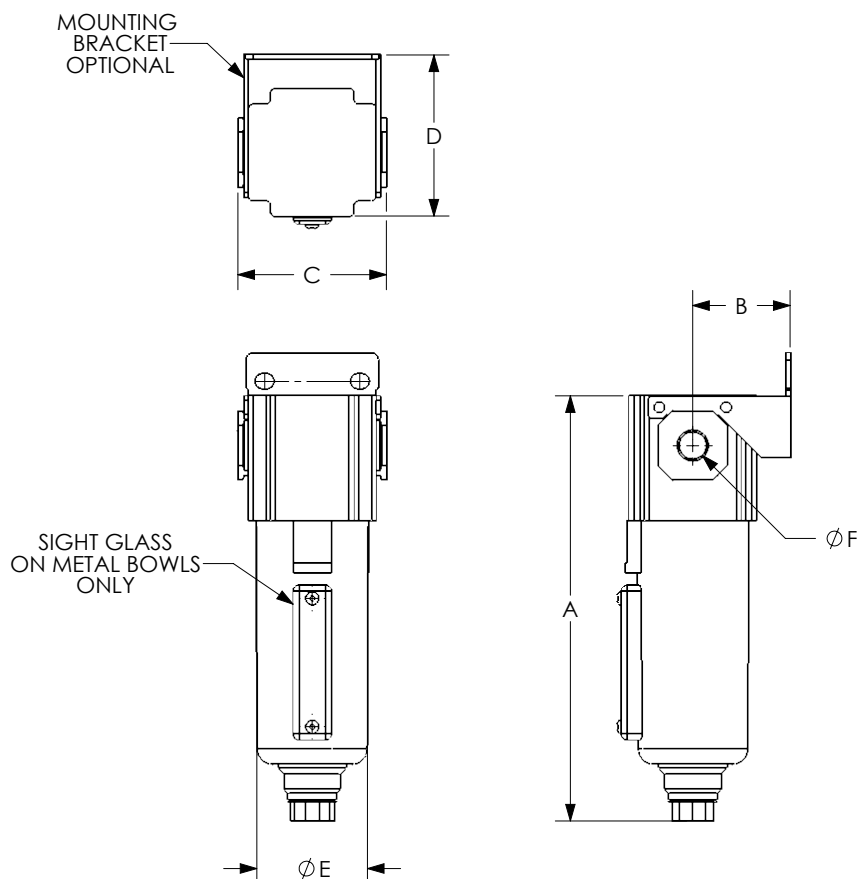


Performance Charts - $.3\mu$ Coalescing Filters



Pneumatic Air Preparation - AC Series Filters

AC Series Filter Dimensions - mm (inches)						
Part No.	A	B	C	D	ØE	ØF
AC-214	137.0 [5.39]	33.0 [1.30]	52.5 [2.07]	54.5 [2.15]	36.1 [1.42]	1/8
AC-214-N	137.0 [5.39]	33.0 [1.30]	52.5 [2.07]	54.5 [2.15]	36.1 [1.42]	1/8
AC-224	137.0 [5.39]	33.0 [1.30]	52.5 [2.07]	54.5 [2.15]	36.1 [1.42]	1/4
AC-224-N	137.0 [5.39]	33.0 [1.30]	52.5 [2.07]	54.5 [2.15]	36.1 [1.42]	1/4
AC-324	179.0 [7.05]	41.0 [1.61]	62.5 [2.46]	67.8 [2.67]	46.5 [1.83]	1/4
AC-324-N	179.0 [7.05]	41.0 [1.61]	62.5 [2.46]	67.8 [2.67]	46.5 [1.83]	1/4
AC-324-D	179.0 [7.05]	41.0 [1.61]	62.5 [2.46]	67.8 [2.67]	46.5 [1.83]	1/4
AC-324-A	179.0 [7.05]	41.0 [1.61]	62.5 [2.46]	67.8 [2.67]	46.5 [1.83]	1/4
AC-324-AN	179.0 [7.05]	41.0 [1.61]	62.5 [2.46]	67.8 [2.67]	46.5 [1.83]	1/4
AC-324-AD	179.0 [7.05]	41.0 [1.61]	62.5 [2.46]	67.8 [2.67]	46.5 [1.83]	1/4
AC-334	179.0 [7.05]	41.0 [1.61]	62.5 [2.46]	67.8 [2.67]	46.5 [1.83]	3/8
AC-334-N	179.0 [7.05]	41.0 [1.61]	62.5 [2.46]	67.8 [2.67]	46.5 [1.83]	3/8
AC-334-D	179.0 [7.05]	41.0 [1.61]	62.5 [2.46]	67.8 [2.67]	46.5 [1.83]	3/8
AC-334-A	179.0 [7.05]	41.0 [1.61]	62.5 [2.46]	67.8 [2.67]	46.5 [1.83]	3/8
AC-334-AN	179.0 [7.05]	41.0 [1.61]	62.5 [2.46]	67.8 [2.67]	46.5 [1.83]	3/8
AC-334-AD	179.0 [7.05]	41.0 [1.61]	62.5 [2.46]	67.8 [2.67]	46.5 [1.83]	3/8
AC-444	202.4 [7.97]	50.0 [1.97]	80.0 [3.15]	84.0 [3.31]	58.0 [2.28]	1/2
AC-444-N	202.4 [7.97]	50.0 [1.97]	80.0 [3.15]	84.0 [3.31]	58.0 [2.28]	1/2
AC-444-D	202.4 [7.97]	50.0 [1.97]	80.0 [3.15]	84.0 [3.31]	58.0 [2.28]	1/2
AC-444-A	202.4 [7.97]	50.0 [1.97]	80.0 [3.15]	84.0 [3.31]	58.0 [2.28]	1/2
AC-444-AN	202.4 [7.97]	50.0 [1.97]	80.0 [3.15]	84.0 [3.31]	58.0 [2.28]	1/2
AC-444-AD	202.4 [7.97]	50.0 [1.97]	80.0 [3.15]	84.0 [3.31]	58.0 [2.28]	1/2



Note: Unit dimensions are the same for listed models; port NPT varies based on model.

See our Web site

for complete Engineering drawings.



Part No. AGP-21



Part No. ADB-21



Part No. AB-4T



Part No. AB-4L



Part No. AB-4U

Pneumatic Air Preparation Accessories			
Part No.	Price	Description	Weight (lbs)
AGP-21		NITRA pneumatic gauge port adapter plate, 1/8 inch NPT female port, with mounting screws. Easy field assembly with NITRA pneumatic AR-2 series regulators and AFR-2 series filter / regulators.	0.03
AGP-32		NITRA pneumatic gauge port adapter plate, 1/4 inch NPT female port, with mounting screws. Easy field assembly with NITRA pneumatic AR-3, AR-4 and AR-6 series regulators and AFR-3, AFR-4 and AFR-6 series filter / regulators.	0.04
ADB-21		NITRA pneumatic distribution block with four (4) 1/8 inch NPT female ports. Modular design enables easy field assembly with NITRA pneumatic AF-21 series filters, AR-21 series regulators, AL-21 series lubricators and AFR-21 series filter / regulators.	0.1
ADB-22		NITRA pneumatic distribution block with four (4) 1/4 inch NPT female ports. Modular design enables easy field assembly with NITRA pneumatic AF-22 series filters, AR-22 series regulators, AL-22 series lubricators and AFR-22 series filter / regulators.	0.1
ADB-32		NITRA pneumatic distribution block with four (4) 1/4 inch NPT female ports. Modular design enables easy field assembly with NITRA pneumatic AF-32 series filters, AR-32 series regulators, AL-32 series lubricators and AFR-32 series filter / regulators.	0.2
ADB-33		NITRA pneumatic distribution block with four (4) 3/8 inch NPT female ports. Modular design enables easy field assembly with NITRA pneumatic AF-33 series filters, AR-33 series regulators, AL-33 series lubricators and AFR-33 series filter / regulators.	0.2
ADB-44		NITRA pneumatic distribution block with four (4) 1/2 inch NPT female ports. Modular design enables easy field assembly with NITRA pneumatic AF-44 series filters, AR-44 series regulators and AFR-44 series filter / regulators.	0.4
AB-2T		NITRA pneumatic modular assembly and mounting T-bracket with two mounting tangs, used to assemble and mount individual NITRA AF-2 series filters, AR-2 series regulators, AL-2 series lubricators and AFR-2 series filter/regulators as a combined unit	0.2
AB-2L		NITRA pneumatic modular assembly and mounting L-bracket with one mounting tang, used to assemble and mount individual NITRA AF-2 series filters, AR-2 series regulators, AL-2 series lubricators and AFR-2 series filter/regulators as a combined unit	0.2
AB-2U		NITRA pneumatic modular assembly U-bracket (no mounting tangs), used to assemble individual NITRA AF-2 series filters, AR-2 series regulators, AL-2 series lubricators and AFR-2 series filter/regulators as a combined unit	0.1
AB-3T		NITRA pneumatic modular assembly and mounting T-bracket with two mounting tangs, used to assemble and mount individual NITRA AF-3 series filters, AR-3 series regulators, AL-3 series lubricators and AFR-3 series filter/regulators as a combined unit	0.3
AB-3L		NITRA pneumatic modular assembly and mounting L-bracket with one mounting tang, used to assemble and mount individual NITRA AF-3 series filters, AR-3 series regulators, AL-3 series lubricators and AFR-3 series filter/regulators as a combined unit	0.3
AB-3U		NITRA pneumatic modular assembly U-bracket (no mounting tangs), used to assemble individual NITRA AF-3 series filters, AR-3 series regulators, AL-3 series lubricators and AFR-3 series filter/regulators as a combined unit	0.2
AB-4T		NITRA pneumatic modular assembly and mounting T-bracket with two mounting tangs, used to assemble and mount individual NITRA AF-4 series filters, AR-4 series regulators, AL-4 series lubricators and AFR-4 series filter/regulators as a combined unit	0.5
AB-4L		NITRA pneumatic modular assembly and mounting L-bracket with one mounting tang, used to assemble and mount individual NITRA AF-4 series filters, AR-4 series regulators, AL-4 series lubricators and AFR-4 series filter/regulators as a combined unit	0.5
AB-4U		NITRA pneumatic modular assembly U-bracket (no mounting tangs), used to assemble individual NITRA AF-4 series filters, AR-4 series regulators, AL-4 series lubricators and AFR-4 series filter/regulators as a combined unit	0.4
AB-6T		NITRA pneumatic modular assembly and mounting T-bracket with two mounting tangs, used to assemble and mount individual NITRA AF-6 series filters, AR-6 series regulators, AL-6 series lubricators and AFR-6 series filter/regulators as a combined unit	1.3
AB-6L		NITRA pneumatic modular assembly and mounting L-bracket with one mounting tang, used to assemble and mount individual NITRA AF-6 series filters, AR-6 series regulators, AL-6 series lubricators and AFR-6 series filter/regulators as a combined unit	1.2
AB-6U		NITRA pneumatic modular assembly U-bracket (no mounting tangs), used to assemble individual NITRA AF-6 series filters, AR-6 series regulators, AL-6 series lubricators and AFR-6 series filter/regulators as a combined unit	0.8



Part No. AFE2-43



Part No. AFE2-41



Part No. AFE-24



Part No. AFE-35

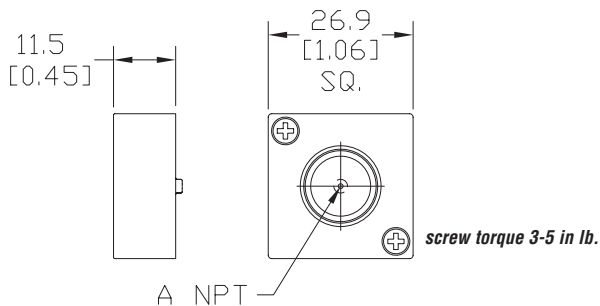
Pneumatic Air Preparation Accessories			
Part No.	Price	Description	Weight (lbs)
NITRA Gen 2 Particulate Filters			
AFE2-23		NITRA particulate filter element, replacement, 40 micron particles, high-density polyethylene (HDPE). For use with AF-2 series filters or AFR-2 series filter regulators.	0.01
AFE2-33		NITRA particulate filter element, replacement, 40 micron particles, high-density polyethylene (HDPE). For use with AF-3 series filters or AFR-3 series filter regulators.	0.01
AFE2-43		NITRA particulate filter element, replacement, 40 micron particles, high-density polyethylene (HDPE). For use with AF-4 series filters or AFR-4 series filter regulators.	0.01
AFE2-63		NITRA particulate filter element, replacement, 40 micron particles, high-density polyethylene (HDPE). For use with AF-6 series filters or AFR-6 series filter regulators.	0.04
AFE2-21		NITRA particulate filter element, replacement, 5 micron particles, high-density polyethylene (HDPE). For use with AF-2 series filters or AFR-2 series filter regulators.	0.01
AFE2-31		NITRA particulate filter element, replacement, 5 micron particles, high-density polyethylene (HDPE). For use with AF-3 series filters or AFR-3 series filter regulators.	0.01
AFE2-41		NITRA particulate filter element, replacement, 5 micron particles, high-density polyethylene (HDPE). For use with AF-4 series filters or AFR-4 series filter regulators.	0.01
AFE2-61		NITRA particulate filter element, replacement, 5 micron particles, high-density polyethylene (HDPE). For use with AF-6 series filters or AFR-6 series filter regulators.	0.04
NITRA Coalescing Filters			
AFE-24		NITRA coalescing oil removal filter element, replacement, 0.3 micron particles, borosilicate glass microfiber. For use with AC-2 series coalescing filters.	0.05
AFE-34		NITRA coalescing oil removal filter element, replacement, 0.3 micron particles, borosilicate glass microfiber. For use with AC-3 series coalescing filters.	0.05
AFE-44		NITRA coalescing oil removal filter element, replacement, 0.3 micron particles, borosilicate glass microfiber. For use with AC-4 series coalescing filters.	0.1
AFE-25		NITRA coalescing oil removal filter element, replacement, 0.01 micron particles, borosilicate glass microfiber. For use with AC-2 series coalescing filters.	0.04
AFE-35		NITRA coalescing oil removal filter element, replacement, 0.01 micron particles, borosilicate glass microfiber. For use with AC-3 series coalescing filters.	0.05
AFE-45		NITRA coalescing oil removal filter element, replacement, 0.01 micron particles, borosilicate glass microfiber. For use with AC-4 series coalescing filters.	0.1

Dimensions

mm [inches]

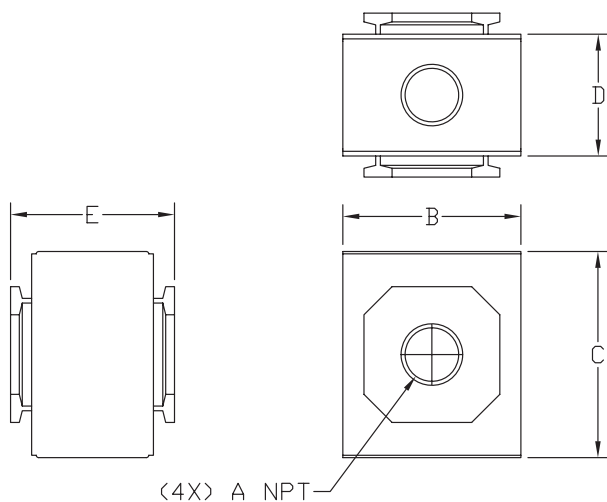
AGP-x

PART NO.	A NPT
APG-21	1/8
APG-32	1/4



ADB-x

PART NO.	A NPT	DIM B	DIM C	DIM D	DIM E
ADB-21	1/8	30.0 [1.18]	36.0 [1.42]	19.5 [0.77]	28.5 [1.12]
ADB-22	1/4	30.0 [1.18]	36.0 [1.42]	19.5 [0.77]	28.5 [1.12]
ADB-32	1/4	38.0 [1.50]	44.0 [1.73]	26.0 [1.02]	35.0 [1.38]
ADB-33	3/8	38.0 [1.50]	44.0 [1.73]	26.0 [1.02]	35.0 [1.38]
ADB-44	1/2	52.0 [2.05]	52.0 [2.05]	30.0 [1.18]	42.0 [1.65]



See our Web site
for complete Engineering drawings.

Dimensions

mm [inches]

AB-xT

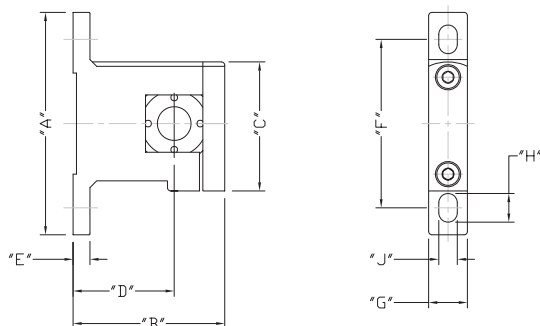


TABLE 1									
PART NUMBER	DIM "A"	DIM "B"	DIM "C"	DIM "D"	DIM "E"	DIM "F"	DIM "G"	DIM "H"	DIM "J"
AB-2T	66.0 [2.60]	45.0 [1.77]	38.3 [1.51]	30.0 [1.18]	5.0 [0.20]	50.0 [1.97]	11.5 [0.45]	8.5 [0.33]	5.5 [0.22]
AB-3T	88.0 [3.46]	60.5 [2.38]	49.3 [1.94]	41.5 [1.63]	7.0 [0.28]	70.0 [2.76]	12.5 [0.49]	9.0 [0.35]	6.5 [0.26]
AB-4T	104.0 [4.09]	76.0 [2.99]	58.5 [2.30]	50.0 [1.97]	7.0 [0.28]	80.0 [3.15]	15.5 [0.61]	12.0 [0.47]	8.6 [0.34]
AB-6T	128.0 [5.04]	104.0 [4.09]	79.5 [3.13]	70.0 [2.76]	10.0 [0.39]	100.0 [3.94]	19.5 [0.77]	16.0 [0.63]	11.0 [0.43]

AB-xL

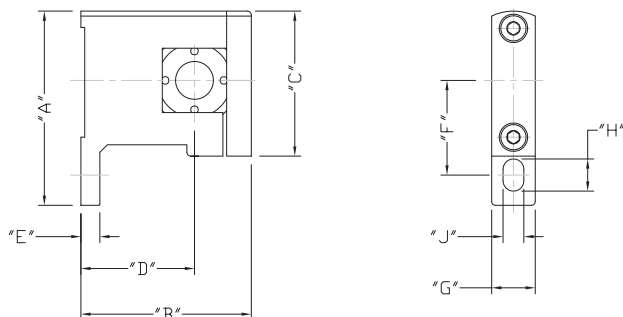


TABLE 1									
PART NUMBER	DIM "A"	DIM "B"	DIM "C"	DIM "D"	DIM "E"	DIM "F"	DIM "G"	DIM "H"	DIM "J"
AB-2L	51.3 [2.02]	45.0 [1.77]	38.3 [1.51]	30.0 [1.18]	5.0 [0.20]	25.0 [0.98]	11.5 [0.45]	8.5 [0.33]	5.5 [0.22]
AB-3L	68.6 [2.70]	60.5 [2.38]	49.3 [1.94]	41.5 [1.63]	7.0 [0.28]	35.0 [1.38]	12.5 [0.49]	9.0 [0.35]	6.5 [0.26]
AB-4L	79.5 [3.13]	76.0 [2.99]	58.5 [2.30]	50.0 [1.97]	7.0 [0.28]	40.0 [1.57]	15.5 [0.61]	12.0 [0.47]	8.6 [0.34]
AB-6L	103.5 [4.07]	104.0 [4.09]	79.5 [3.13]	70.0 [2.76]	10.0 [0.39]	50.0 [1.97]	19.5 [0.77]	16.0 [0.63]	11.0 [0.43]

See our Web site
for complete Engineering drawings.

Dimensions

mm [inches]

AB-xU

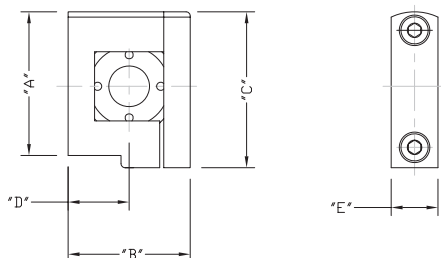


TABLE 1					
PART NUMBER	DIM "A"	DIM "B"	DIM "C"	DIM "D"	DIM "E"
AB-2U	35.5 [1.39]	30.0 [1.18]	38.3 [1.51]	15.0 [0.59]	11.5 [0.45]
AB-3U	43.8 [1.72]	38.0 [1.50]	49.3 [1.94]	19.5 [0.75]	12.5 [0.49]
AB-4U	52.5 [2.07]	52.0 [2.05]	58.5 [2.30]	26.0 [1.02]	15.5 [0.61]
AB-6U	76.5 [3.01]	68.0 [2.68]	79.5 [3.13]	34.0 [1.34]	19.5 [0.77]

See our Web site [for complete Engineering drawings.](#)