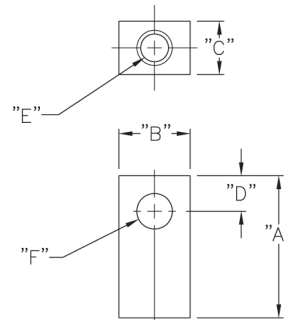


# D-Series Heavy Duty Pneumatic Cylinders – Accessories

| D-Series Heavy Duty Pneumatic Cylinder Accessories |  |         |         |       |
|--|--|---------|---------|-------|
| Part Number  | Description  | Pcs/Pkg | Wt (lb) | Price |
| <b>DRE-1</b>                                       | Cylinder rod eye, 7/16-20 thread, for 1-1/2, 2 and 2-1/2 inch bore NITRA NFPA D-series pneumatic cylinders                               | 1       | 0.4     |       |
| <b>DPC-3</b>                                       | NFPA style MP2 cylinder rear clevis bracket and attaching hardware, for 2-1/2 inch bore NITRA NFPA D-series pneumatic cylinders          | 1       | 0.8     |       |
| <b>DPA-2</b>                                       | NFPA style MP4 cylinder rear pivot eye and attaching hardware, for 2 inch bore NITRA NFPA D-series pneumatic cylinders                   | 1       | 0.5     |       |
| <b>DPA-4</b>                                       | NFPA style MP4 cylinder rear pivot eye and attaching hardware, for 3-1/4 inch bore NITRA NFPA D-series pneumatic cylinders               | 1       | 1.3     |       |
| <b>DPA-5</b>                                       | NFPA style MP4 cylinder rear pivot eye and attaching hardware, for 4 inch bore NITRA NFPA D-series pneumatic cylinders                   | 1       | 1.4     |       |
| <b>DFM-1</b>                                       | NFPA style MF1 or MF2 cylinder flange mounting plate and attaching hardware, for 1-1/2 inch bore NITRA NFPA D-series pneumatic cylinders | 1       | 0.3     |       |
| <b>DFM-3</b>                                       | NFPA style MF1 or MF2 cylinder flange mounting plate and attaching hardware, for 2-1/2 inch bore NITRA NFPA D-series pneumatic cylinders | 1       | 0.5     |       |
| <b>DFM-4</b>                                       | NFPA style MF1 or MF2 cylinder flange mounting plate and attaching hardware, for 3-1/4 inch bore NITRA NFPA D-series pneumatic cylinders | 1       | 3.0     |       |

## Rod Eye Dimensions

inches [mm]

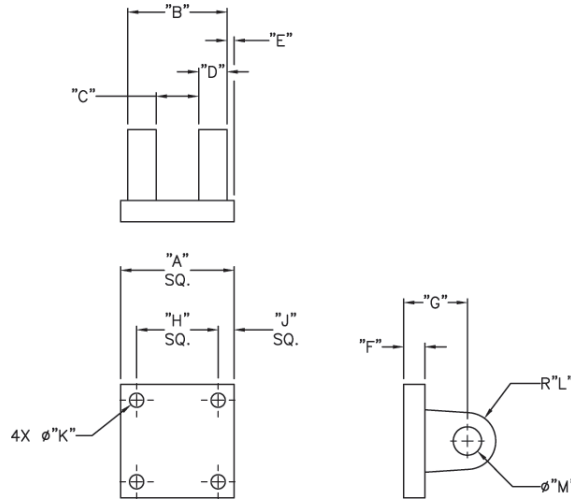


| Rod Eye Dimension Table |                |                |                |                |               |                  |
|-------------------------|----------------|----------------|----------------|----------------|---------------|------------------|
| Part #                  | A              | B              | C              | D              | E             | (Dia) F          |
| DRE-1                   | 2.00<br>[50.8] | 1.00<br>[25.4] | 0.75<br>[19.1] | 0.50<br>[12.7] | 7/16-20 x 3/4 | ø0.50<br>[ø12.7] |

# D-Series Heavy Duty Pneumatic Cylinders – Accessories

## Rear Clevis Dimensions

inches [mm]

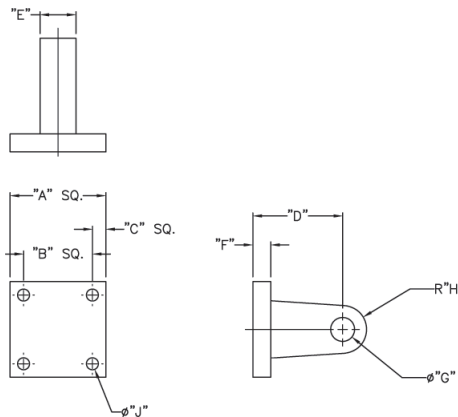


*Note: Comes with pivot pin installed.*

| Rear Clevis Dimension Table |                |                |                |                |                |               |                |                |                |                 |                    |                  |
|-----------------------------|----------------|----------------|----------------|----------------|----------------|---------------|----------------|----------------|----------------|-----------------|--------------------|------------------|
| Part #                      | A              | B              | C              | D              | E              | F             | G              | H              | J              | (Dia) K         | (R) L              | (Dia) M          |
| DPC-3                       | 3.00<br>[76.2] | 1.76<br>[44.7] | 0.76<br>[19.3] | 0.50<br>[12.7] | 0.62<br>[15.7] | 0.37<br>[9.5] | 1.13<br>[28.6] | 2.19<br>[55.6] | 0.41<br>[10.3] | ø0.34<br>[ø8.6] | R 0.50<br>[R 12.7] | ø0.50<br>[ø12.8] |

## Rear Pivot Eye Dimensions

inches [mm]

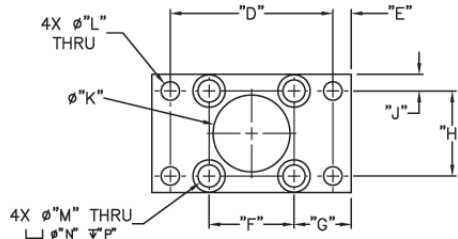
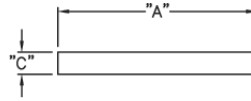


| Rear Pivot Eye Dimension Table |                 |                |                |                |                |                |                  |                    |                  |
|--------------------------------|-----------------|----------------|----------------|----------------|----------------|----------------|------------------|--------------------|------------------|
| Part #                         | A               | B              | C              | D              | E              | F              | (Dia) G          | (R) H              | (Dia) J          |
| DPA-2                          | 2.50<br>[63.5]  | 1.84<br>[46.7] | 0.33<br>[8.4]  | 1.13<br>[28.6] | 0.75<br>[19.1] | 0.37<br>[9.50] | ø0.5<br>[ø12.7]  | R 0.50<br>[R 12.7] | ø0.34<br>[ø8.6]  |
| DPA-4                          | 3.80<br>[96.5]  | 2.77<br>[70.4] | 0.52<br>[13.1] | 1.87<br>[47.6] | 1.25<br>[31.8] | 0.63<br>[15.9] | ø0.75<br>[ø19.1] | R 0.75<br>[R 19.1] | ø0.41<br>[ø10.4] |
| DPA-5                          | 4.50<br>[114.3] | 3.32<br>[84.3] | 0.59<br>[15.0] | 1.87<br>[47.6] | 1.25<br>[31.8] | 0.63<br>[15.9] | ø0.75<br>[ø19.1] | R 0.75<br>[R 19.1] | ø0.41<br>[ø10.4] |

# D-Series Heavy Duty Pneumatic Cylinders – Accessories

## Flange Attachment Dimensions

inches [mm]



**Flange Attachment Dimension Table**

| Part # | A               | B              | C              | D               | E              | F              | G              | H              | J              | (Dia) K                       | (Dia) L                       | (Dia) M                       | (Dia) N                       | P                            |
|--------|-----------------|----------------|----------------|-----------------|----------------|----------------|----------------|----------------|----------------|-------------------------------|-------------------------------|-------------------------------|-------------------------------|------------------------------|
| DFM-1  | 3.38<br>[85.9]  | 2.00<br>[50.8] | 0.38<br>[9.7]  | 2.75<br>[69.9]  | 0.31<br>[7.9]  | 1.44<br>[36.6] | 0.97<br>[24.6] | 1.44<br>[36.6] | 0.28<br>[7.1]  | $\phi$ 1.30<br>[ $\phi$ 33.0] | $\phi$ 0.31<br>[ $\phi$ 7.9]  | $\phi$ 0.38<br>[ $\phi$ 9.7]  | $\phi$ 0.66<br>[ $\phi$ 16.8] | 0.16<br>[4.1]                |
| DFM-3  | 4.63<br>[117.6] | 3.00<br>[76.2] | 0.38<br>[9.7]  | 3.88<br>[98.6]  | 0.38<br>[9.7]  | 2.19<br>[55.6] | 1.22<br>[31.0] | 2.19<br>[55.6] | 0.41<br>[10.4] | $\phi$ 1.74<br>[ $\phi$ 44.2] | $\phi$ 0.38<br>[ $\phi$ 9.7]  | $\phi$ 0.38<br>[ $\phi$ 9.7]  | $\phi$ 0.66<br>[ $\phi$ 16.8] | 0.16<br>[4.1]                |
| DFM-4  | 5.50<br>[139.7] | 3.75<br>[95.3] | 0.63<br>[16.0] | 4.69<br>[119.1] | 0.41<br>[10.4] | 2.75<br>[69.9] | 1.38<br>[35.1] | 2.75<br>[69.9] | 0.50<br>[12.7] | $\phi$ 2.06<br>[ $\phi$ 52.3] | $\phi$ 0.44<br>[ $\phi$ 11.2] | $\phi$ 0.42<br>[ $\phi$ 10.7] | $\phi$ 0.82<br>[ $\phi$ 20.8] | $\phi$ 0.36<br>[ $\phi$ 9.1] |



**D-Series Heavy Duty Pneumatic Cylinder Replacement Seal Kit**

| Part Number   | Description   | Pcs/Pkg | Wt (lb) | Price |
|---------------|---|---------|---------|-------|
| <b>DSK-24</b> | Seal kit, replacement, for NITRA D24 series pneumatic cylinders. Includes 4 Buna-N seals and PTFE rod wiper and wear strip. | 1       | 0.1     |       |
| <b>DSK-40</b> | Seal kit, replacement, for NITRA D40 series pneumatic cylinders. Includes 4 Buna-N seals and PTFE rod wiper and wear strip. | 1       | 0.1     |       |

| Position Switch Cross Reference Chart |  |               |                     |
|---------------------------------------|--|---------------|---------------------|
| NITRA Switch Type                     | Cylinder Brand (may fit some of these cylinders)           | Photo Example | Groove Illustration |
| CPS<br>CPSF                           | NITRA A-Series, D-Series, F-Series                         |               |                     |
| CPS9C                                 | DE-STA-CO<br>Robohand<br>SMC<br>Compact Air                |               |                     |
| CPS9D                                 | Fabco<br>Numatics<br>Rotomation                            |               |                     |
| CPS9F                                 | NITRA G-Series<br>Fabco<br>Festo<br>Numatics<br>Rotomation |               |                     |
| CPS9H                                 | NITRA E-Series<br>NITRA H-Series                           |               |                     |
| CPS9M                                 | Norgren  |               |                     |
| CPS9Q                                 | NITRA G-Series<br>Parker                                   |               |                     |
| CPS9T                                 | SMC  |               |                     |