

SLV Series Pneumatic Lockout Valves Accessories

Features

- Silencers (mufflers) are aluminum construction
- High flow rates needed for safety lockout valves
- Pressure indicator pops out when pressure of 5psi or more is present



HVM-34N



SLV-PU

Note: HVM series exhaust silencers have a maximum pressure of 250PSI (17 bar).

NITRA SLV Series Pneumatic Lockout Valve Accessories			
Part No.	Description	Price	Weight (lbs)
HVM-18N	NITRA pneumatic exhaust silencer, aluminum, cylindrical, Cv=2, 1/8in male NPT		0.1
HVM-14N	NITRA pneumatic exhaust silencer, aluminum, cylindrical, Cv=2.7, 1/4in male NPT		0.1
HVM-38N	NITRA pneumatic exhaust silencer, aluminum, cylindrical, Cv=3.2, 3/8in male NPT		0.1
HVM-38N-H	NITRA pneumatic exhaust silencer, aluminum, cylindrical, Cv=4.9, 3/8in male NPT		0.2
HVM-12N	NITRA pneumatic exhaust silencer, aluminum, cylindrical, Cv=5.9, 1/2in male NPT		0.2
HVM-34N	NITRA pneumatic exhaust silencer, aluminum, cylindrical, Cv=5.9, 3/4in male NPT		0.2
HVM-34N-H	NITRA pneumatic exhaust silencer, aluminum, cylindrical, Cv=13.5, 3/4in male NPT		0.6
HVM-1N	NITRA pneumatic exhaust silencer, aluminum, cylindrical, Cv=16.7, 1in male NPT		0.6
HVM-114N	NITRA pneumatic exhaust silencer, aluminum, cylindrical, Cv=17.4, 1-1/4in male NPT		0.6
SLV-PU	NITRA pneumatic pop up pressure indicator, 5 psi, 1/8in male NPT		0.1

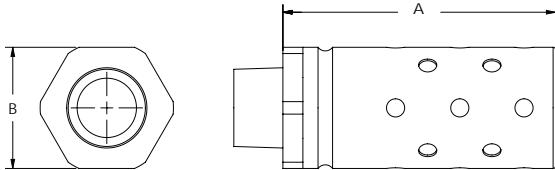


SLV Series Pneumatic Lockout Valves Accessories

Nitra High Volume Silencers (Mufflers)

Dimensions

inches [mm]

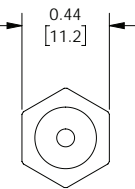
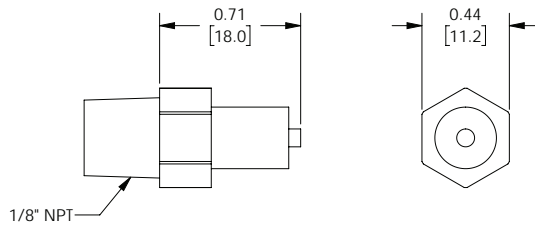


Muffer Dimensions		
Part #	A	B
HVM-18N	1.6 [40.64]	0.8 [20.32]
HVM-14N	1.6 [40.64]	0.8 [20.32]
HVM-38N	1.6 [40.64]	0.8 [20.32]
HVM-38N-H	2.9 [73.66]	1.3 [33.02]
HVM-12N	2.9 [73.66]	1.3 [33.02]
HVM-34N	2.9 [73.66]	1.3 [33.02]
HVM-34N-H	4.5 [114.30]	2.0 [50.80]
HVM-1N	4.5 [114.30]	2.0 [50.80]
HVM-114N	4.5 [114.30]	2.0 [50.80]

Nitra Pop Up Pressure Indicator

Dimensions

inches [mm]



See our website [for complete Engineering drawings.](#)