



# Solenoid Valve 2 Way / 2 Position N.C. Direct Acting



**21A31K1V25-T3-A Valve Shown**

Direct acting solenoid valve for use with water and other compatible fluids.

Minimum operational pressure is not required.

The materials used and the tests carried out ensure maximum reliability and duration.

## Features

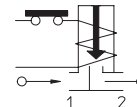
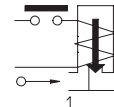
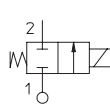
- Use in vending and other potable water applications
- G1/8 or G1/4
- Coil temperature class: class H (180°C - 356°F)
- Recommended ambient temperature range -20°C to +60°C (-4°F to +140°F)
- Electrical conformity IEC 335
- Protection degree IP 65 EN 60529 (DIN 40050) with coil fitted by connector.
- NSF/ANSI 169
- Accepts DIN 43650A cables



See our website

for a variety of cable options.

Gaskets	Temperature		Medium
V=FKM (fluoroelastomer)	-10°C (14°F)	+140°C (284°F)	Water, Air, Steam



Solenoid Valve 2/2 Way N.C. Direct Acting													
Part No.	Port Size	Max Viscosity	ø mm	Kv (l/mn)	Cv	Coil Voltage	Power*	Operating Pressure (bar/psi)			Price	Weight (lbs)	Drawing Link
		cSt						Min	Max	Max Operating Pressure Differential			
21A31K1V25-T3-A	G1/8	53	2.5	3.2	0.22	120VAC (60Hz) 110VAC (50Hz)	15VA	0 / 0	40 / 580	14 / 203.1		0.75	<a href="#">PDF</a>
21A31K1V25-T3-B						24VDC	11W			9 / 130.5		0.76	<a href="#">PDF</a>
21A22K1V25-T3-A	G1/4					120VAC (60Hz) 110VAC (50Hz)	15VA			14 / 203.1		0.72	<a href="#">PDF</a>
21A22K1V25-T3-B						24VDC	11W			9 / 130.5		0.73	<a href="#">PDF</a>

Materials	
Body	Low lead brass
Armature Tube	Stainless steel AISI series 300
Fixed Core	Stainless steel AISI series 400
Plunger	Stainless steel AISI series 400
Phase Displacement Ring	Gold plated copper
Spring	Stainless steel AISI series 300
Seal	V=FKM (fluoroelastomer)
Orifice	Stainless steel AISI series 300
Electrical Connections	18mm DIN 43650 Form A With connector EN 175301-803 paragraph 5.3.1 Protection degree IP 65 EN 60529 (DIN 40050)

\* NOMINAL VOLTAGE TOLERANCES: AC + 10% - 15%  
DC + 10% - 5%

The power values are indicative, as they change as a function of the magnetic kit used and of the application sector of reference. Other voltages and power absorptions are available.

ODE 10-09-2018

To obtain the most current agency approval information, see the Agency Approval Checklist section on the specific part number's web page.



# Solenoid Valve 2 Way / 2 Position N.C. Direct Acting



**21A31K1V45-WT3-A  
Valve Shown**

Direct acting solenoid valve for use with water and other compatible fluids.

Minimum operational pressure is not required.

The materials used and the tests carried out ensure maximum reliability and duration.

## Features

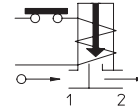
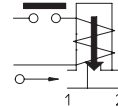
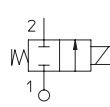
- Use in vending and other potable water applications
- G1/8 or G1/4
- Coil temperature: 180°C (356°F) (class H)
- Recommended ambient temperature range  
-20°C to +60°C (-4°F to +140°F)
- Electrical conformity IEC 335
- Protection degree IP 65 EN 60529 (DIN 40050) with coil fitted by connector.
- NSF/ANSI 169
- Accepts DIN 43650A cables



See our website

for a variety of cable options.

Gaskets	Temperature		Medium
V=FKM (fluoroelastomer)	-10°C (14°F)	+140°C (284°F)	Water, Air, Steam



Solenoid Valve 2/2 Way N.C. Direct Acting													
Part No.	Port Size	Max Viscosity	ø mm	Kv (l/mn)	Cv	Coil Voltage	Power*	Operating Pressure (bar/psi)			Price	Weight (lbs)	Drawing Link
		cSt						Min	Max	Max Operating Pressure Differential			
21A31K1V45-WT3-A	G1/8	53	4.5	6.5	0.45	120VAC (60Hz) 110VAC (50Hz)	15VA	0 / 0	40 / 580	10 / 145.0		0.74	<a href="#">PDF</a>
21A31K1V45-WT3-B						24VDC	11W			5 / 72.5		0.76	<a href="#">PDF</a>
21A22K1V55-WT3-A	G1/4		5.5	9	0.63	120VAC (60Hz) 110VAC (50Hz)	15VA			7 / 101.5		0.71	<a href="#">PDF</a>
21A22K1V55-WT3-B						24VDC	11W			2 / 29.0		0.73	<a href="#">PDF</a>

Materials	
Body	Low lead brass
Armature Tube	Stainless steel AISI series 300
Fixed Core	Stainless steel AISI series 400
Plunger	Stainless steel AISI series 400
Phase Displacement Ring	Gold plated copper
Spring	Stainless steel AISI series 300
Seal	V=FKM (fluoroelastomer)
Orifice	Low lead brass
Electrical Connections	18mm DIN 43650 Form A With connector EN 175301-803 paragraph 5.3.1 Protection degree IP 65 EN 60529 (DIN 40050)

\* NOMINAL VOLTAGE TOLERANCES: AC + 10% - 15%  
DC + 10% - 5%

The power values are indicative, as they change as a function of the magnetic kit used and of the application sector of reference. Other voltages and power absorptions are available.

ODE 10-09-2018

To obtain the most current agency approval information, see the Agency Approval Checklist section on the specific part number's web page.



# Solenoid Valve 2 Way / 2 Position N.C. With Pilot Control



**21WN3K1E130-T5-A  
Valve Shown**

Solenoid valve with pilot control for use with water and other compatible fluids.

A minimum operational pressure of 0.2 bar (2.9 psi) is required.

The materials used and the tests carried out ensure maximum reliability and duration.

## Features

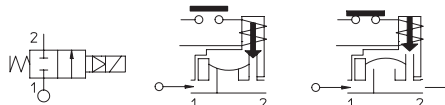
- Use in water and water distribution
- 3/8", 1/2", 3/4" and 1" NPT ports
- Coil temperature: 180°C (356°F) (class H)
- Recommended ambient temperature range -20°C to +60°C (-4°F to +140°F)
- Max. allowable temperature 82°C (179.6°F)
- Electrical conformity IEC 335
- Protection degree IP 65 EN 60529 (DIN 40050) with coil fitted by connector.
- NSF/ANSI/CAN/61
- Accepts DIN 43650A cables



See our website

for a variety of cable options.

Gaskets	Temperature		Medium
E = EPDM (ethylene-propylene)	-10°C (14°F)	+140°C (284°F)	Water



Solenoid Valve 2/2 Way N.C. With Pilot Control													
Part No.	Port Size	Max Viscosity	ø mm	Kv (l/mn)	Cv	Coil Voltage	Power*	Operating Pressure (bar/psi)			Price	Weight (lbs)	Drawing Link
		cSt						Min	Max	Max Operating Pressure Differential			
21WN3K1E130-T5-A	3/8" FNPT	12	13	60	4.1	120VAC (60Hz) 110VAC (50Hz)	15VA	0.2 / 2.90	25 / 363	16 / 232.1		1.36	<a href="#">PDF</a>
21WN3K1E130-T5-B						24VDC	11W					1.38	<a href="#">PDF</a>
21WN4K1E130-T5-A	1/2" FNPT			70	4.8	120VAC (60Hz) 110VAC (50Hz)	15VA					1.35	<a href="#">PDF</a>
21WN4K1E130-T5-B						24VDC	11W					1.37	<a href="#">PDF</a>
21WN5K1E190-T5-A	3/4" FNPT		19	140	9.8	120VAC (60Hz) 110VAC (50Hz)	15VA					2.48	<a href="#">PDF</a>
21WN5K1E190-T5-B						24VDC	11W					2.51	<a href="#">PDF</a>
21WN6K1E250-T5-A	1" FNPT		25	190	14	120VAC (60Hz) 110VAC (50Hz)	15VA					2.76	<a href="#">PDF</a>
21WN6K1E250-T5-B						24VDC	11W					2.78	<a href="#">PDF</a>

Materials	
Body	Low lead brass
Armature Tube	Stainless steel AISI series 300
Fixed Core	Stainless steel AISI series 400
Plunger	Stainless steel AISI series 400
Phase Displacement Ring	Gold plated copper
Spring	Stainless steel AISI series 300
Seal	E = EPDM (ethylene-propylene)
Orifice	Low lead brass
Electrical Connections	18mm DIN 43650 Form A With connector EN 175301-803 paragraph 5.3.1 Protection degree IP 65 EN 60529 (DIN 40050)

\* NOMINAL VOLTAGE TOLERANCES: AC + 10% - 15%  
DC + 10% - 5%

The power values are indicative, as they change as a function of the magnetic kit used and of the application sector of reference. Other voltages and power absorptions are available.

ODE 10-09-2018

To obtain the most current agency approval information, see the Agency Approval Checklist section on the specific part number's web page.



# Solenoid Valve 2 Way / 2 Position N.C. With Pilot Control



**21WN7K1E350-T3-A  
Valve Shown**

Solenoid valve with pilot control for use with water and other compatible fluids.

A minimum operational pressure of 0.2 bar (2.9 psi) is required.

The materials used and the tests carried out ensure maximum reliability and duration.

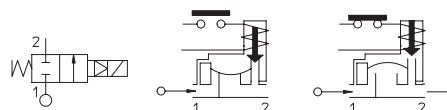
## Features

- Use in water and water distribution
- 1-1/4" and 1-1/2" NPT ports
- Coil temperature: 180°C (356°F) (class H)
- Recommended ambient temperature range -20°C to +60°C (-4°F to +140°F)
- Electrical conformity IEC 335
- Protection degree IP 65 EN 60529 (DIN 40050) with coil fitted by connector.
- NSF/ANSI 169
- Accepts DIN 43650A cables



See our website

for a variety of cable options.



Gaskets	Temperature		Medium
V=FKM (fluoroelastomer)	-10°C (14°F)	+140°C (284°F)	Water, Water distribution

Solenoid Valve 2/2 Way N.C. With Pilot Control													
Part No.	Port Size	Max Viscosity	ø mm	Kv (l/min)	Cv	Coil Voltage	Power*	Operating Pressure (bar/psi)			Price	Weight (lbs)	Drawing Link
		cSt						Min	Max	Max Operating Pressure Differential			
21WN7K1V350-T3-A	1-1/4" FNPT	12	35	400	28	120VAC (60Hz) 110VAC (50Hz)	15VA	0.2 / 2.90	16 / 232.1	10 / 145.0		7.29	<a href="#">PDF</a>
21WN7K1V350-T3-B						24VDC	11W					7.28	<a href="#">PDF</a>
21WN8K1V400-T3-A	1-1/2" FNPT		40	520	36	120VAC (60Hz) 110VAC (50Hz)	15VA					6.57	<a href="#">PDF</a>
21WN8K1V400-T3-B						24VDC	11W					6.57	<a href="#">PDF</a>

Materials	
Body	Low lead brass
Armature Tube	Stainless steel AISI series 300
Fixed Core	Stainless steel AISI series 400
Plunger	Stainless steel AISI series 400
Phase Displacement Ring	Gold plated copper
Spring	Stainless steel AISI series 300
Seal	V=FKM (fluoroelastomer)
Orifice	Low lead brass
Electrical Connections	18mm DIN 43650 Form A With connector EN 175301-803 paragraph 5.3.1 Protection degree IP 65 EN 60529 (DIN 40050)

\* NOMINAL VOLTAGE TOLERANCES: AC + 10% - 15%  
DC + 10% - 5%

The power values are indicative, as they change as a function of the magnetic kit used and of the application sector of reference. Other voltages and power absorptions are available.

ODE 10-09-2018

To obtain the most current agency approval information, see the Agency Approval Checklist section on the specific part number's web page.



# Solenoid Valve 2 Way / 2 Position N.C. With Pilot Control



**21WN5K1E190-10T5-A  
Valve Shown**

Solenoid valve with pilot control for use with water and other compatible fluids.

A minimum operational pressure of 0.2 bar (2.9 psi) is required.

The materials used and the tests carried out ensure maximum reliability and duration.

## Features

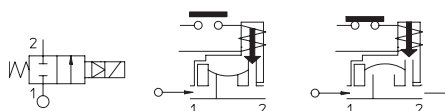
- Slow close operation reduces pressure spikes and water hammer
- Use in automation and heating
- 3/4" NPT ports
- Coil temperature: 180°C (356°F) (class H)
- Recommended ambient temperature range -20°C to +60°C (-4°F to +140°F)
- Electrical conformity IEC 335
- Protection degree IP 65 EN 60529 (DIN 40050) with coil fitted by connector.
- NSF/ANSI/CAN/61
- Accepts DIN 43650A cables



See our website

for a variety of cable options.

Gaskets	Temperature		Medium
E = EPDM (ethylene-propylene)	-10°C (14°F)	+140°C (284°F)	Water



Solenoid Valve 2/2 Way N.C. With Pilot Control													
Part No.	Port Size	Max Viscosity	ø mm	Kv (l/min)	Cv	Coil Voltage	Power*	Operating Pressure (bar/psi)			Price	Weight (lbs)	Drawing Link
		cSt						Min	Max	Max Operating Pressure Differential			
21WN5K1E190-10T5-A	3/4" FNPT	12	19	140	9.8	120VAC (60Hz) 110VAC (50Hz)	15VA	0.2 / 2.90	25/362.6	16 / 232.1		2.52	<a href="#">PDF</a>
21WN5K1E190-10T5-B						24VDC	11W						2.5

Materials	
Body	Low lead brass
Armature Tube	Stainless steel AISI series 300
Fixed Core	Stainless steel AISI series 400
Plunger	Stainless steel AISI series 400
Phase Displacement Ring	Gold plated copper
Spring	Stainless steel AISI series 300
Seal	E = EPDM (ethylene-propylene)
Orifice	Low lead brass
Electrical Connections	18mm DIN 43650 Form A With connector EN 175301-803 paragraph 5.3.1 Protection degree IP 65 EN 60529 (DIN 40050)

\* NOMINAL VOLTAGE TOLERANCES: AC + 10% - 15%  
DC + 10% - 5%

The power values are indicative, as they change as a function of the magnetic kit used and of the application sector of reference. Other voltages and power absorptions are available.

ODE 10-09-2018

To obtain the most current agency approval information, see the Agency Approval Checklist section on the specific part number's web page.





# Solenoid Valve 2 Way / 2 Position N.C. With Pilot Control



**21WN6K1E250-10T5-A  
Valve Shown**

Solenoid valve with pilot control for use with water and other compatible fluids.

A minimum operational pressure of 0.2 bar (2.9 psi) is required.

The materials used and the tests carried out ensure maximum reliability and duration.

## Features

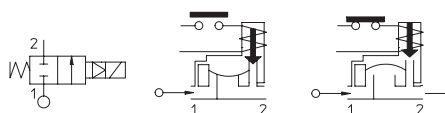
- Slow close operation reduces pressure spikes and water hammer
- Use in water and water distribution
- 1" NPT ports
- Coil temperature: 180°C (356°F) (class H)
- Recommended ambient temperature range -20°C to +60°C (-4°F to +140°F)
- Electrical conformity IEC 335
- Protection degree IP 65 EN 60529 (DIN 40050) with coil fitted by connector.
- 21WN6K1E250-10T5-A has UL
- NSF/ANSI/CAN/61
- Accepts DIN 43650A cables



See our website

for a variety of cable options.

Gaskets	Temperature		Medium
E = EPDM (ethylene-propylene)	-10°C (14°F)	+140°C (284°F)	Water



Solenoid Valve 2/2 Way N.C. With Pilot Control - NSF 61 Certified													
Part No.	Port Size	Max Viscosity	ø mm	Kv (l/mn)	Cv	Coil Voltage	Power*	Operating Pressure (bar/psi)			Price	Weight (lbs)	Drawing Link
		cSt						Min	Max	Max Operating Pressure Differential			
21WN6K1E250-10T5-A	1" FNPT	12	25	190	14	120VAC (60Hz) 110VAC (50Hz)	15VA	0.2 / 2.90	23 / 333.6	16 / 232.1		2.79	<a href="#">PDF</a>
21WN6K1E250-10T5-B						24VDC	11W						2.82

Materials	
Body	Low lead brass
Armature Tube	Stainless steel AISI series 300
Fixed Core	Stainless steel AISI series 400
Plunger	Stainless steel AISI series 400
Phase Displacement Ring	Gold plated copper
Spring	Stainless steel AISI series 300
Seal	E = EPDM (ethylene-propylene)
Orifice	Low lead brass
Electrical Connections	18mm DIN 43650 Form A With connector EN 175301-803 paragraph 5.3.1 Protection degree IP 65 EN 60529 (DIN 40050)

\* NOMINAL VOLTAGE TOLERANCES: AC + 10% - 15%  
DC + 10% - 5%

The power values are indicative, as they change as a function of the magnetic kit used and of the application sector of reference. Other voltages and power absorptions are available.

ODE 10-09-2018

To obtain the most current agency approval information, see the Agency Approval Checklist section on the specific part number's web page.








# ODE - Replacement Coils

ODE replacement solenoid coils are available in five popular voltages and fit all ODE solenoid valves sold by AutomationDirect.com.

## Features

- Used for ODE brass process valves only
- Coil: BDV - Coil housing material: PET - Black polyethylene - 180°C (class H)
- Winding: In class H
- Electrical Connections: With connector EN 175301-803 paragraph 5.3.1  
Protection degree IP 65 EN 60529 (DIN 40050)  
- accepts DIN 43650A cables



ODE Water Valve Accessory Coils										
Coil Photo	Part No.	Voltage Rating	Power Rating	Ambient Temperature	Connection	ED (Duty Cycle)	Approvals	Price	Weight (lbs)	Drawing Link
	<b>BDV08110AY</b>	120VAC (60Hz) 110VAC (50Hz)	15VA	-20°C to +60°C (-4°F to +140°F)	18mm EN 175301-803	100%	UL, CE, CSA & VDE		0.32	<a href="#">PDF</a>
	<b>BDV08230AY</b>	240VAC (60Hz) 230VAC (50Hz)	16VA						0.32	<a href="#">PDF</a>
	<b>BDV08024DY</b>	24VAC (50/60 Hz)	17VA						0.32	<a href="#">PDF</a>
	<b>BDV08012CY</b>	12VDC	11W						0.33	<a href="#">PDF</a>
	<b>BDV08024CY</b>	24VDC							0.33	<a href="#">PDF</a>

\* NOMINAL VOLTAGE TOLERANCES: AC + 10% - 15%  
DC + 10% - 5%

See our website [www.automationdirect.com](#) for complete Engineering drawings.

The power values are indicative, as they change as a function of the magnetic kit used and of the application sector of reference.