

# proSense® Bi-Metal Dial Thermometers



## Features

- General purpose 3” and 5” dial, 304 stainless steel thermometer
- Bi-metallic sensing element for reliable readings
- Back or adjustable angle connection
- Welded stem length from 2.5” to 9”
- Dual scale (°F / °C)
- ±1% accuracy
- Anti-parallax dial that reduces operator reading errors
- Re-zero adjustment screws
- Optional thermowells
- 5 year warranty



## Applications

- Industrial process, hot/chilled water lines, boilers, HVAC, food processing and wastewater, OEM

Click on the thumbnail or go to <https://vid-te-0001> for a short video on Bi-Metal Dial Thermometers



ProSense 3” Dial Bi-Metal Thermometers					
Part Number	Description	Pcs/Pkg	Wt(lb)	Price	Thermowell
<b>T30-N40160-25C</b>	Thermometer, 3 in. dial, 2.5 in. stem, -40 to 160 °F (-40 to 70 °C), center back mount	1	0.50		TW025-01* TW025-03*
<b>T30-0250-25C</b>	Thermometer, 3 in. dial, 2.5 in. stem, 0 to 250 °F (-18 to 120 °C), center back mount	1	0.50		
<b>T30-50500-25C</b>	Thermometer, 3 in. dial, 2.5 in. stem, 50 to 500 °F (10 to 260 °C), center back mount	1	0.50		
<b>T30-150750-25C</b>	Thermometer, 3 in. dial, 2.5 in. stem, 150 to 750 °F (70 to 400 °C), center back mount	1	0.50		
<b>T30-N40160-4C</b>	Thermometer, 3 in. dial, 4 in. stem, -40 to 160 °F (-40 to 70 °C), center back mount	1	0.50		TW04-01* TW04-02* TW04-03* TW04-04*
<b>T30-0250-4C</b>	Thermometer, 3 in. dial, 4 in. stem, 0 to 250 °F (-18 to 120 °C), center back mount	1	0.50		
<b>T30-50500-4C</b>	Thermometer, 3 in. dial, 4 in. stem, 50 to 500 °F (10 to 260 °C), center back mount	1	0.50		
<b>T30-150750-4C</b>	Thermometer, 3 in. dial, 4 in. stem, 150 to 750 °F (70 to 400 °C), center back mount	1	0.50		
<b>T30-N40160-6C</b>	Thermometer, 3 in. dial, 6 in. stem, -40 to 160 °F (-40 to 70 °C), center back mount	1	0.50		TW06-01* TW06-02* TW06-03* TW06-04*
<b>T30-0250-6C</b>	Thermometer, 3 in. dial, 6 in. stem, 0 to 250 °F (18 to 120 °C), center back mount	1	0.50		
<b>T30-50500-6C</b>	Thermometer, 3 in. dial, 6 in. stem, 50 to 500 °F (10 to 260 °C), center back mount	1	0.50		
<b>T30-150750-6C</b>	Thermometer, 3 in. dial, 6 in. stem, 150 to 750 °F (70 to 400 °C), center back mount	1	0.50		

ProSense 5” Dial Bi-Metal Thermometers					
Part Number	Description	Pcs/Pkg	Wt(lb)	Price	Thermowell
<b>T50-N40160-25A</b>	Thermometer, 5 in. dial, 2.5 in. stem, -40 to 160 °F (-40 to 70 °C), adjustable angle mount	1	1.30		TW025-01* TW025-03*
<b>T50-0250-25A</b>	Thermometer, 5 in. dial, 2.5 in. stem, 0 to 250 °F (-18 to 120 °C), adjustable angle mount	1	1.30		
<b>T50-50500-25A</b>	Thermometer, 5 in. dial, 2.5 in. stem, 50 to 500 °F (10 to 260 °C), adjustable angle mount	1	1.30		
<b>T50-150750-25A</b>	Thermometer, 5 in. dial, 2.5 in. stem, 150 to 750 °F (70 to 400 °C), adjustable angle mount	1	1.30		
<b>T50-N40160-4A</b>	Thermometer, 5 in. dial, 4 in. stem, -40 to 160 °F (-40 to 70 °C), adjustable angle mount	1	1.30		TW04-01* TW04-02* TW04-03* TW04-04*
<b>T50-0250-4A</b>	Thermometer, 5 in. dial, 4 in. stem, 0 to 250 °F (-18 to 120 °C), adjustable angle mount	1	1.30		
<b>T50-50500-4A</b>	Thermometer, 5 in. dial, 4 in. stem, 50 to 500 °F (10 to 260 °C), adjustable angle mount	1	1.30		
<b>T50-150750-4A</b>	Thermometer, 5 in. dial, 4 in. stem, 150 to 750 °F (70 to 400 °C), adjustable angle mount	1	1.30		
<b>T50-N40160-6A</b>	Thermometer, 5 in. dial, 6 in. stem, -40 to 160 °F (-40 to 70 °C), adjustable angle mount	1	1.30		TW06-01* TW06-02* TW06-03* TW06-04*
<b>T50-0250-6A</b>	Thermometer, 5 in. dial, 6 in. stem, 0 to 250 °F (-18 to 120 °C), adjustable angle mount	1	1.30		
<b>T50-50500-6A</b>	Thermometer, 5 in. dial, 6 in. stem, 50 to 500 °F (10 to 260 °C), adjustable angle mount	1	1.30		
<b>T50-150750-6A</b>	Thermometer, 5 in. dial, 6 in. stem, 150 to 750 °F (70 to 400 °C), adjustable angle mount	1	1.30		
<b>T50-N40160-9A</b>	Thermometer, 5 in. dial, 9 in. stem, -40 to 160 °F (-40 to 70 °C), adjustable angle mount	1	1.50		TW09-01* TW09-03*
<b>T50-0250-9A</b>	Thermometer, 5 in. dial, 9 in. stem, 0 to 250 °F (-18 to 120 °C), adjustable angle mount	1	1.50		
<b>T50-50500-9A</b>	Thermometer, 5 in. dial, 9 in. stem, 50 to 500 °F (10 to 260 °C), adjustable angle mount	1	1.50		
<b>T50-150750-9A</b>	Thermometer, 5 in. dial, 9 in. stem, 150 to 750 °F (70 to 400 °C), adjustable angle mount	1	1.50		

\* Catalog pages for these thermowells are located on previous pages in this same section, under the “Thermowells for Spring-Loaded Thermocouples and RTD’s, or Thermometers” pages.

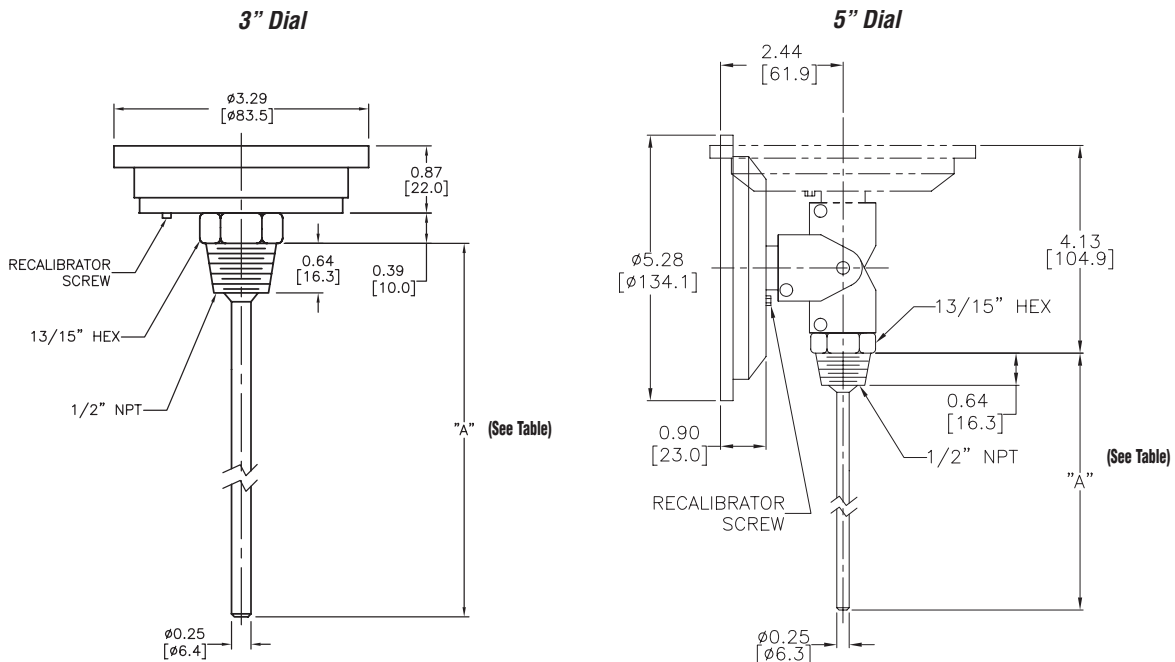
# pro<sup>o</sup>ense<sup>®</sup> Bi-Metal Dial Thermometers

Technical Specifications		
<b>Dial Size</b>	3.0" [76.2 mm]	5.0" [127 mm]
<b>Case</b>	AISI 304 SS	
<b>Stem</b>	AISI 304 SS welded to socket, center back	AISI 304 center back, adjustable angle
<b>Lens</b>	Glass, hermetically sealed	
<b>Ring</b>	AISI 304 SS	
<b>Connection</b>	1/2" NPT	
<b>Sensing Element</b>	Bi-metallic coil	
<b>Pointer</b>	Aluminum, painted black	
<b>Maximum Operating Pressure</b>	125 psi (861 kPa)	
<b>Operating Temperature</b>	75% of full scale value (recommended maximum)	
<b>Ambient Temperatures</b>	-58°F to 248°F (-50°C to 120°C)	
<b>Accuracy</b>	±1%	
<b>Enclosure Rating</b>	IP68	



**NOTE: THE USE OF A THERMOWELL IS RECOMMENDED TO PROTECT THE THERMOMETER IN CORROSIVE OR PRESSURE APPLICATIONS, AS WELL AS TO MAINTAIN A CLOSED SYSTEM DURING ITS REMOVAL FROM THE PROCESS.**

## Dimensions Inches [mm]



Dimension "A" According to Thermometer Model		
Part Number Ending With:	Inches	Millimeters
-25C	2.5"	63.5 mm
-4C	4"	101.6 mm
-6C	6"	152.4 mm
-9C	9"	228.6 mm