

# pro<sup>sense</sup> Thermocouple and RTD Connectors

## Overview

- Glass-filled high quality thermoplastic body with original thermocouple material pins and spring-loaded inserts
- Polarized pins
- Molded barriers prevent short circuit
- Captive central cover screw for easy assembly
- Easy wire connection pressure plate construction
- Stainless steel screws with combination head (Slotted and Phillips)
- 3-pin standard connectors have a third pin for ground or continuous shield, or for 3-wire RTDs



Thermocouple and RTD Connectors									
Part Number	Pcs/ Pkg	Wt(lb)	Price	Sensor Type	Connector Type	Temperature Rating	Body Color	Wire Size	Wire Cable Clamp Bracket
<b>THMJ-SP</b>	1	0.5		J	Standard round pin plug	Max continuous 400°F (200°C)	Black	32 AWG (0.2 mm) to 14 AWG maximum (2.0 mm)	WCB-S
<b>THMJ-SJ</b>	1	0.5	Standard round pin jack		–				
<b>THMJ-SPJ</b>	1	0.5	Standard round direct mount jack		–				
<b>THMJ-MP</b>	1	0.5	Miniature flat pin plug		40 AWG (0.08 mm) to 20 AWG maximum (0.8 mm)			WCB-M	
<b>THMJ-MJ</b>	1	0.5	Miniature flat pin jack					–	
<b>THMJ-MPJ</b>	1	0.5	Miniature round direct mount jack					–	
<b>THMK-SP</b>	1	0.5		K	Standard round pin plug	Max continuous 662°F (350°C)	Yellow	32 AWG (0.2 mm) to 14 AWG maximum (2.0 mm)	WCB-S
<b>THMK-SJ</b>	1	0.5	Standard round pin jack		–				
<b>THMK-SPJ</b>	1	0.5	Standard round direct mount jack		–				
<b>THMK-MP</b>	1	0.5	Miniature flat pin plug		40 AWG (0.08 mm) to 20 AWG maximum (0.8 mm)			WCB-M	
<b>THMK-MJ</b>	1	0.5	Miniature flat pin jack					–	
<b>THMK-MPJ</b>	1	0.5	Miniature round direct mount jack					–	
<b>THMK-HSP</b>	1	0.5		RTD	Standard hi-temp round pin plug	Max continuous 662°F (350°C)	Brown	32 AWG (0.2 mm) to 14 AWG maximum (2.0 mm)	WCB-S
<b>THMK-HSJ</b>	1	0.5	Standard hi-temp round pin jack		–				
<b>THMT-SP</b>	1	0.5		T	Standard round pin plug	Max continuous 400°F (200°C)	Blue	32 AWG (0.2 mm) to 14 AWG maximum (2.0 mm)	WCB-S
<b>THMT-SJ</b>	1	0.5	Standard round pin jack		–				
<b>THMT-SPJ</b>	1	0.5	Standard round direct mount jack		–				
<b>THMT-MP</b>	1	0.5	Miniature flat pin plug		40 AWG (0.08 mm) to 20 AWG maximum (0.8 mm)			WCB-M	
<b>THMT-MJ</b>	1	0.5	Miniature flat pin jack					–	
<b>THMT-MPJ</b>	1	0.5	Miniature round direct mount jack					–	
<b>RTD-SP</b>	1	0.5		RTD	Standard round pin plug	Max continuous 400°F (200°C)	White	32 AWG (0.2 mm) to 14 AWG maximum (2.0 mm)	WCB-S
<b>RTD-SJ</b>	1	0.5	Standard round pin jack		–				

**THMT-SP**



**THMT-SJ**



**THMK-SP**



**THMK-SJ**



**THMJ-MP**



**THMJ-MJ**



**THMT-SPJ**



**THMT-MPJ**



**RTD-SP**



**RTD-SJ**



**THMK-HSP**



**THMK-HSJ**

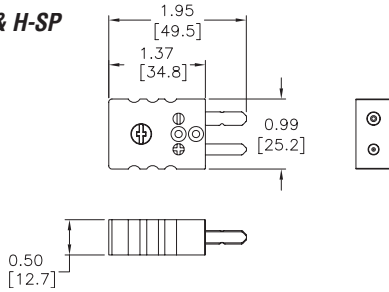


# pro<sup>sense</sup> Thermocouple and RTD Connectors

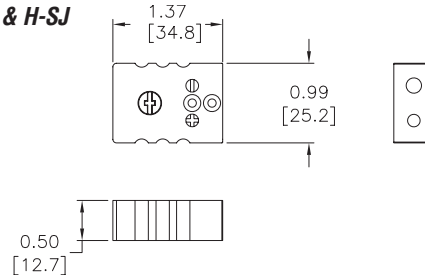
## Dimensions

inches [mm]

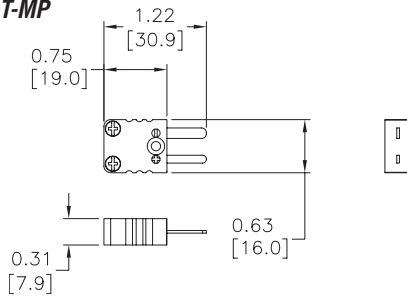
**THMJ, K, T, & H-SP**



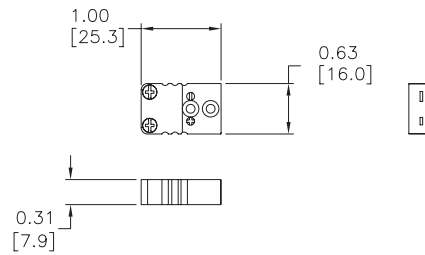
**THMJ, K, T, & H-SJ**



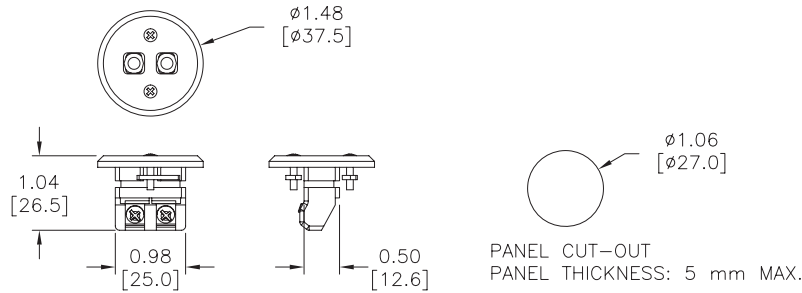
**THMJ, K, & T-MP**



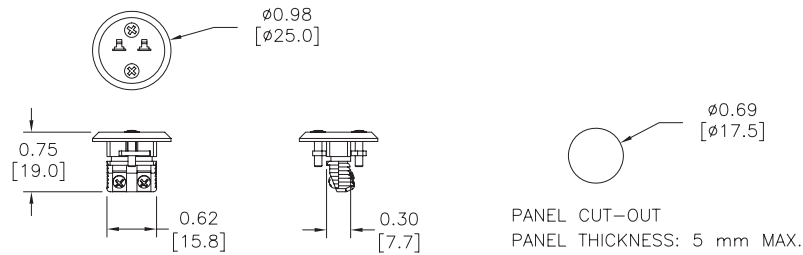
**THMJ, K, & T-MJ**



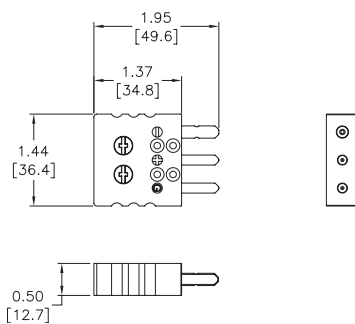
**THMJ, K, & T-SPJ**



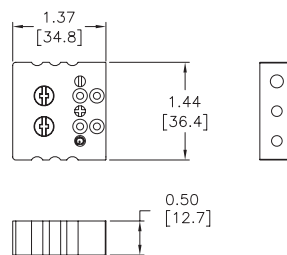
**THMJ, K, & T-MPJ**



**RTD-SP**



**RTD-SJ**



# pro<sup>sense</sup> Thermocouple and RTD Connectors

**WCB-S**



**WCB-M**



**WCB-S Application**



**WCB-M Application**

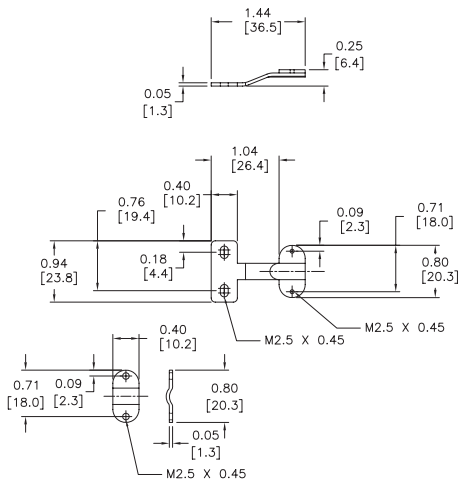


Thermocouple and RTD Connectors Accessories				
Part Number	Pcs/ Pkg	Wt(lb)	Price	Description
<b>WCB-S</b>	4	0.5		Wire / cable clamp bracket for use with standard thermocouple and RTD connectors.
<b>WCB-M</b>	4	0.5		Wire / cable clamp bracket for use with miniature thermocouple connectors.

## Dimensions

inches [mm]

**WCB-S**



**WCB-M**

