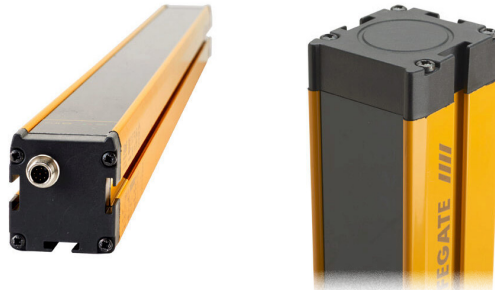


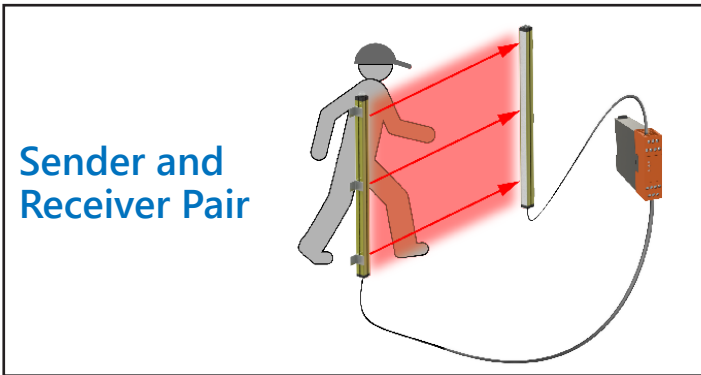
# ReeR Safegate Light Curtains – Body Detection

ReeR non-muting Safegate light curtains are a great choice for applications where a simple light curtain is needed. These light curtains feature built-in, selectable manual/automatic start/restart with an LED status display on the face of each device. Passive retro-reflective elements are also available. All mounting hardware is included to simplify installation.

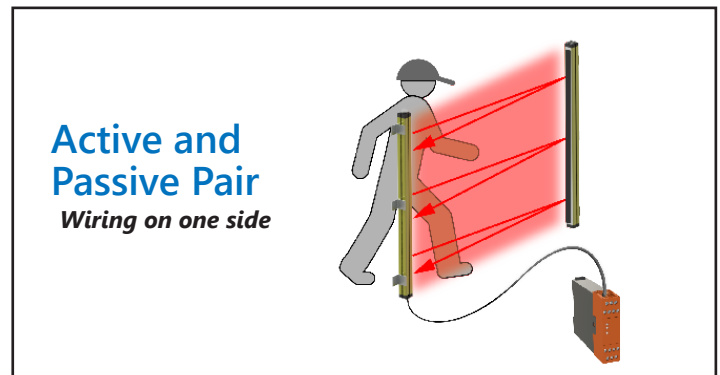
## Non-Muting Light Curtain



S-3B, S-4B, S-3B-TRX, S-4B-TRX



S-3B, S-4B



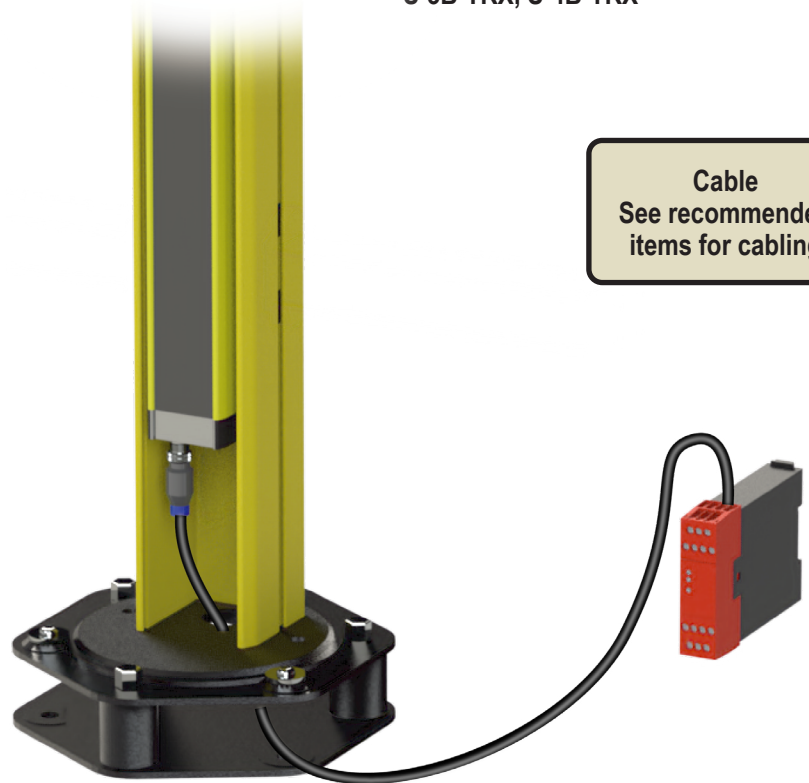
S-3B-TRX, S-4B-TRX

**Light Curtains:**  
S-3B  
S-4B  
S-3B-TRX  
S-4B-TRX

**Protective Columns (optional)**  
FMC-SGB3 (for S-3B or S-3B-TRX)  
FMC-SGB4 (for S-4B or S-4B-TRX)

**Protective Column Base:**  
*(Required with Protective Column)*  
FMC-CB (shown)  
or  
FMC-CBL (not shown)

**Cable**  
See recommended items for cabling



# ReeR Safegate Light Curtains – Body Detection

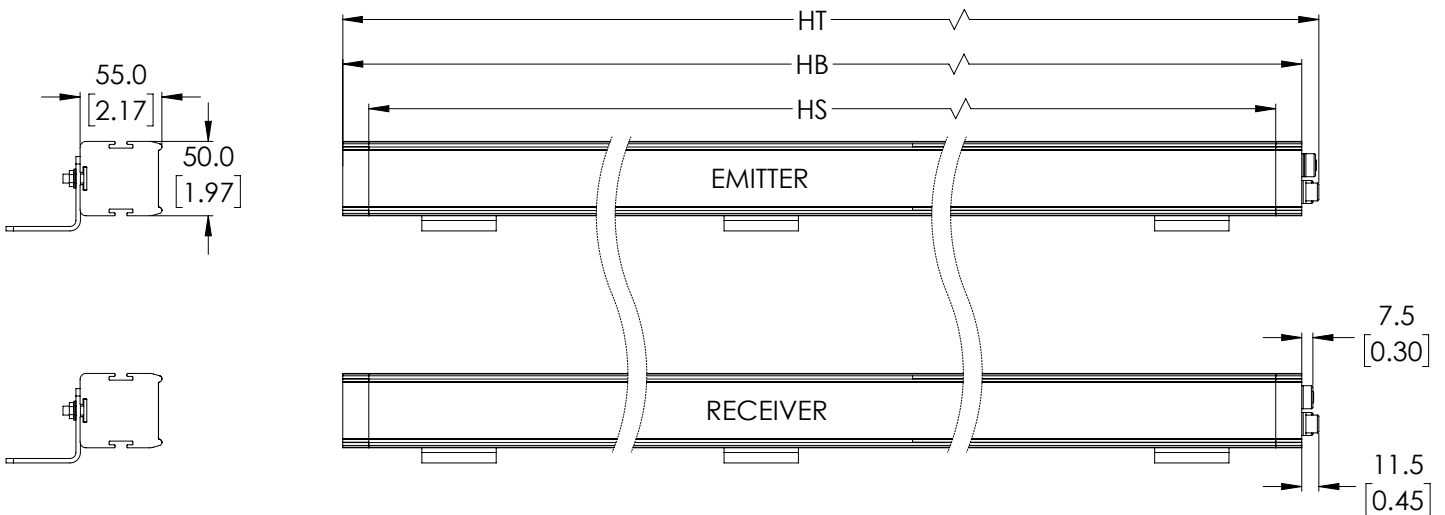


## Features

- LED status display on face of device
- Built-in, selectable manual/automatic Start/Restart
- Dual safety PNP static outputs, auto-controlled
- M12 quick-disconnect (order cable separately)
- Type 4 and Category 4 PLc
- Instruction manual and mounting hardware included
- Passive retro-reflective elements available (TRX)

ReeR Safegate Light Curtains – Body Detection Without Muting Functions – Selection Chart												
Part Number	Price	Protective Height HS mm [in]	Housing Height HB mm [in]	Total Height HT mm [in]	Number of Beams	PFHd	Response Time [ms]	MTTF <sub>d</sub> [years]	DC <sub>avg</sub>	Weight kg [lb]	Resolution mm [in]	Dimensional Drawing
<b>Sender and Receiver Pair</b>												
<b>S-3B</b>		810 [31.89]	974 [38.33]	984 [38.74]	3	9.63E-09	5.5	262.4	98.5%	4.16 [9.15]	400 [15.75]	PDF
<b>S-4B</b>		910 [35.83]	1074 [42.26]	1084 [42.68]	4	1.03E-08	5.5	253.3	98.4%	4.60 [10.15]	300 [11.81]	PDF
<b>Active and Passive Pair</b>												
<b>S-3B-TRX</b>		810 [31.89]	935 [36.79]	945 [37.20]	3	7.58E-09	5.5	401.0	98.2%	4.22 [9.30]	400 [15.75]	PDF
<b>S-4B-TRX</b>		910 [35.83]	1035 [40.73]	1045 [41.14]	4	7.68E-09	5.5	399.4	99.2%	4.62 [10.20]	300 [11.81]	PDF

## Dimensions (see table above)

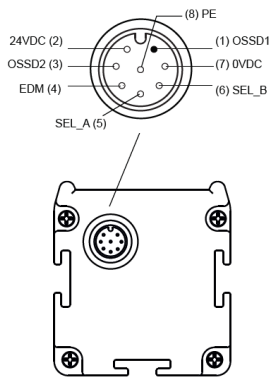


# ReeR Safegate Light Curtains – Body Detection

ReeR Safegate Light Curtains – Body Detection Without Muting Functions Specifications for S-3B-TRX and S-4B-TRX		
Supply Voltage	24VDC ±20%	
Safety Outputs (OSSDs)	2 PNP – 400mA @ 24VDC	
Operating Temperature	-30°C to 55°C [-22°F to 131°F]	
Safety Category	Type 4	EN 61496-1:2013 IEC 61496-2:2013
	SIL3	IEC 61508-1: (ed.2) IEC 61508-2: (ed.2) IEC 61508-3: (ed.2) IEC 61508-4: (ed.2)
	PLe	EN ISO 13849-1:2015
	CAT4	EN ISO 13849-1:2015
CCF	80%	
Degree of Protection	IP65 and IP67	
Working Range	0-8 m [0-26.25 ft]	
Power Consumption	3W	
Connections	Power on Active: M12 8-pin male	
EDM Input	Available on Active, selectable	
Restart Auto/Manual	Available on Active, selectable	
Test Input	Not available	
Conductor requirements	20AWG if length is less than 50m [164.04 ft] 17AWG if length is between 50m [164.04 ft] and 100m [328.1 ft]	
Max Connection Length	100m [328.1 ft]	

## Pin outs for S-3B-TRX and S-4B-TRX

### Active Element



M12 8-PIN MALE CONNECTOR						
Pin	Reer Cable	292 Cable	295 Cable	Signal	In/Out	Description
1	White	White	Brown	OSSD1	Output	Static Safety Outputs
2	Brown	Brown	White	24VDC	–	Power Supply 24VDC
3	Green	Green	Blue	OSSD2	Output	Static Safety Outputs
4	Yellow	Yellow	Black	EDM	Input	K1/K2 Feedback
5	Gray	Gray	Gray	SEL_A	Input	Operating Mode Configuration
6	Pink	Pink	Pink	SEL_B	Input	Operating Mode Configuration
7	Blue	Blue	Violet	0VDC	–	Power Supply 0VDC
8	Red	Red	Orange	PE	–	Ground Connection

AutomationDirect sells M12 8-pole cables with two different color patterns (7000-170x1-292xxxx and 7000-170x1-295xxxx). We recommend the “292” series on our website, which matches the ReeR cable’s color code. However, to help avoid confusion, please refer to the table above comparing the color codes.

OPERATING MODE CONFIGURATION			
Function	Pin 4	Pin 5	Pin 6
Auto no EDM	0VDC	OSSD1 (1)	OSSD2 (3)
Auto with EDM	EDM signal	OSSD2 (3)	OSSD1 (1)
Manual no EDM	0VDC	24VDC	Reset PB
Manual with EDM	EDM signal	Reset PB	24VDC

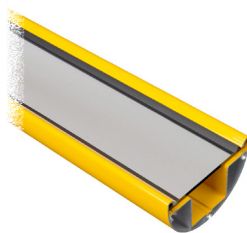
# ReeR Safegate Light Curtain Accessories

Safegate Light Curtains Accessories Overview				
Part Number	Price	Description	Use With	Dimensional Drawing
<b>Protective Columns*</b>				
<a href="#"><u>FMC-SGB3</u></a>		ReeR protective column, 1200mm housing.	SMO-3B SMPO-3B SMO-3B-TRX SMPO-3B-TRX S-3B S-3B-TRX	<a href="#">PDF</a>
<a href="#"><u>FMC-SGB4</u></a>		ReeR protective column, 1330mm housing.	SMO-4B SMPO-4B SMO-4B-TRX SMPO-4B-TRX S-4B S-4B-TRX	<a href="#">PDF</a>
<b>Mirror Columns*</b>				
<a href="#"><u>FMC-S3</u></a>		ReeR single mirror column, 1200mm housing, 1198mm mirror(s).	SMO-3B SMPO-3B SMO-3B-TRX SMPO-3B-TRX S-3B S-3B-TRX	<a href="#">PDF</a>
<a href="#"><u>FMC-S4</u></a>		ReeR single mirror column, 1330mm housing, 1328mm mirror(s).	SMO-4B SMPO-4B SMO-4B-TRX SMPO-4B-TRX S-4B S-4B-TRX	<a href="#">PDF</a>
<a href="#"><u>FMC-SB3</u></a>		ReeR three mirror column, 1200mm housing, (3) 150mm mirror(s).	SMO-3B SMPO-3B SMO-3B-TRX SMPO-3B-TRX S-3B S-3B-TRX	<a href="#">PDF</a>
<a href="#"><u>FMC-SB4</u></a>		ReeR four mirror column, 1330mm housing, (4) 150mm mirror(s).	SMO-4B SMPO-4B SMO-4B-TRX SMPO-4B-TRX S-4B S-4B-TRX	<a href="#">PDF</a>
<b>Column Base</b>				
<a href="#"><u>FMC-CB</u></a>		ReeR column base, 202 x 224 x 55 mm housing. Mounting hardware included.	FMC-Sx	<a href="#">PDF</a>
<a href="#"><u>FMC-CBL</u></a>		ReeR column base, 202 x 224 x 37 mm housing. Mounting hardware included.	FMC-Sx	<a href="#">PDF</a>

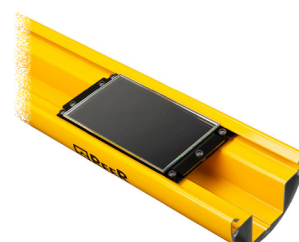
\* Column base must be purchased separately



[FMC-SGB3](#) / [FMC-SGB4](#)



[FMC-S3](#) / [FMC-S4](#)



[FMC-SB3](#) / [FMC-SB4](#)



[FMC-CB](#)



[FMC-CBL](#)

# Safety Products



*Warning: Safety products sold by AutomationDirect are Safety components only. The purchaser/installer is solely responsible for the application of these components and ensuring all necessary steps have been taken to assure each application and use meets all performance and applicable safety requirements and/or local, national and/or international safety codes as required by the application. AutomationDirect cannot certify that our products, used solely or in conjunction with other AutomationDirect or other vendors' products, will assure safety for any application. Any person using or applying any products sold by AutomationDirect is responsible for learning the safety requirements for their individual application and applying them, and therefore assumes all risks, and accepts full and complete responsibility, for the selection and suitability of the product for their respective application.*

*AutomationDirect does not provide design or consulting services, and cannot advise whether any specific application or use of our products would ensure compliance with the safety requirements for any application.*