

# SIRCOVER UL 1008

## Manual Transfer Switching Equipment

The solution for manufacturing, power distribution and domestic applications

### Functions

The Socomec SIRCOVER family of switches are manual transfer switches rated UL 1008. These switches are extremely durable and are tested and approved for use in the most demanding applications, such as resistive load or total system applications.

### Applications

- Normal power supply to generator transfer
- Bypass operations
- Changing motor phase for rotation control or equipment grounding

### Advantages

#### **Stable positions**

SIRCOVERs have three stable, completely isolated positions that are not affected by voltage drops or mechanical vibrations. This safety feature eliminates the risk of short-circuiting between two unsynchronized power supplies, even during transient events.

#### **Compact design**

The SIRCOVER is based on back-to-back switching technology, providing a compact solution.

#### **Reliability**

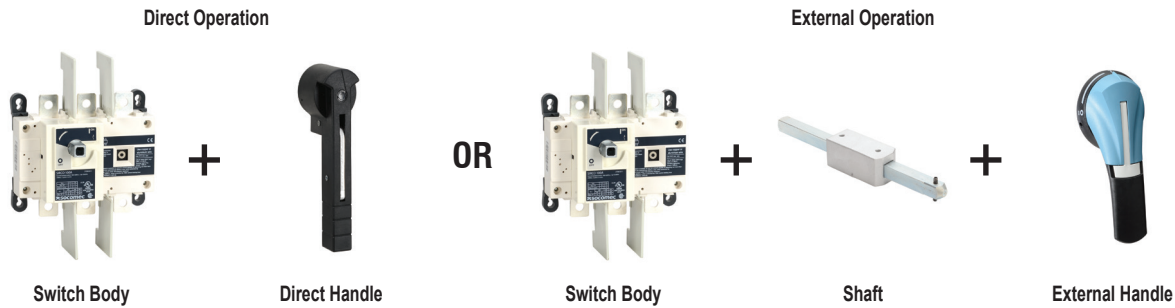
The SIRCOVER has double breaking per pole achieved through its sliding bar contacts system.

The quick opening and rapid closure provides simultaneous disconnecting or making of all power contacts.

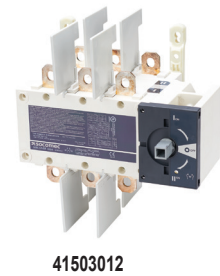


# Sircover M UL 1008 Manual Transfer Switching Equipment

To assemble a switch, please select:



UL 1008 Manual Transfer Switching Equipment				
Part Number	Poles	Amp Rating	Max Operation Voltage (AC)	Price
<a href="#">41502012</a>	2	100	240VAC	
<a href="#">41503012</a>	3		600VAC	
<a href="#">41504012</a>	4			
<a href="#">41502026</a>	2	260	240VAC	
<a href="#">41503026</a>	3		600VAC	
<a href="#">41504026</a>	4			
<a href="#">41503042</a>	3	400	600VAC	
<a href="#">41504042</a>	4			0.00



Note: Not to be used as motor disconnect. MTS meets the requirements of NEC section 702.2.

Direct Handle						
Part Number	Description	Switch Body Rating (A)	Handle Color	Handle Type	NEMA / UL Type	Price
<a href="#">41994012</a>	B type handle for direct operation. Lockable in positions I and II.	100 - 400	Black	B3	-	



41994012

External Handles								
Part Number	Switch Body Rating (A)	Handle Color	Handle Type	NEMA / UL Type	Lockable in 3 positions	Price		
<a href="#">142D2113</a>	100 - 200	Black / Blue	S2	4, 4X	No			
<a href="#">142E2113</a>		Red / Yellow						
<a href="#">142F2113</a>		Black / Blue				1, 3R, 12	Yes	
<a href="#">142G2113</a>		Red / Yellow						
<a href="#">142D2813</a>		Black / Blue		4, 4X	Yes			
<a href="#">142E2813</a>		Red / Yellow						
<a href="#">142F2813</a>		Black / Blue				1, 3R, 12	No	
<a href="#">142G2813</a>		Red / Yellow						
<a href="#">143D3113</a>	260 - 600	Black / Blue	S3	4, 4X	No			
<a href="#">143E3113</a>		Red / Yellow						
<a href="#">143F3113</a>		Black / Blue				1, 3R, 12	Yes	
<a href="#">143G3113</a>		Red / Yellow						
<a href="#">143D3813</a>		Black / Blue		4, 4X	Yes			
<a href="#">143E3813</a>		Red / Yellow						
<a href="#">143F3813</a>		Black / Blue				1, 3R, 12	No	
<a href="#">143G3813</a>		Red / Yellow						



142D2113

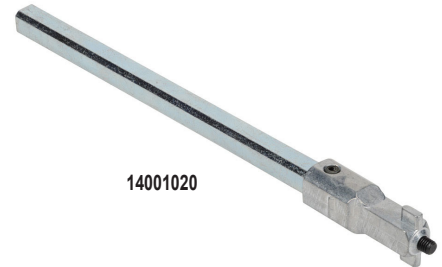


143D3113

# Sircover UL 1008 Manual Transfer Switching Equipment

**Shaft for External Handle**

Shafts for External Handles				
Part Number	Switch Body Rating (A)	Handle Type	Length (in / mm)	Price
<a href="#">14001020</a>	30-400	S1, S2	7.9 / 200	
<a href="#">14001032</a>			12.6 / 320	
<a href="#">14001040</a>			15.7 / 400	
<a href="#">14011520</a>	600	S3	7.9 / 200	
<a href="#">14011532</a>			12.6 / 320	
<a href="#">14011540</a>			15.7 / 400	



**Bridging Bars**

Bridging Bars				
Part Number	Description	Switch Body Rating (A)	QTY	Price
<a href="#">41592021</a>	Allows creation of a common point, above or below the switch, between positions I and II for line or load side connections.	100 - 200	2 bridging bars	
<a href="#">41593021</a>			3 bridging bars	
<a href="#">41594021</a>			4 bridging bars	
<a href="#">41592041</a>		260 - 400	2 bridging bars	
<a href="#">41593041</a>			3 bridging bars	
<a href="#">41594041</a>			4 bridging bars	



**Auxiliary contacts**

Auxiliary Contacts				
Part Number	Description	Switch Body Rating (A)	Contacts	Price
<a href="#">41590021</a>	Auxiliary contact, side mount, 10A @ 125VAC/250VAC. Package of 2.	100 - 400	NO/NC on position I and II	
<a href="#">41590022</a>	Auxiliary contact, side mount, 1A @ 125VAC, low impedance. Package of 2.	100 - 400	Low level NO/NC on position I and II	



**Terminal Protection Screens**

Terminal Protection Screens				
Part Number	Description	Switch Body Rating (A)	Number of poles	Price
<a href="#">41583021*</a>	Use for top or bottom protection against direct contact with terminals or connecting parts.	100 - 200	2/3 P	
<a href="#">41584021*</a>		100 - 200	4 P	
<a href="#">41583041</a>		260 - 400	2/3 P	
<a href="#">41584041</a>		260 - 400	4 P	



\* Note: Screen covers line AND load terminals

Terminal Lugs							
Part Number	Description	Switch Body Rating (A)	Wires	Wires range	Lugs per kit	Wires per lug	Price
<a href="#">39542020</a>	Kit of terminal lugs for connection of bare copper cables onto the terminals (without lugs).	200	Cu/Al	#6 - 300MCM	2	1	
<a href="#">39542040</a>		260-400		#4 - 600MCM	2		
<a href="#">39543020</a>		200		#6 - 300MCM	3		
<a href="#">39543040</a>		400		#2 - 600MCM	3		
<a href="#">39544020</a>		200		#6 - 300MCM	4		
<a href="#">39544040</a>		260-400		#4 - 600MCM	4		



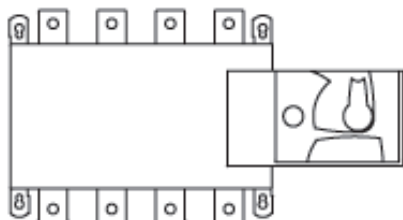
# Sircover M UL 1008 Manual Transfer Switching Equipment

## Technical Characteristics

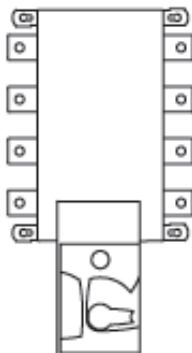
Characteristics According to UL 1008			
	41502012 41503012 41504012	41502026 41503026 41504026	41503042 41504042
<b>General Use Rating</b>	<b>100A</b>	<b>260A</b>	<b>400A</b>
<b>Operation Voltage 2 P / 3-4 P</b>	240 / 600	240 / 600	240 / 600
<b>Short-Circuit Rating With Any Breaker (kA) / Short-Circuit Capacity (ms)</b>	10 / 25	14 / 50	14 / 50
<b>Short-Circuit Rating at 600 VAC (kA)</b>	100	65	65
<b>Type of Fuse</b>	J	J	J
<b>Max. Fuse Rating (A)</b>	200	600	600
<b>Short-Circuit Rating With Specific Breaker (kA)</b>			
<b>Square D JJ reaker 250 A 2 Poles 240 VAC / 3-4 Poles 480 VAC</b>	65	-	-
<b>Schneider Electric NSX-F 160 A 3-4 Poles 480 VAC</b>	35	-	-
<b>Operational Power / Current Max Operational 1 ph</b>			
<b>240 VAC Total System (A)</b>	100	260	400
<b>240 VAC Resistive Load (A)</b>	100	260	400
<b>Operational Power / Current Max Operational 3 ph</b>			
<b>240 VAC Total System (A)</b>	100	260	400
<b>240 VAC Resistive Load (A)</b>	100	260	400
<b>480 VAC Total System (A)</b>	100	260	400
<b>480 VAC Resistive Load (A)</b>	100	260	400
<b>600 VAC Total System (A)</b>	100	200	200
<b>600 VAC Resistive Load (A)</b>	100	260	400
<b>Mechanical Endurance</b>			
<b>Endurance (Number of Operating Cycles)</b>	6050	6050	4050
<b>Operating Torque (lb·in [N·m])</b>	88.5 [10]	88.5 [10]	128.3 [14.5]
<b>Connection Terminals</b>			
<b>Min. Connection Section / AWG</b>	#6	#4 / 2x1 / 0	#4 / 2x1 / 0
<b>Max. Connection Section / AWG</b>	300MCM	600MCM / 2 x 250MCM	600MCM / 2 x 250MCM
<b>Agency Approvals</b>			
UL file # E173959, CSA file # 112964, CE 2011/65/EU, 2014/35/EU LVD, and 2014/30/EU EMC			

## Mounting orientation (100 to 400 A)

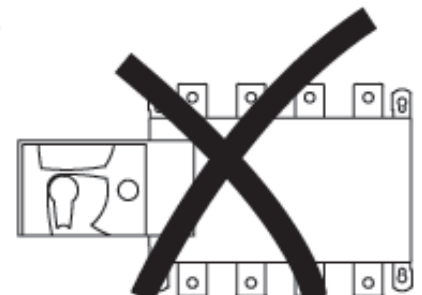
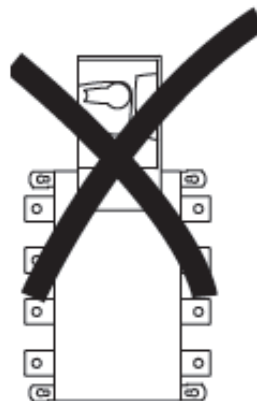
Ensure that the product is installed on a flat rigid surface



Recommended  
orientation



OK



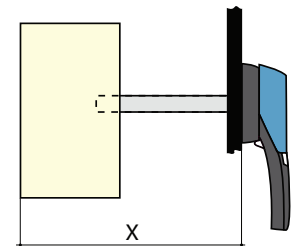
# Sircover M UL 1008 Manual Transfer Switching Equipment

## Dimensions

Inches [mm]

External Handles for UL 1008 Manual Transfer Switches		
S2 Handle		
<p>Handle Dimensions</p>	<p>Direction of Operation</p>	<p>Door Drilling</p>
S3 Handle		
<p>Handle Dimensions</p>	<p>Direction of Operation</p>	<p>Door Drilling</p>

Shaft Length Minimum Dimensions						
Switch Body Rating (A)	Dimension X		Handle Type	Length		Part Number
	in	mm		in	mm	
100 - 200	10-14.3	254-362	S2	7.9	200	14001020
	10-19	254-482		12.6	320	14001032
	10-22.1	254-562		15.7	400	14001040
260-400	20-23.4	508-594	S3	7.9	200	14011520
	20-28.1	508-714		12.6	320	14011532
	20-31.3	508-794		15.7	400	14011540



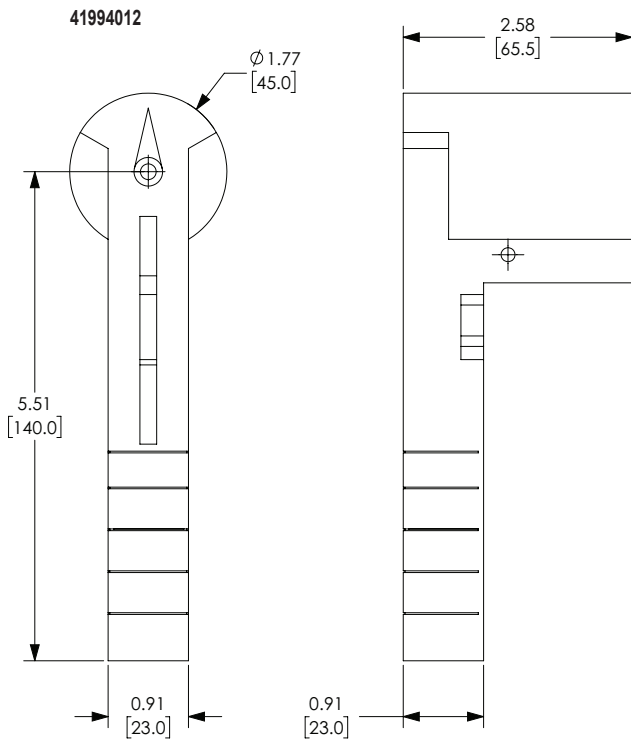
Please see our website for complete engineering drawings.

# Sircover M UL 1008 Manual Transfer Switching Equipment

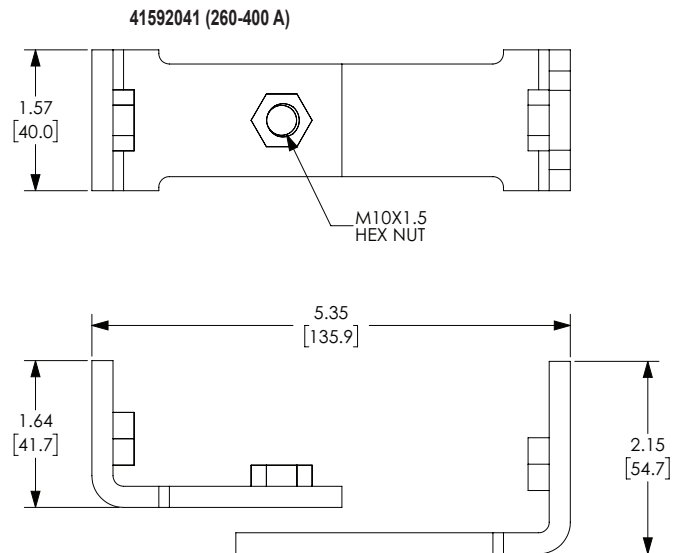
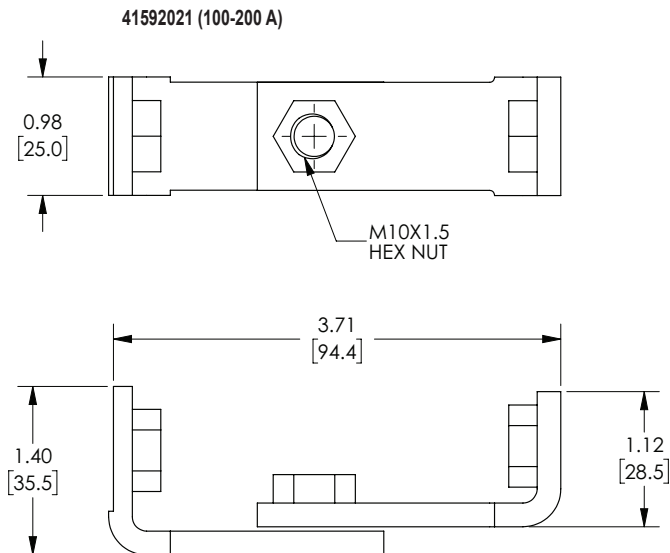
## Dimensions

Inches [mm]

## Direct Handle

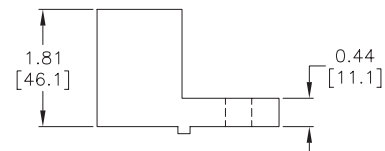
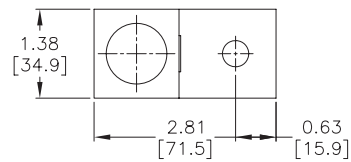
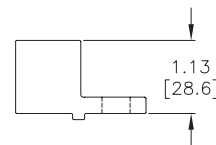
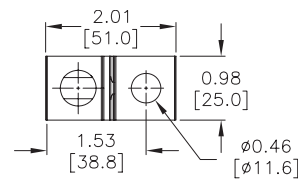
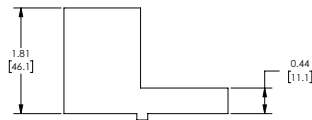
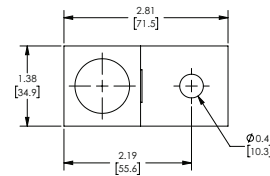


## Bridging Bars



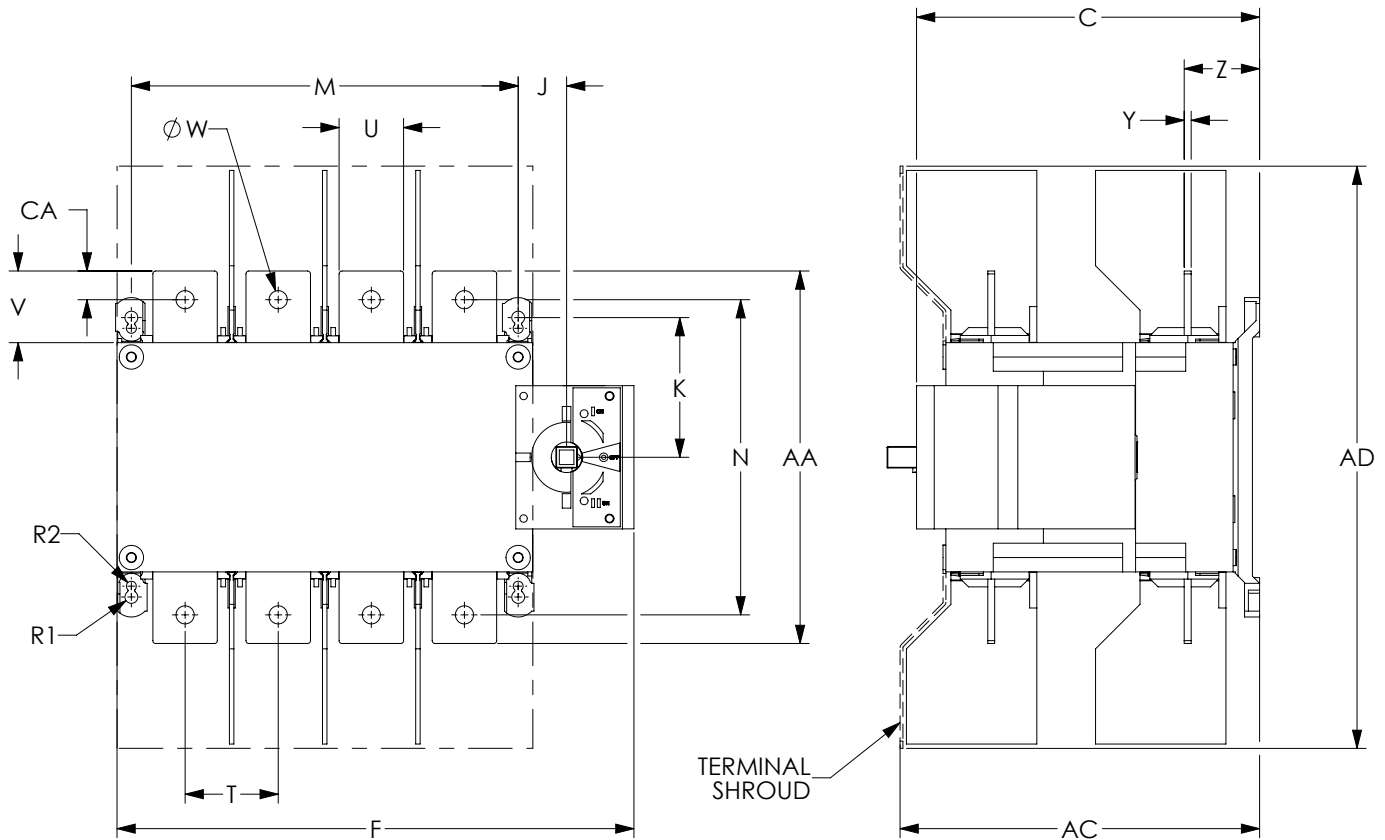
Please see our website for complete engineering drawings.

## Terminal Lugs



# Sircover M UL 1008 Manual Transfer Switching Equipment

Dimensions (see table at bottom of page)



Dimensions Inches [mm]																							
Part Number	Body Rating	C	AC	AD	F 2p	F 3p	F 4p	J	K	M 2p	M 3p	M 4p	N	R1	R2	T	U	V	W	Y	Z	AA	CA
41502012	100A	6.42	6.93	10.43	9.61	9.61	11.57	1.38	3.84	6.30	6.30	8.27	7.68	0.18	0.14	1.97	0.98	1.18	0.43	0.14	1.55	6.30	0.56
41503012		[163]	[176]	[265]	[244]	[244]	[294]	[35]	[98]	[160]	[160]	[210]	[195]	[5]	[4]	[50]	[25]	[30]	[11]	[4]	[39]	[160]	[14]
41504012																							
41502026	260A	9.43	6.52	15.98	11.84	11.84	14.19	1.33	3.84	8.27	8.27	10.63	7.68	0.18	0.14	2.56	1.77	1.97	0.50	0.19	2.07	10.24	0.79
41503026		[240]	[166]	[406]	[301]	[301]	[360]	[34]	[98]	[210]	[210]	[270]	[195]	[5]	[4]	[65]	[45]	[50]	[13]	[5]	[53]	[260]	[20]
41504026																							
41503042	400A	9.43	6.52	15.98	-	11.84	14.19	1.33	3.84	-	8.27	10.63	7.68	0.18	0.14	2.56	1.77	1.97	0.50	0.19	2.07	10.24	0.79
41504042		[240]	[166]	[406]		[301]	[360]	[34]	[98]		[210]	[270]	[195]	[5]	[4]	[65]	[45]	[50]	[13]	[5]	[53]	[260]	[20]

Please see our website for complete engineering drawings.