

Round-Shaft Slide Elements

Description

Round-shaft sliding elements can be combined with other elements to build a huge variety of machine mechanisms. Available in both end- and continuously-supported shafts.

Features

- Linear ball bearings
- High quality clear anodized aluminum blocks
- AISI 1566 Carbon Steel, 60 RC Round Shafts



LARSACC-001/007



LARSB1-12L12C

Slide Rail Systems Load Ratings

Part Number	Normal (lb)		Transverse (lb)
	Down	Up	
Pillow Blocks / Bushings for LARSA1			
LARSACC-001/007	230		
LARSACC-002/008	470		
LARSACC-003/009	850		
LARSA1 Linear Slide Assemblies			
LARSA1-08LxxC	460		
LARSA1-12LxxC	940		
LARSA1-16LxxC	1700		
Pillow Blocks / Bushings for LARSB1			
LARSACC-004/010	230	161	230
LARSACC-005/011	470	268	470
LARSACC-006/012	850	485	850
LARSB1 Linear Slide Assemblies			
LARSB1-08LxxC	460	322	460
LARSB1-12LxxC	940	536	940
LARSB1-16LxxC	1700	970	1700

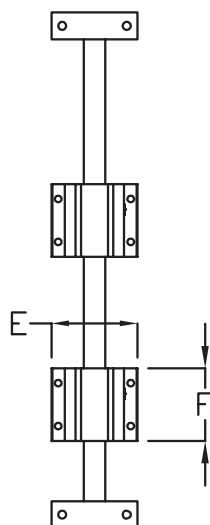
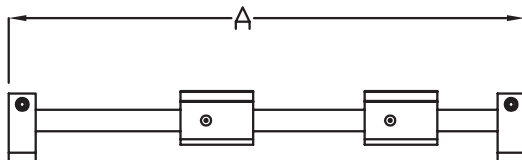
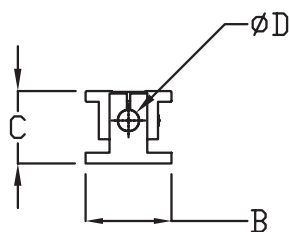
End-Supported Slide Rail Systems and Accessories

Part Number	Price	Description	Weight (lb)
LARSA1-08L12C		SureMotion, linear slide assembly, end supported, round shaft, 1/2 in Ø, 12 inch length, carbon steel. (2) single pillow blocks included.	1.5
LARSA1-08L24C		SureMotion, linear slide assembly, end supported, round shaft, 1/2 in Ø, 24 inch length, carbon steel. (2) single pillow blocks included.	2.0
LARSA1-08L36C		SureMotion, linear slide assembly, end supported, round shaft, 1/2 in Ø, 36 inch length, carbon steel. (2) single pillow blocks included.	2.7
LARSA1-12L12C		SureMotion, linear slide assembly, end supported, round shaft, 3/4 in Ø, 12 inch length, carbon steel. (2) single pillow blocks included.	3.0
LARSA1-12L24C		SureMotion, linear slide assembly, end supported, round shaft, 3/4 in Ø, 24 inch length, carbon steel. (2) single pillow blocks included.	4.5
LARSA1-12L36C		SureMotion, linear slide assembly, end supported, round shaft, 3/4 in Ø, 36 inch length, carbon steel. (2) single pillow blocks included.	6.0
LARSA1-16L12C		SureMotion, linear slide assembly, end supported, round shaft, 1 in Ø, 12 inch length, carbon steel. (2) single pillow blocks included.	6.0
LARSA1-16L24C		SureMotion, linear slide assembly, end supported, round shaft, 1 in Ø, 24 inch length, carbon steel. (2) single pillow blocks included.	8.5
LARSA1-16L36C		SureMotion, linear slide assembly, end supported, round shaft, 1 in Ø, 36 inch length, carbon steel. (2) single pillow blocks included.	11.0
LARSACC-001*		SureMotion single pillow block, closed type, linear ball bushing, 1/2 in inside Ø.	0.3
LARSACC-002*		SureMotion single pillow block, closed type, linear ball bushing, 3/4 in inside Ø.	0.6
LARSACC-003*		SureMotion single pillow block, closed type, linear ball bushing, 1 in inside Ø.	1.2
LARSACC-007*		SureMotion linear ball bushing, closed type, 1/2 in inside Ø, with seals, self-aligning.	0.1
LARSACC-008*		SureMotion linear ball bushing, closed type, 3/4 in inside Ø, with seals, self-aligning.	0.2
LARSACC-009*		SureMotion linear ball bushing, closed type, 1 in inside Ø, with seals, self-aligning.	0.3
Continuously-Supported Slide Rail Systems and Accessories			
LARSB1-08L12C		SureMotion, linear slide assembly, continuously supported, round shaft, 1/2 in Ø, 12 in length, carbon steel. (2) single pillow blocks included.	2.0
LARSB1-08L24C		SureMotion, linear slide assembly, continuously supported, round shaft, 1/2 in Ø, 24 in length, carbon steel. (2) single pillow blocks included.	3.0
LARSB1-08L36C		SureMotion, linear slide assembly, continuously supported, round shaft, 1/2 in Ø, 36 in length, carbon steel. (2) single pillow blocks included.	4.5
LARSB1-12L12C		SureMotion, linear slide assembly, continuously supported, round shaft, 3/4 in Ø, 12 in length, carbon steel. (2) single pillow blocks included.	4.0
LARSB1-12L24C		SureMotion, linear slide assembly, continuously supported, round shaft, 3/4 in Ø, 24 in length, carbon steel. (2) single pillow blocks included.	6.2
LARSB1-12L36C		SureMotion, linear slide assembly, continuously supported, round shaft, 3/4 in Ø, 36 in length, carbon steel. (2) single pillow blocks included.	9.0
LARSB1-16L12C		SureMotion, linear slide assembly, continuously supported, round shaft, 1 in Ø, 12 in length, carbon steel. (2) single pillow blocks included.	6.5
LARSB1-16L24C		SureMotion, linear slide assembly, continuously supported, round shaft, 1 in Ø, 24 in length, carbon steel. (2) single pillow blocks included.	10.5
LARSB1-16L36C		SureMotion, linear slide assembly, continuously supported, round shaft, 1 in Ø, 36 in length, carbon steel. (2) single pillow blocks included.	14.5
LARSACC-004*		SureMotion single pillow block, open type, linear ball bushing, 1/2 in inside Ø.	0.2
LARSACC-005*		SureMotion single pillow block, open type, linear ball bushing, 3/4 in inside Ø.	0.5
LARSACC-006*		SureMotion single pillow block, open type, linear ball bushing, 1 in inside Ø.	1.0
LARSACC-010*		SureMotion linear ball bushing, open type, 1/2 in inside Ø, with seals, self-aligning.	0.1
LARSACC-011*		SureMotion linear ball bushing, open type, 3/4 in inside Ø, with seals, self-aligning.	0.1
LARSACC-012*		SureMotion linear ball bushing, open type, 1 in inside Ø, with seals, self-aligning.	0.2

* Bushings and pillow blocks are replacement components that are the same as the original components in the slide assemblies.

Round-Shaft Slide Elements

Dimensions (in [mm])



LARSA1-xxLxxC
& LARSB1-xxLxxC*

PART #	A	B	C	ØD	E	F
LARSA1-08L12C	12.0 [304.8]	2.00 [50.8]	1.70 [42.9]	0.50 [12.7]	2.00 [50.8]	1.69 [42.9]
LARSA1-08L24C	24.0 [609.6]					
LARSA1-08L36C	36.0 [914.4]					
LARSA1-12L12C	12.0 [304.8]	2.50 [63.5]	2.19 [55.6]	0.75 [19.0]	2.75 [69.9]	2.06 [52.4]
LARSA1-12L24C	24.0 [609.6]					
LARSA1-12L36C	36.0 [914.4]					
LARSA1-16L12C	12.0 [304.8]	3.06 [77.8]	2.69 [68.3]	1.00 [25.4]	3.25 [82.6]	2.81 [71.5]
LARSA1-16L24C	24.0 [609.6]					
LARSA1-16L36C	36.0 [914.4]					
LARSB1-08L12C	12.0 [304.8]	1.50 [38.1]	1.81 [46.0]	0.50 [12.7]	2.00 [50.8]	1.50 [38.1]
LARSB1-08L24C	24.0 [609.6]					
LARSB1-08L36C	36.0 [914.4]					
LARSB1-12L12C	12.0 [304.8]	1.75 [44.5]	2.44 [61.9]	0.75 [19.0]	2.75 [69.9]	1.88 [47.6]
LARSB1-12L24C	24.0 [609.6]					
LARSB1-12L36C	36.0 [914.4]					
LARSB1-16L12C	12.0 [304.8]	2.13 [54.0]	2.94 [74.6]	1.00 [25.4]	3.25 [82.6]	2.63 [66.7]
LARSB1-16L24C	24.0 [609.6]					
LARSB1-16L36C	36.0 [914.4]					

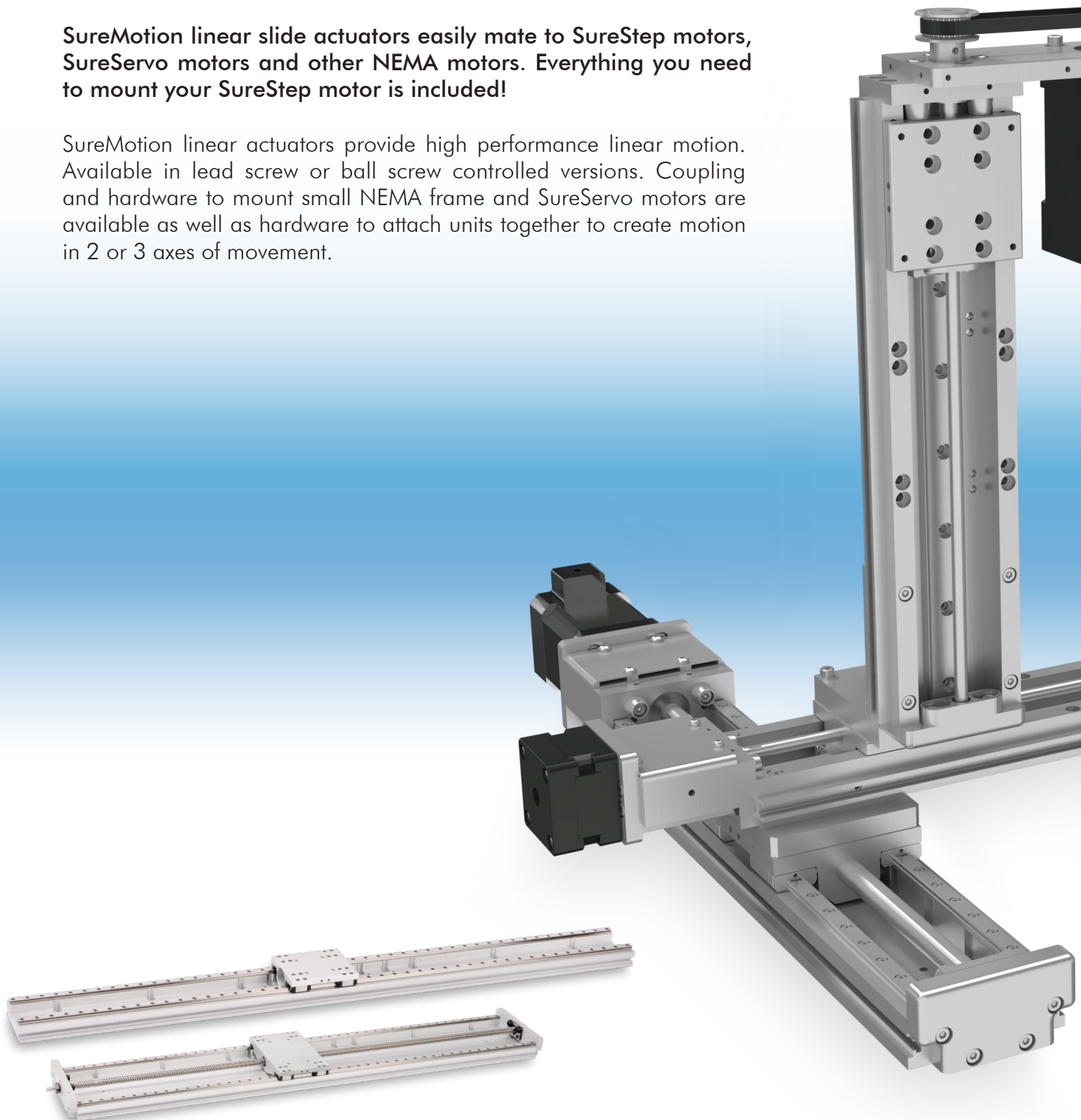
*LARSA1-xxLxxC is shown in drawing. LARSB1-xxLxxC has different appearance, but same dimensions as shown in this table.

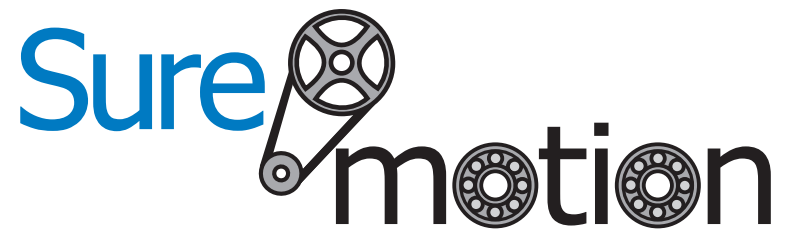
See our website [www.suremotion.com](#) for complete Engineering drawings.

Linear Motion Slides and Components to Create up to 3 Axes of Motion

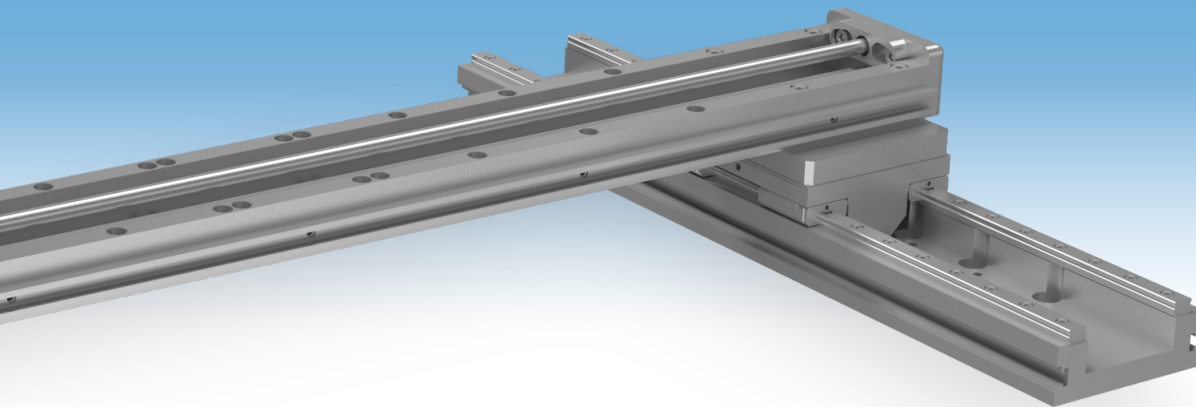
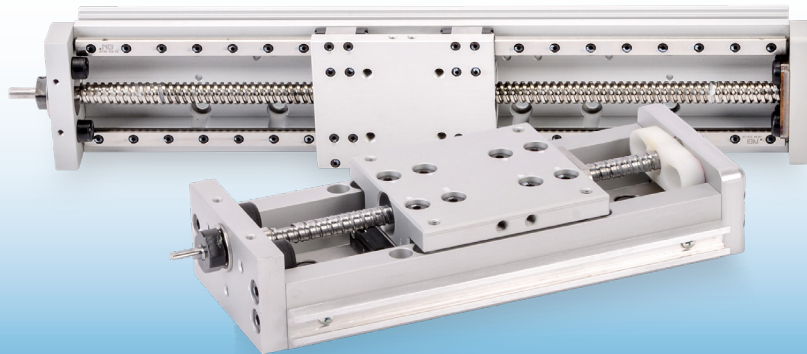
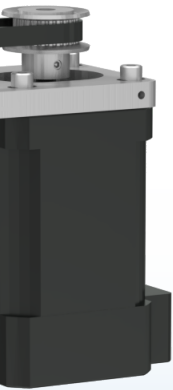
SureMotion linear slide actuators easily mate to SureStep motors, SureServo motors and other NEMA motors. Everything you need to mount your SureStep motor is included!

SureMotion linear actuators provide high performance linear motion. Available in lead screw or ball screw controlled versions. Coupling and hardware to mount small NEMA frame and SureServo motors are available as well as hardware to attach units together to create motion in 2 or 3 axes of movement.



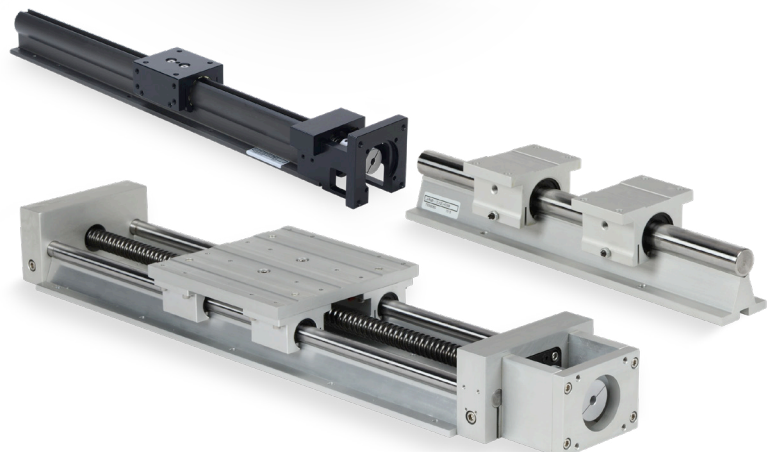


LAHP units can be attached to each other to provide up to 3 axes of motion and from 52mm to 910mm of travel.



18 models, with travels from 6 to 36 inches

Ready to mount NEMA 17, 23 or 34 motors



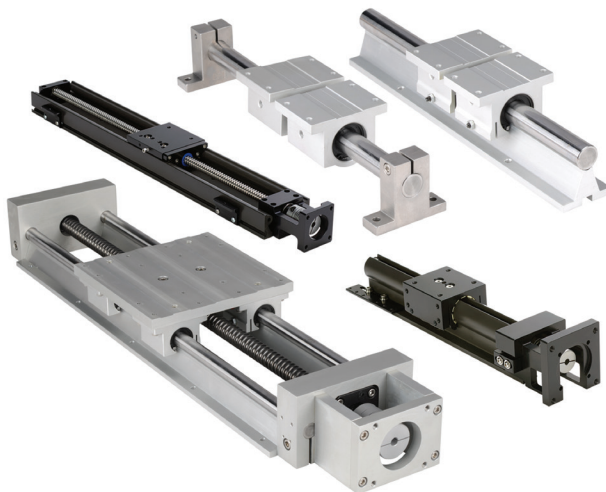
Product Overview

Actuator Overview

SureMotion linear motion offers both motor-ready actuator assemblies, and a versatile assortment of sliding components and accessories to provide a wide variety of motion control solutions.

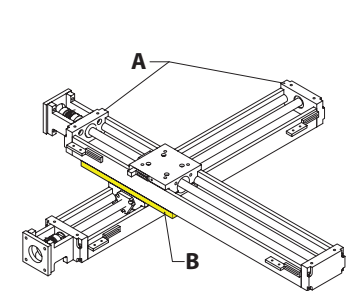
Linear Slide Actuator Comparisons

Actuator Series Comparisons						
Actuator Series	Actuator Type	Drive Type	Max Load Capacity (lb)	Max Speed (in/s)	Travel (in)	Relative Price
LARSD2	Twin Round Shaft	Ball Screw	920	6	12, 24	\$\$\$\$
LACP2	Compact Slide	Lead Screw	125	20	6, 12, 24, 36	\$\$
LAVL2	Value Slide	Lead Screw	110	15	6, 12, 18, 24	\$

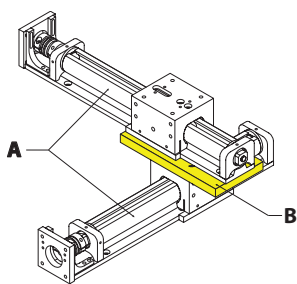


Available Multi-Axis Configurations

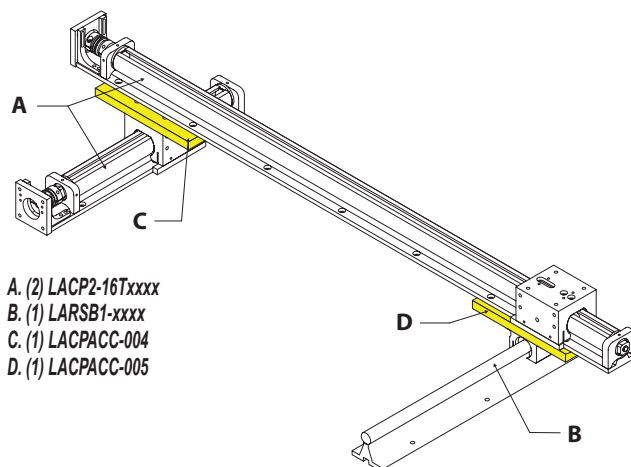
X-Y Axis Configurations



A. (2) LAVL2-60Txxxx
B. (1) LAVLACC-004

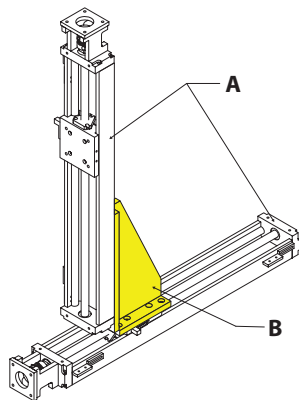


A. (2) LACP2-16Txxxx
B. (1) LACPACC-004



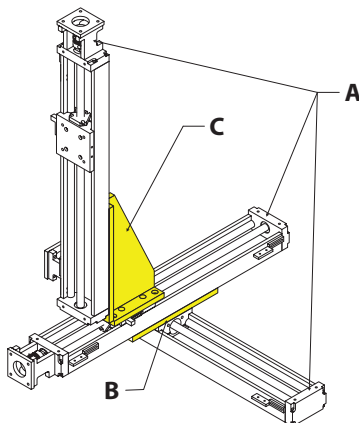
A. (2) LACP2-16Txxxx
B. (1) LARSB1-xxxx
C. (1) LACPACC-004
D. (1) LACPACC-005

X-Z Axis Configuration

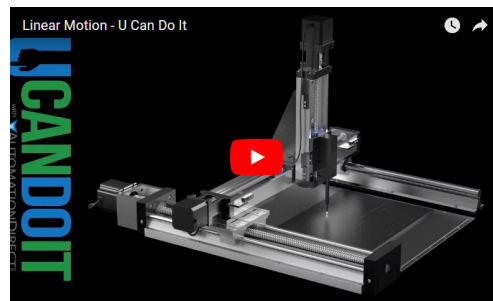


A. (2) LAVL2-60Txxxx
B. (1) LAVLACC-005

X-Y-Z Axis Configuration



A. (3) LAVL2-60Txxxx
B. (1) LAVLACC-004
C. (1) LAVLACC-005



Click on the above video link for a short visual example of how our products can be used.