

USB to RS-485 PC Adapter

USB-485M

Convenient 2-wire USB to RS-485 serial communication adapter for universal RS-485 use (GS drives, SureServo servos, Solo temperature controllers, CLICK PLCs, etc.). Does not require an external power supply or complicated configuration process.

Features:

- Type A (plug) USB connector
- Universal female RJ45/RJ12 modular connector (accepts RJ12 & RJ45 plugs)
- Supports multiple baud rates
- USB v2.0 compliant
- RoHS compliant
- CE compliant

Components Included:

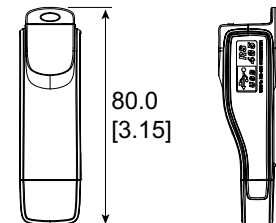
- Adapter
- Cable – 6-wire RJ12 crossover; 2m [79 in] (for plug & play connectivity to GS drives)
- Cable – 2-wire RJ12–flying leads; 2m [79in] (for universal RS-485 connectivity to SureServo, Solo, etc.)

Specifications	
Description	USB TO RS-485 PC Adapter; includes (2) RJ12 cables, mini-CD with driver, instructions
Component Compatibility *	GS series AC drives – GSOFI configuration software GS series AC drives – Modbus polling SureServo servo drives – SV-PRO configuration software** SureServo servo drives – Modbus polling** SOLO process controllers – SL-SOFT configuration software SOLO process controllers – Modbus polling CLICK PLCs – Modbus polling P3-550 PLCs – Modbus polling
Power Supply	No external power supply needed
Power Consumption	0.4W
Voltage Isolation	3000 VDC
Baud Rates Supported	75, 150, 300, 600, 1200, 2400, 4800, 9600, 19200, 38400, 57600, 115200 (bps)
Transmission Type	RS-485 half-duplex (2-wire)
LED Display	Steady Green LED ON: power is ON. Blinking orange LED: data is transmitting.
USB Connector	Type A (plug)
RS-485 Connector	RJ45
Compatibility	USB v2.0 specification
PC Compatibility	Windows Operating System required for bridge & driver installation: 32-bit driver: Windows 7, 8, 8.1, 10 64-bit driver: Windows 7, 8, 8.1, 10
* NOT compatible with DirectSOFT PLC software. (DirectSOFT RS-485 programming requires 4-wire full-duplex data transmission.)	
** Requires SVC-485CFG-CBL-2 cable.	

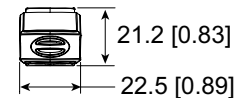
USB-485M



USB-485M Dimensions



UNITS:
mm [in]



USB-485M RJ-45 Pin-out



8 ← 1



RJ-45

Pin	Description
1	reserved
2	reserved
3	reserved
4	SG+
5	SG-
6	reserved
7	reserved
8	reserved